



[Go to Product page](#)

Datasheet for ABIN7101572

anti-PUMA antibody

6 Images

Overview

| | |
|--------------|--|
| Quantity: | 20 µL |
| Target: | PUMA (BBC3) |
| Reactivity: | Human |
| Host: | Rabbit |
| Clonality: | Monoclonal |
| Conjugate: | This PUMA antibody is un-conjugated |
| Application: | Western Blotting (WB), Immunohistochemistry (IHC), Immunofluorescence (IF) |

Product Details

| | |
|-------------------|---|
| Immunogen: | A synthesized peptide derived from human PUMA |
| Isotype: | IgG |
| Cross-Reactivity: | Human, Mouse, Rat |
| Characteristics: | Monoclonal Antibodies |
| Purification: | Affinity purification |

Target Details

| | |
|-------------------|---|
| Target: | PUMA (BBC3) |
| Alternative Name: | BBC3 (BBC3 Products) |
| Background: | This gene encodes a member of the BCL-2 family of proteins. This family member belongs to the BH3-only pro-apoptotic subclass. The protein cooperates with direct activator proteins to |

Target Details

induce mitochondrial outer membrane permeabilization and apoptosis. It can bind to anti-apoptotic Bcl-2 family members to induce mitochondrial dysfunction and caspase activation. Because of its pro-apoptotic role, this gene is a potential drug target for cancer therapy and for tissue injury. Alternative splicing results in multiple transcript variants. [provided by RefSeq, Dec 2011],JFY-1, JFY1, PUMA,Apoptosis,Apoptosis_Mitochondrial Control of Apoptosis,Cell Biology & Developmental Biology,Endocrine & Metabolism,Neurodegenerative Diseases,Neuroscience,BBC3

Molecular Weight: 18 kDa

Gene ID: 27113

UniProt: [Q96PG8](#), [Q9BXH1](#)

Pathways: [p53 Signaling](#), [Positive Regulation of Endopeptidase Activity](#)

Application Details

Application Notes: WB,1:500 - 1:2000,IHC,1:50 - 1:200,IF,1:50 - 1:200

Restrictions: For Research Use only

Handling

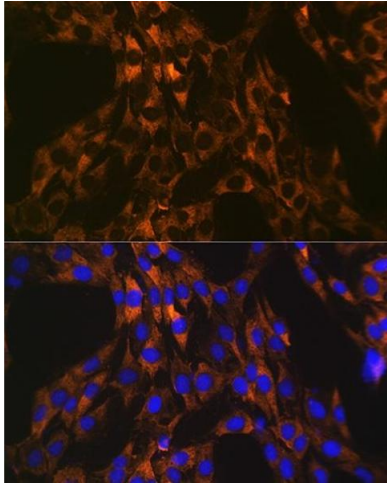
Buffer: PBS with 0.02 % sodium azide,0.05 % BSA,50 % glycerol, pH 7.3.

Preservative: Sodium azide

Precaution of Use: This product contains Sodium azide: a POISONOUS AND HAZARDOUS SUBSTANCE which should be handled by trained staff only.

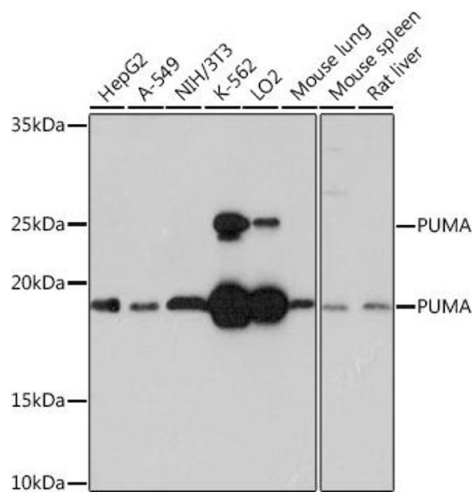
Storage: -20 °C

Storage Comment: Store at -20°C. Avoid freeze / thaw cycles.



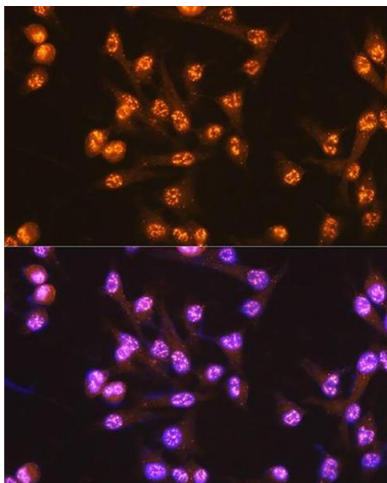
Immunofluorescence

Image 1. Immunofluorescence analysis of C6 cells using PUMA Rabbit mAb (ABIN1678790, ABIN3018050, ABIN3018051 and ABIN7101572) at dilution of 1:100 (40x lens). Blue: DAPI for nuclear staining.



Western Blotting

Image 2. Western blot analysis of extracts of various cell lines, using PUMA Rabbit mAb (ABIN1678790, ABIN3018050, ABIN3018051 and ABIN7101572) at 1:1000 dilution. Secondary antibody: HRP Goat Anti-Rabbit IgG (H+L) (ABIN1684268 and ABIN3020597) at 1:10000 dilution. Lysates/proteins: 25 µg per lane. Blocking buffer: 3 % nonfat dry milk in TBST. Detection: ECL Basic Kit (RM00020). Exposure time: 30s.



Immunofluorescence

Image 3. Immunofluorescence analysis of U-2 OS cells using PUMA Rabbit mAb (ABIN1678790, ABIN3018050, ABIN3018051 and ABIN7101572) at dilution of 1:100 (40x lens). Blue: DAPI for nuclear staining.

Please check the [product details page](#) for more images. Overall 6 images are available for ABIN7101572.