



Datasheet for ABIN7101573  
**anti-Angiopoietin 1 antibody**



[Go to Product page](#)

2 Images

### Overview

Quantity:	20 µL
Target:	Angiopoietin 1 (ANGPT1)
Reactivity:	Human
Host:	Rabbit
Clonality:	Monoclonal
Conjugate:	This Angiopoietin 1 antibody is un-conjugated
Application:	Western Blotting (WB), Immunohistochemistry (IHC)

### Product Details

Immunogen:	A synthesized peptide derived from human ANGPT1
Isotype:	IgG
Cross-Reactivity:	Human, Mouse, Rat
Characteristics:	Monoclonal Antibodies
Purification:	Affinity purification

### Target Details

Target:	Angiopoietin 1 (ANGPT1)
Alternative Name:	ANGPT1 ( <a href="#">ANGPT1 Products</a> )
Background:	This gene encodes a secreted glycoprotein that belongs to the angiopoietin family. Members of this family play important roles in vascular development and angiogenesis. All angiopoietins

## Target Details

---

bind with similar affinity to an endothelial cell-specific tyrosine-protein kinase receptor. The protein encoded by this gene is a secreted glycoprotein that activates the receptor by inducing its tyrosine phosphorylation. It plays a critical role in mediating reciprocal interactions between the endothelium and surrounding matrix and mesenchyme and inhibits endothelial permeability. The protein also contributes to blood vessel maturation and stability, and may be involved in early development of the heart. Alternative splicing results in multiple transcript variants encoding distinct isoforms. [provided by RefSeq, Sep 2015],AGP1, AGPT, ANG1,Angiogenesis,Cancer,Cardiovascular,Cell Biology & Developmental Biology,Endocrine & Metabolism,Growth factors,Hypoxia,ANGPT1

---

Molecular Weight: 57 kDa

---

Gene ID: 284

---

UniProt: [Q15389](#)

---

Pathways: [RTK Signaling](#), [Glycosaminoglycan Metabolic Process](#)

## Application Details

---

---

Application Notes: WB,1:500 - 1:2000,IHC,1:50 - 1:200

---

Restrictions: For Research Use only

## Handling

---

---

Buffer: PBS with 0.02 % sodium azide,0.05 % BSA,50 % glycerol, pH 7.3.

---

Preservative: Sodium azide

---

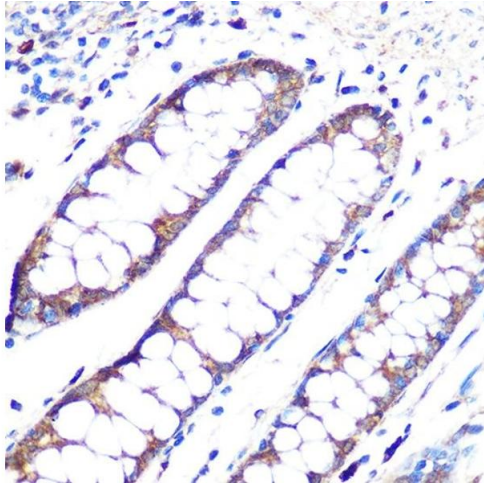
Precaution of Use: This product contains Sodium azide: a POISONOUS AND HAZARDOUS SUBSTANCE which should be handled by trained staff only.

---

Storage: -20 °C

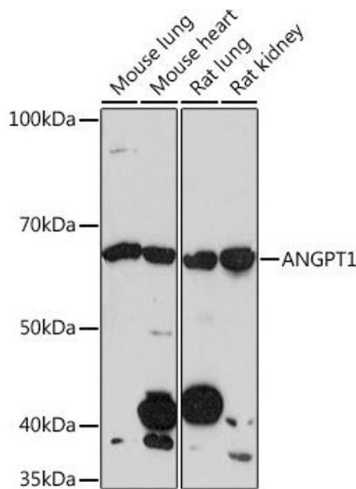
---

Storage Comment: Store at -20°C. Avoid freeze / thaw cycles.



### Immunohistochemistry

**Image 1.** Immunohistochemistry of paraffin-embedded human colon using Rabbit mAb (ABIN1678801, ABIN3018058, ABIN3018059 and ABIN7101573) at dilution of 1:100 (40x lens). Perform microwave antigen retrieval with 10 mM PBS buffer pH 7.2 before commencing with IHC staining protocol.



### Western Blotting

**Image 2.** Western blot analysis of extracts of various cell lines, using Rabbit mAb (ABIN1678801, ABIN3018058, ABIN3018059 and ABIN7101573) at 1:1000 dilution. Secondary antibody: HRP Goat Anti-Rabbit IgG (H+L) (ABIN1684268 and ABIN3020597) at 1:10000 dilution. Lysates/proteins: 25 µg per lane. Blocking buffer: 3 % nonfat dry milk in TBST. Detection: ECL Enhanced Kit (RM00021). Exposure time: 3 min.