



Datasheet for ABIN7101574
anti-IGF2R antibody



[Go to Product page](#)

4 Images

Overview

Quantity:	20 µL
Target:	IGF2R
Reactivity:	Human
Host:	Rabbit
Clonality:	Monoclonal
Conjugate:	This IGF2R antibody is un-conjugated
Application:	Western Blotting (WB), Immunofluorescence (IF)

Product Details

Immunogen:	A synthesized peptide derived from human Cation-independent Cation-independent M6PR (IGF2R) (IGF2R)
Isotype:	IgG
Cross-Reactivity:	Human, Mouse, Rat
Characteristics:	Monoclonal Antibodies
Purification:	Affinity purification

Target Details

Target:	IGF2R
Alternative Name:	IGF2R (IGF2R Products)
Background:	This gene encodes a receptor for both insulin-like growth factor 2 and mannose 6-phosphate.

Target Details

The binding sites for each ligand are located on different segments of the protein. This receptor has various functions, including in the intracellular trafficking of lysosomal enzymes, the activation of transforming growth factor beta, and the degradation of insulin-like growth factor 2. Mutation or loss of heterozygosity of this gene has been association with risk of hepatocellular carcinoma. The orthologous mouse gene is imprinted and shows exclusive expression from the maternal allele, however, imprinting of the human gene may be polymorphic, as only a minority of individuals showed biased expression from the maternal allele (PMID:8267611). [provided by RefSeq, Nov 2015],CD222, CI-M6PR, CIMPR, M6P-R, M6P/IGF2R, MPR 300, MPR1, MPR300, MPRI,CDs,Cell Intrinsic Innate Immunity Signaling Pathway,Immunology & Inflammation,Signal Transduction,IGF2R

Molecular Weight: 274 kDa

Gene ID: 3482

UniProt: [P11717](#)

Application Details

Application Notes: WB,1:500 - 1:2000,IF,1:50 - 1:200

Restrictions: For Research Use only

Handling

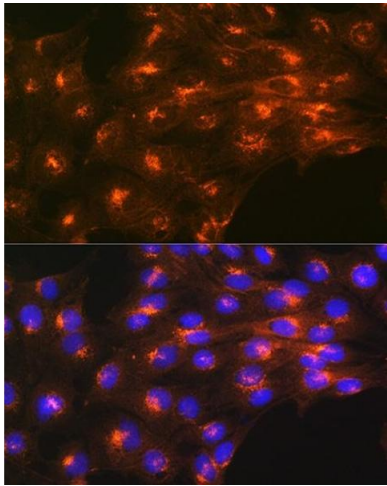
Buffer: PBS with 0.02 % sodium azide,0.05 % BSA,50 % glycerol, pH 7.3.

Preservative: Sodium azide

Precaution of Use: This product contains Sodium azide: a POISONOUS AND HAZARDOUS SUBSTANCE which should be handled by trained staff only.

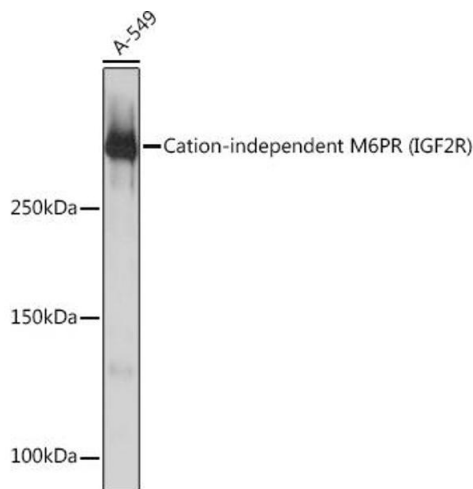
Storage: -20 °C

Storage Comment: Store at -20°C. Avoid freeze / thaw cycles.



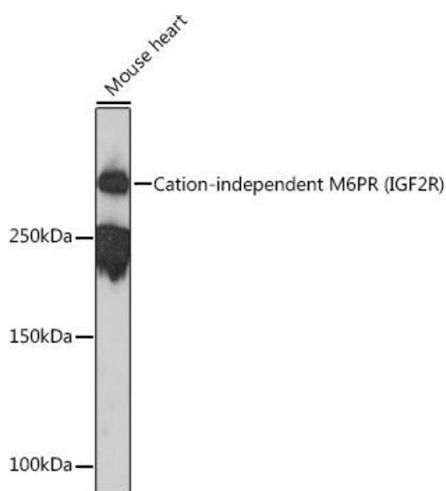
Immunofluorescence

Image 1. Immunofluorescence analysis of C6 cells using Cation-independent M6PR (IGF2R) Rabbit mAb (ABIN1678848, ABIN3018066, ABIN3018067 and ABIN7101574) at dilution of 1:100 (40x lens). Blue: DAPI for nuclear staining.



Western Blotting

Image 2. Western blot analysis of extracts of A-549 cells, using Cation-independent M6PR (IGF2R) Rabbit mAb (ABIN1678848, ABIN3018066, ABIN3018067 and ABIN7101574) at 1:1000 dilution. Secondary antibody: HRP Goat Anti-Rabbit IgG (H+L) (ABIN1684268 and ABIN3020597) at 1:10000 dilution. Lysates/proteins: 25 µg per lane. Blocking buffer: 3 % nonfat dry milk in TBST. Detection: ECL Basic Kit (RM00020). Exposure time: 90s.



Western Blotting

Image 3. Western blot analysis of extracts of Mouse heart, using Cation-independent M6PR (IGF2R) Rabbit mAb (ABIN1678848, ABIN3018066, ABIN3018067 and ABIN7101574) at 1:1000 dilution. Secondary antibody: HRP Goat Anti-Rabbit IgG (H+L) (ABIN1684268 and ABIN3020597) at 1:10000 dilution. Lysates/proteins: 25 µg per lane. Blocking buffer: 3 % nonfat dry milk in TBST. Detection: ECL Enhanced Kit (RM00021). Exposure time: 3 min.

Please check the [product details page](#) for more images. Overall 4 images are available for ABIN7101574.