



[Go to Product page](#)

Datasheet for ABIN7101576  
**anti-GNB2L1 antibody**

2 Images

### Overview

Quantity:	20 µL
Target:	GNB2L1
Reactivity:	Human
Host:	Rabbit
Clonality:	Monoclonal
Conjugate:	This GNB2L1 antibody is un-conjugated
Application:	Western Blotting (WB)

### Product Details

Immunogen:	A synthesized peptide derived from human RACK1
Isotype:	IgG
Cross-Reactivity:	Human, Mouse, Rat
Characteristics:	Monoclonal Antibodies
Purification:	Affinity purification

### Target Details

Target:	GNB2L1
Alternative Name:	RACK1 ( <a href="#">GNB2L1 Products</a> )
Background:	GNB2L1, Gnb2-rs1, H12.3, HLC-7, PIG21, Cell Biology & Developmental Biology, Cell Cycle, Epigenetics & Nuclear Signaling, G protein signaling, G protein signaling_G-Protein-Coupled

## Target Details

Receptors Signaling to MAPK/Erk,Kinase,MAPK-Erk Signaling Pathway,RNA Binding,Signal Transduction,RACK1

Molecular Weight: 35 kDa

Gene ID: 10399

UniProt: [P63244](#)

Pathways: [cAMP Metabolic Process](#), [Positive Regulation of Endopeptidase Activity](#)

## Application Details

Application Notes: WB,1:500 - 1:2000

Restrictions: For Research Use only

## Handling

Buffer: PBS with 0.02 % sodium azide,0.05 % BSA,50 % glycerol, pH 7.3.

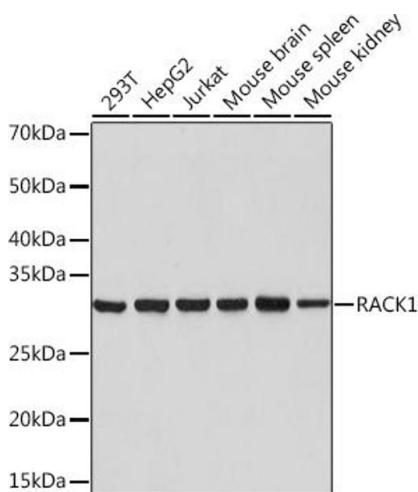
Preservative: Sodium azide

Precaution of Use: This product contains Sodium azide: a POISONOUS AND HAZARDOUS SUBSTANCE which should be handled by trained staff only.

Storage: -20 °C

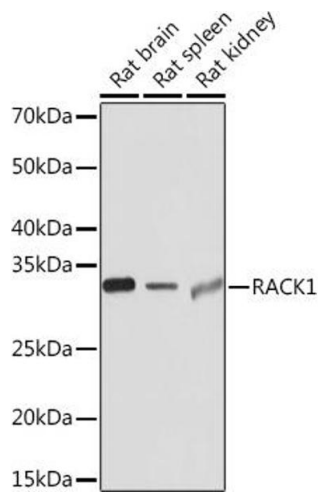
Storage Comment: Store at -20°C. Avoid freeze / thaw cycles.

## Images



### Western Blotting

**Image 1.** Western blot analysis of extracts of various cell lines, using R Rabbit mAb (ABIN1679360, ABIN3018118, ABIN3018119 and ABIN7101576) at 1:1000 dilution. Secondary antibody: HRP Goat Anti-Rabbit IgG (H+L) (ABIN1684268 and ABIN3020597) at 1:10000 dilution. Lysates/proteins: 25 µg per lane. Blocking buffer: 3 % nonfat dry milk in TBST. Detection: ECL Basic Kit (RM00020). Exposure time: 1s.



### Western Blotting

**Image 2.** Western blot analysis of extracts of various cell lines, using R Rabbit mAb (ABIN1679360, ABIN3018118, ABIN3018119 and ABIN7101576) at 1:1000 dilution. Secondary antibody: HRP Goat Anti-Rabbit IgG (H+L) (ABIN1684268 and ABIN3020597) at 1:10000 dilution. Lysates/proteins: 25 µg per lane. Blocking buffer: 3 % nonfat dry milk in TBST. Detection: ECL Basic Kit (RM00020). Exposure time: 10s.