



Datasheet for ABIN7101577
anti-XPO5 antibody



[Go to Product page](#)

3 Images

Overview

Quantity:	20 µL
Target:	XPO5
Reactivity:	Human
Host:	Rabbit
Clonality:	Monoclonal
Conjugate:	This XPO5 antibody is un-conjugated
Application:	Western Blotting (WB), Immunohistochemistry (IHC)

Product Details

Immunogen:	A synthesized peptide derived from human Exportin 5 (XPO5) (XPO5)
Isotype:	IgG
Cross-Reactivity:	Human, Mouse, Rat
Characteristics:	Monoclonal Antibodies
Purification:	Affinity purification

Target Details

Target:	XPO5
Alternative Name:	XPO5 (XPO5 Products)
Background:	This gene encodes a member of the karyopherin family that is required for the transport of small RNAs and double-stranded RNA-binding proteins from the nucleus to the cytoplasm. The

Target Details

encoded protein translocates cargo through the nuclear pore complex in a RanGTP-dependent process. [provided by RefSeq, Aug 2011],exp5,Epigenetics & Nuclear Signaling,Nuclear Receptor Signaling,RNA Binding,Signal Transduction,XPO5

Molecular Weight: 136 kDa

Gene ID: 57510

UniProt: [Q9HAV4](#)

Pathways: [Regulatory RNA Pathways](#), [Protein targeting to Nucleus](#)

Application Details

Application Notes: WB,1:500 - 1:2000, IHC,1:50 - 1:200

Restrictions: For Research Use only

Handling

Buffer: PBS with 0.02 % sodium azide,0.05 % BSA,50 % glycerol, pH 7.3.

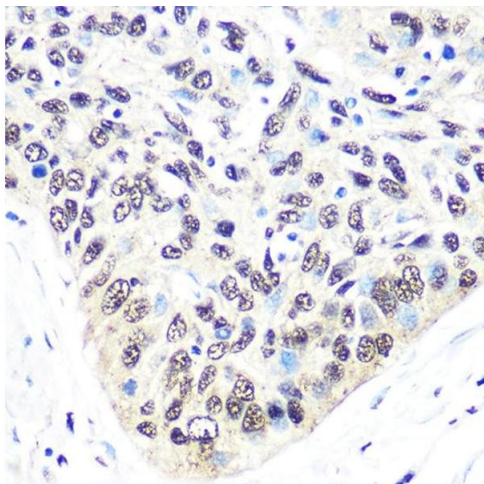
Preservative: Sodium azide

Precaution of Use: This product contains Sodium azide: a POISONOUS AND HAZARDOUS SUBSTANCE which should be handled by trained staff only.

Storage: -20 °C

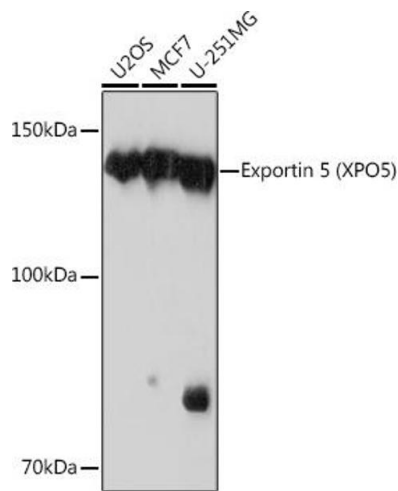
Storage Comment: Store at -20°C. Avoid freeze / thaw cycles.

Images



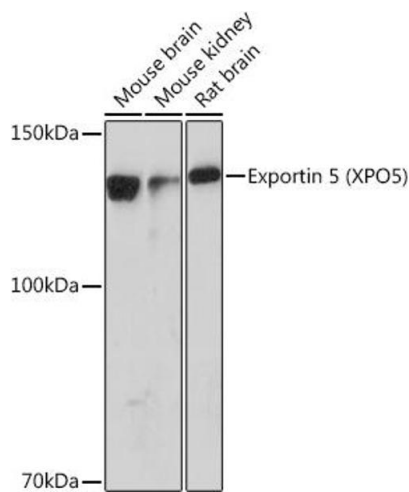
Immunohistochemistry

Image 1. Immunohistochemistry of paraffin-embedded human esophageal cancer using Exportin 5 (XPO5) (XPO5) Rabbit mAb (ABIN1682763, ABIN3018126, ABIN3018127 and ABIN7101577) at dilution of 1:100 (40x lens). Perform microwave antigen retrieval with 10 mM PBS buffer pH 7.2 before commencing with IHC staining protocol.



Western Blotting

Image 2. Western blot analysis of extracts of various cell lines, using Exportin 5 (XPO5) (XPO5) Rabbit mAb (ABIN1682763, ABIN3018126, ABIN3018127 and ABIN7101577) at 1:1000 dilution. Secondary antibody: HRP Goat Anti-Rabbit IgG (H+L) (ABIN1684268 and ABIN3020597) at 1:10000 dilution. Lysates/proteins: 25 µg per lane. Blocking buffer: 3% nonfat dry milk in TBST. Detection: ECL Basic Kit (RM00020). Exposure time: 30s.



Western Blotting

Image 3. Western blot analysis of extracts of various cell lines, using Exportin 5 (XPO5) (XPO5) Rabbit mAb (ABIN1682763, ABIN3018126, ABIN3018127 and ABIN7101577) at 1:1000 dilution. Secondary antibody: HRP Goat Anti-Rabbit IgG (H+L) (ABIN1684268 and ABIN3020597) at 1:10000 dilution. Lysates/proteins: 25 µg per lane. Blocking buffer: 3% nonfat dry milk in TBST. Detection: ECL Basic Kit (RM00020). Exposure time: 90s.