



Datasheet for ABIN7101578
anti-SMARCE1 antibody



[Go to Product page](#)

4 Images

Overview

Quantity:	20 µL
Target:	SMARCE1
Reactivity:	Human
Host:	Rabbit
Clonality:	Monoclonal
Conjugate:	This SMARCE1 antibody is un-conjugated
Application:	Western Blotting (WB), Immunofluorescence (IF)

Product Details

Immunogen:	A synthesized peptide derived from human BAF57/SMARCE1
Isotype:	IgG
Cross-Reactivity:	Human, Mouse, Rat
Characteristics:	Monoclonal Antibodies
Purification:	Affinity purification

Target Details

Target:	SMARCE1
Alternative Name:	SMARCE1 (SMARCE1 Products)
Background:	The protein encoded by this gene is part of the large ATP-dependent chromatin remodeling complex SWI/SNF, which is required for transcriptional activation of genes normally repressed

Target Details

by chromatin. The encoded protein, either alone or when in the SWI/SNF complex, can bind to 4-way junction DNA, which is thought to mimic the topology of DNA as it enters or exits the nucleosome. The protein contains a DNA-binding HMG domain, but disruption of this domain does not abolish the DNA-binding or nucleosome-displacement activities of the SWI/SNF complex. Unlike most of the SWI/SNF complex proteins, this protein has no yeast counterpart. [provided by RefSeq, Jul 2008],BAF57, CSS5,Chromatin Remodeling,Epigenetics & Nuclear Signaling,SMARCE1

Molecular Weight: 57 kDa

Gene ID: 6605

UniProt: [Q969G3](#)

Pathways: [Chromatin Binding](#)

Application Details

Application Notes: WB,1:500 - 1:2000, IF,1:50 - 1:200

Restrictions: For Research Use only

Handling

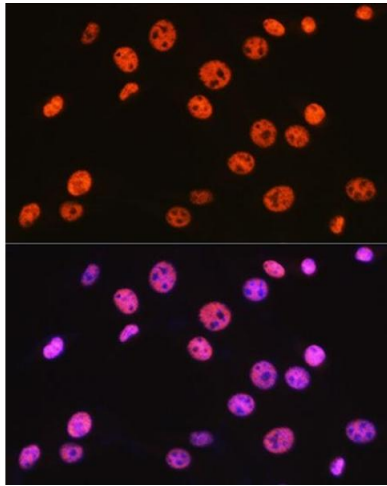
Buffer: PBS with 0.02 % sodium azide,0.05 % BSA,50 % glycerol, pH 7.3.

Preservative: Sodium azide

Precaution of Use: This product contains Sodium azide: a POISONOUS AND HAZARDOUS SUBSTANCE which should be handled by trained staff only.

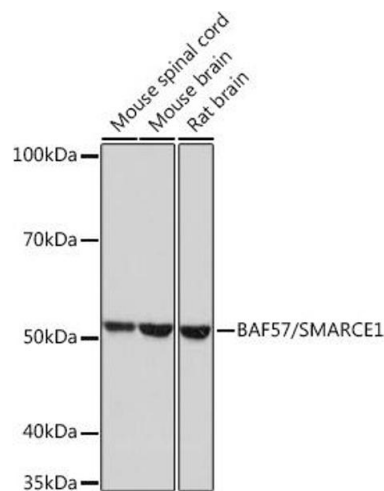
Storage: -20 °C

Storage Comment: Store at -20°C. Avoid freeze / thaw cycles.



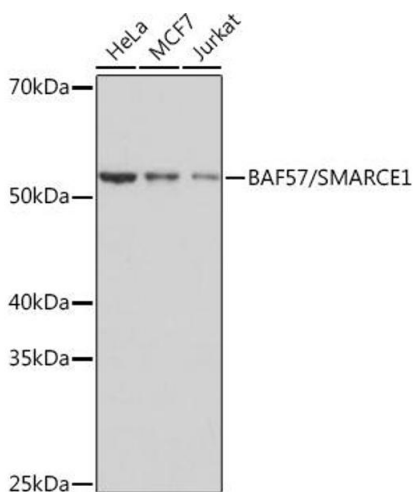
Immunofluorescence

Image 1. Immunofluorescence analysis of NIH-3T3 cells using B/SM Rabbit mAb (ABIN1679391, ABIN3018128, ABIN3018129 and ABIN7101578) at dilution of 1:100 (40x lens). Blue: DAPI for nuclear staining.



Western Blotting

Image 2. Western blot analysis of extracts of various cell lines, using B/SM Rabbit mAb (ABIN1679391, ABIN3018128, ABIN3018129 and ABIN7101578) at 1:1000 dilution. Secondary antibody: HRP Goat Anti-Rabbit IgG (H+L) (ABIN1684268 and ABIN3020597) at 1:10000 dilution. Lysates/proteins: 25 µg per lane. Blocking buffer: 3 % nonfat dry milk in TBST. Detection: ECL Basic Kit (RM00020). Exposure time: 30s.



Western Blotting

Image 3. Western blot analysis of extracts of various cell lines, using B/SM Rabbit mAb (ABIN1679391, ABIN3018128, ABIN3018129 and ABIN7101578) at 1:1000 dilution. Secondary antibody: HRP Goat Anti-Rabbit IgG (H+L) (ABIN1684268 and ABIN3020597) at 1:10000 dilution. Lysates/proteins: 25 µg per lane. Blocking buffer: 3 % nonfat dry milk in TBST. Detection: ECL Basic Kit (RM00020). Exposure time: 1s.

Please check the [product details page](#) for more images. Overall 4 images are available for ABIN7101578.