



Datasheet for ABIN7101585  
**anti-KHDRBS1 antibody**



[Go to Product page](#)

7 Images

### Overview

|              |  |
|--------------|--|
| Quantity:    | 20 µL  |
| Target:      | KHDRBS1  |
| Reactivity:  | Human  |
| Host:        | Rabbit   |
| Clonality:   | Monoclonal   |
| Conjugate:   | This KHDRBS1 antibody is un-conjugated                                     |
| Application: | Western Blotting (WB), Immunohistochemistry (IHC), Immunofluorescence (IF) |

### Product Details

|                   |  |
|-------------------|--|
| Immunogen:        | A synthesized peptide derived from human KHDRBS1/KHDRBS1/Sam68 |
| Isotype:          | IgG  |
| Cross-Reactivity: | Human, Mouse, Rat  |
| Characteristics:  | Monoclonal Antibodies  |
| Purification:     | Affinity purification  |

### Target Details

|                   |  |
|-------------------|--|
| Target:           | KHDRBS1  |
| Alternative Name: | KHDRBS1 ( <a href="#">KHDRBS1 Products</a> )   |
| Background:       | This gene encodes a member of the K homology domain-containing, RNA-binding, signal transduction-associated protein family. The encoded protein appears to have many functions |

## Target Details

---

and may be involved in a variety of cellular processes, including alternative splicing, cell cycle regulation, RNA 3'-end formation, tumorigenesis, and regulation of human immunodeficiency virus gene expression. Alternative splicing results in multiple transcript variants. [provided by RefSeq, Dec 2012],Sam68, p62, p68,Epigenetics & Nuclear Signaling,RNA Binding,Signal Transduction,KHDRBS1

---

Molecular Weight: 68 kDa

---

Gene ID: 10657

---

UniProt: [Q07666](#)

---

Pathways: [NF-kappaB Signaling](#), [Neurotrophin Signaling Pathway](#), [Autophagy](#)

## Application Details

---

---

Application Notes: WB,1:500 - 1:2000, IHC,1:50 - 1:200, IF,1:50 - 1:200

---

Restrictions: For Research Use only

## Handling

---

---

Buffer: PBS with 0.02 % sodium azide,0.05 % BSA,50 % glycerol, pH 7.3.

---

Preservative: Sodium azide

---

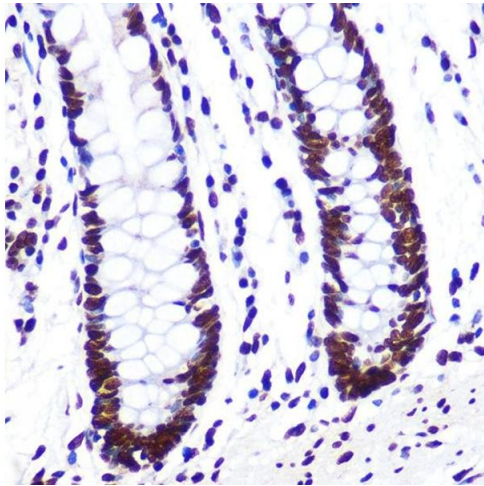
Precaution of Use: This product contains Sodium azide: a POISONOUS AND HAZARDOUS SUBSTANCE which should be handled by trained staff only.

---

Storage: -20 °C

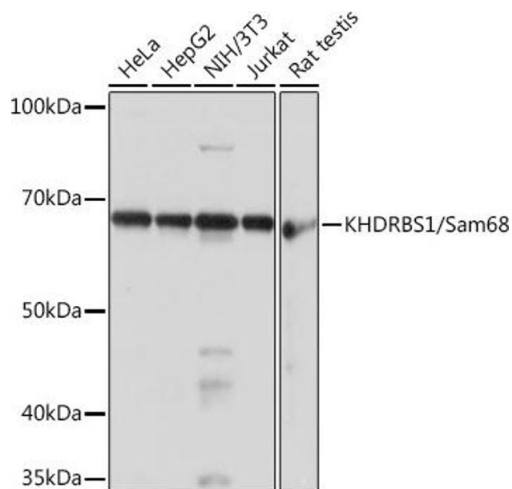
---

Storage Comment: Store at -20°C. Avoid freeze / thaw cycles.



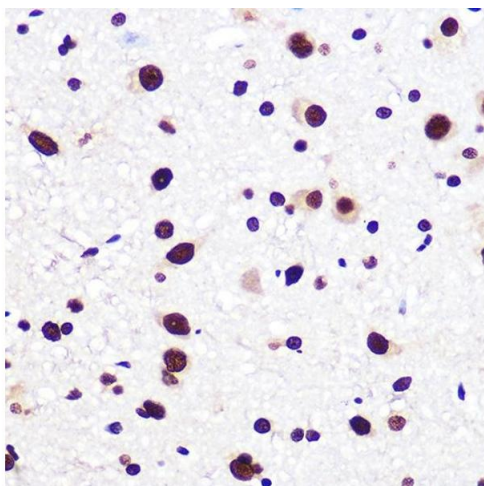
### Immunohistochemistry

**Image 1.** Immunohistochemistry of paraffin-embedded human colon using KHDRBS1/KHDRBS1/Sam68 Rabbit mAb (ABIN1680037, ABIN3018237, ABIN3018238 and ABIN7101585) at dilution of 1:100 (40x lens). Perform microwave antigen retrieval with 10 mM PBS buffer pH 7.2 before commencing with IHC staining protocol.



### Western Blotting

**Image 2.** Western blot analysis of extracts of various cell lines, using KHDRBS1/KHDRBS1/Sam68 Rabbit mAb (ABIN1680037, ABIN3018237, ABIN3018238 and ABIN7101585) at 1:1000 dilution. Secondary antibody: HRP Goat Anti-Rabbit IgG (H+L) (ABIN1684268 and ABIN3020597) at 1:10000 dilution. Lysates/proteins: 25 µg per lane. Blocking buffer: 3% nonfat dry milk in TBST. Detection: ECL Basic Kit (RM00020). Exposure time: 1s.



### Immunohistochemistry

**Image 3.** Immunohistochemistry of paraffin-embedded rat brain using KHDRBS1/KHDRBS1/Sam68 Rabbit mAb (ABIN1680037, ABIN3018237, ABIN3018238 and ABIN7101585) at dilution of 1:100 (40x lens). Perform microwave antigen retrieval with 10 mM PBS buffer pH 7.2 before commencing with IHC staining protocol.

Please check the [product details page](#) for more images. Overall 7 images are available for ABIN7101585.