



Datasheet for ABIN7101586

anti-DKK3 antibody



[Go to Product page](#)

2 Images

Overview

Quantity:	20 µL
Target:	DKK3
Reactivity:	Human
Host:	Rabbit
Clonality:	Monoclonal
Conjugate:	This DKK3 antibody is un-conjugated
Application:	Western Blotting (WB), Immunofluorescence (IF)

Product Details

Immunogen:	A synthesized peptide derived from human DKK3
Isotype:	IgG
Cross-Reactivity:	Human, Mouse, Rat
Characteristics:	Monoclonal Antibodies
Purification:	Affinity purification

Target Details

Target:	DKK3
Abstract:	DKK3 Products
Background:	This gene encodes a protein that is a member of the dickkopf family. The secreted protein contains two cysteine rich regions and is involved in embryonic development through its

Target Details

interactions with the Wnt signaling pathway. The expression of this gene is decreased in a variety of cancer cell lines and it may function as a tumor suppressor gene. Alternative splicing results in multiple transcript variants encoding the same protein. [provided by RefSeq, Jul 2008],REIC, RIG,Cell Biology & Developmental Biology,Signal Transduction,Stem Cells,Wnt/ β -Catenin Signaling Pathway,DKK3

Molecular Weight: 60 kDa

Gene ID: 27122

UniProt: [Q9UBP4](#)

Application Details

Application Notes: WB,1:500 - 1:2000, IF,1:50 - 1:200

Restrictions: For Research Use only

Handling

Buffer: PBS with 0.02 % sodium azide,0.05 % BSA,50 % glycerol, pH 7.3.

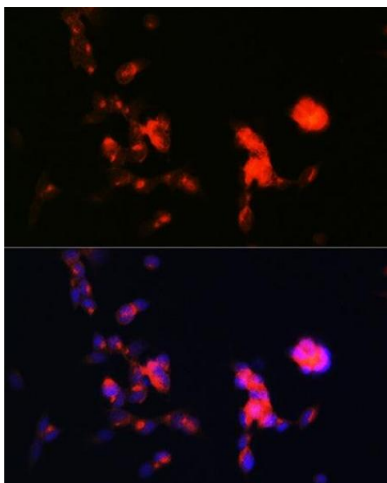
Preservative: Sodium azide

Precaution of Use: This product contains Sodium azide: a POISONOUS AND HAZARDOUS SUBSTANCE which should be handled by trained staff only.

Storage: -20 °C

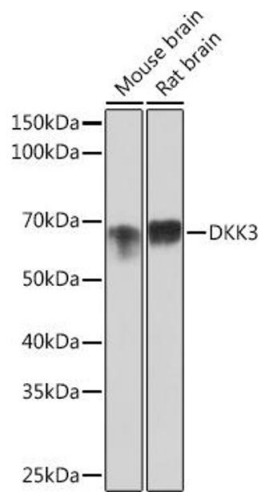
Storage Comment: Store at -20°C. Avoid freeze / thaw cycles.

Images



Immunofluorescence

Image 1. Immunofluorescence analysis of SH-SY5Y cells using DKK3 Rabbit mAb (ABIN1680063, ABIN3018243, ABIN3018244 and ABIN7101586) at dilution of 1:100 (40x lens). Blue: DAPI for nuclear staining.



Western Blotting

Image 2. Western blot analysis of extracts of various cell lines, using DKK3 Rabbit mAb (ABIN1680063, ABIN3018243, ABIN3018244 and ABIN7101586) at 1:1000 dilution. Secondary antibody: HRP Goat Anti-Rabbit IgG (H+L) (ABIN1684268 and ABIN3020597) at 1:10000 dilution. Lysates/proteins: 25 µg per lane. Blocking buffer: 3 % nonfat dry milk in TBST. Detection: ECL Basic Kit (RM00020). Exposure time: 60s.