

Datasheet for ABIN7101588  
**anti-ODC1 antibody**



[Go to Product page](#)

1 Image

## Overview

Quantity:	20 µL
Target:	ODC1
Reactivity:	Human
Host:	Rabbit
Clonality:	Monoclonal
Conjugate:	This ODC1 antibody is un-conjugated
Application:	Western Blotting (WB)

## Product Details

Immunogen:	A synthesized peptide derived from human ODC1
Isotype:	IgG
Cross-Reactivity:	Human
Characteristics:	Monoclonal Antibodies
Purification:	Affinity purification

## Target Details

Target:	ODC1
Alternative Name:	ODC1 ( <a href="#">ODC1 Products</a> )
Background:	This gene encodes the rate-limiting enzyme of the polyamine biosynthesis pathway which catalyzes ornithine to putrescine. The activity level for the enzyme varies in response to growth-

## Target Details

---

promoting stimuli and exhibits a high turnover rate in comparison to other mammalian proteins. Originally localized to both chromosomes 2 and 7, the gene encoding this enzyme has been determined to be located on 2p25, with a pseudogene located on 7q31-qter. Multiple alternatively spliced transcript variants encoding distinct isoforms have been identified.

[provided by RefSeq, Dec 2013],ODC,Amino acid metabolism,Cancer,Endocrine & Metabolism,Signal Transduction,ODC1

---

Molecular Weight:	51 kDa
-------------------	--------

---

Gene ID:	4953
----------	------

---

UniProt:	<a href="#">P11926</a>
----------	------------------------

## Application Details

---

---

Application Notes:	WB,1:500 - 1:2000
--------------------	-------------------

---

Restrictions:	For Research Use only
---------------	-----------------------

## Handling

---

---

Buffer:	PBS with 0.02 % sodium azide,0.05 % BSA,50 % glycerol, pH 7.3.
---------	--

---

Preservative:	Sodium azide
---------------	--------------

---

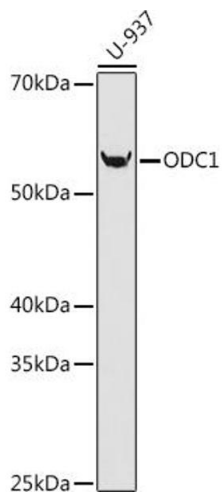
Precaution of Use:	This product contains Sodium azide: a POISONOUS AND HAZARDOUS SUBSTANCE which should be handled by trained staff only.
--------------------	--

---

Storage:	-20 °C
----------	--------

---

Storage Comment:	Store at -20°C. Avoid freeze / thaw cycles.
------------------	---



### Western Blotting

**Image 1.** Western blot analysis of extracts of U-937 cells, using ODC1 antibody (ABIN1680080, ABIN3018249, ABIN3018250 and ABIN7101588) at 1:1000 dilution. Secondary antibody: HRP Goat Anti-Rabbit IgG (H+L) (ABIN1684268 and ABIN3020597) at 1:10000 dilution. Lysates/proteins: 25 µg per lane. Blocking buffer: 3 % nonfat dry milk in TBST. Detection: ECL Basic Kit (RM00020). Exposure time: 90s.