



[Go to Product page](#)

Datasheet for ABIN7101598

anti-G3BP1 antibody

4 Images

Overview

Quantity:	20 µL
Target:	G3BP1
Reactivity:	Human
Host:	Rabbit
Clonality:	Monoclonal
Conjugate:	This G3BP1 antibody is un-conjugated
Application:	Western Blotting (WB), Immunofluorescence (IF), Immunoprecipitation (IP)

Product Details

Immunogen:	A synthesized peptide derived from human G3BP11
Isotype:	IgG
Cross-Reactivity:	Human, Mouse, Rat
Characteristics:	Monoclonal Antibodies
Purification:	Affinity purification

Target Details

Target:	G3BP1
Alternative Name:	G3BP1 (G3BP1 Products)
Background:	This gene encodes one of the DNA-unwinding enzymes which prefers partially unwound 3'-tailed substrates and can also unwind partial RNA/DNA and RNA/RNA duplexes in an ATP-

Target Details

dependent fashion. This enzyme is a member of the heterogeneous nuclear RNA-binding proteins and is also an element of the Ras signal transduction pathway. It binds specifically to the Ras-GTPase-activating protein by associating with its SH3 domain. Several alternatively spliced transcript variants of this gene have been described, but the full-length nature of some of these variants has not been determined. [provided by RefSeq, Jul 2008],G3BP, HDH-VIII,Epigenetics & Nuclear Signaling,RNA Binding,G3BP1

Molecular Weight: 68 kDa

Gene ID: 10146

UniProt: [Q13283](#)

Pathways: [SARS-CoV-2 Protein Interactome](#)

Application Details

Application Notes: WB,1:500 - 1:2000,IF,1:50 - 1:200,IP,1:50 - 1:200

Restrictions: For Research Use only

Handling

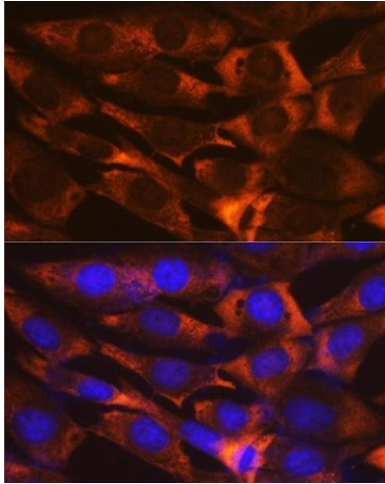
Buffer: PBS with 0.02 % sodium azide,0.05 % BSA,50 % glycerol, pH 7.3.

Preservative: Sodium azide

Precaution of Use: This product contains Sodium azide: a POISONOUS AND HAZARDOUS SUBSTANCE which should be handled by trained staff only.

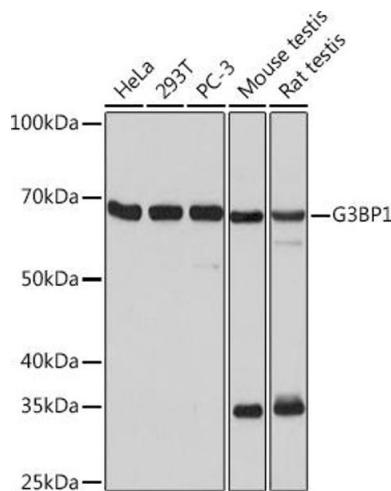
Storage: -20 °C

Storage Comment: Store at -20°C. Avoid freeze / thaw cycles.



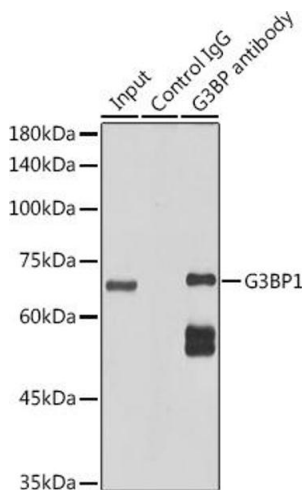
Immunofluorescence

Image 1. Immunofluorescence analysis of NIH-3T3 cells using G3BP11 Rabbit mAb (ABIN1683144, ABIN7101598, ABIN7101599 and ABIN7101600) at dilution of 1:100 (40x lens). Blue: DAPI for nuclear staining.



Western Blotting

Image 2. Western blot analysis of extracts of various cell lines, using G3BP11 Rabbit mAb (ABIN1683144, ABIN7101598, ABIN7101599 and ABIN7101600) at 1:1000 dilution. Secondary antibody: HRP Goat Anti-Rabbit IgG (H+L) (ABIN1684268 and ABIN3020597) at 1:10000 dilution. Lysates/proteins: 25 µg per lane. Blocking buffer: 3 % nonfat dry milk in TBST. Detection: ECL Basic Kit (RM00020). Exposure time: 10s.



Immunoprecipitation

Image 3. Immunoprecipitation analysis of 300 µg extracts of HeLa cells using 3 µg G3BP11 antibody (ABIN1683144, ABIN7101598, ABIN7101599 and ABIN7101600). Western blot was performed from the immunoprecipitate using G3BP11 antibody (ABIN1683144, ABIN7101598, ABIN7101599 and ABIN7101600) at a dilution of 1:1000.

Please check the [product details page](#) for more images. Overall 4 images are available for ABIN7101598.