

Datasheet for ABIN7101602
anti-NR1H3 antibody



[Go to Product page](#)

7 Images

Overview

Quantity:	20 µL
Target:	NR1H3
Reactivity:	Human
Host:	Rabbit
Clonality:	Monoclonal
Conjugate:	This NR1H3 antibody is un-conjugated
Application:	Western Blotting (WB), Immunohistochemistry (IHC), Immunofluorescence (IF)

Product Details

Immunogen:	A synthesized peptide derived from human LXRalpha
Isotype:	IgG
Cross-Reactivity:	Human, Mouse, Rat
Characteristics:	Monoclonal Antibodies
Purification:	Affinity purification

Target Details

Target:	NR1H3
Alternative Name:	NR1H3 (NR1H3 Products)
Background:	The protein encoded by this gene belongs to the NR1 subfamily of the nuclear receptor superfamily. The NR1 family members are key regulators of macrophage function, controlling

Target Details

transcriptional programs involved in lipid homeostasis and inflammation. This protein is highly expressed in visceral organs, including liver, kidney and intestine. It forms a heterodimer with retinoid X receptor (RXR), and regulates expression of target genes containing retinoid response elements. Studies in mice lacking this gene suggest that it may play an important role in the regulation of cholesterol homeostasis. Alternatively spliced transcript variants encoding different isoforms have been found for this gene. [provided by RefSeq, Oct 2011],LXR-a, LXRA, RLD-1,Cancer,Cardiovascular,Endocrine & Metabolism,Epigenetics & Nuclear Signaling,Lipid Metabolism,Lipid Metabolism_Cholesterol Metabolism,Lipids,Nuclear Receptor Signaling,Signal Transduction,Transcription Factors,NR1H3

Molecular Weight: 50 kDa

Gene ID: 10062

UniProt: [Q13133](#)

Pathways: [Nuclear Receptor Transcription Pathway](#), [Steroid Hormone Mediated Signaling Pathway](#), [Nuclear Hormone Receptor Binding](#), [Cellular Response to Molecule of Bacterial Origin](#), [Hepatitis C](#)

Application Details

Application Notes: WB,1:500 - 1:2000,IHC,1:50 - 1:200,IF,1:50 - 1:200

Restrictions: For Research Use only

Handling

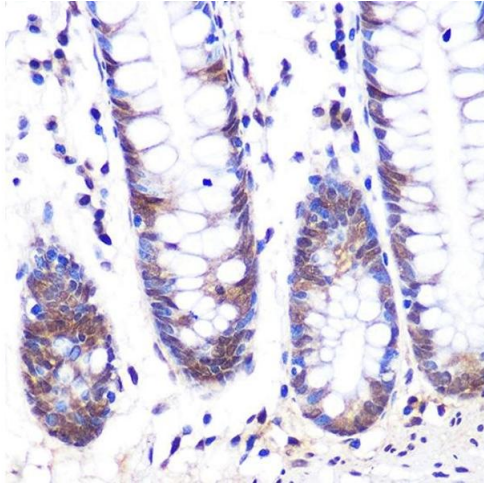
Buffer: PBS with 0.02 % sodium azide,0.05 % BSA,50 % glycerol, pH 7.3.

Preservative: Sodium azide

Precaution of Use: This product contains Sodium azide: a POISONOUS AND HAZARDOUS SUBSTANCE which should be handled by trained staff only.

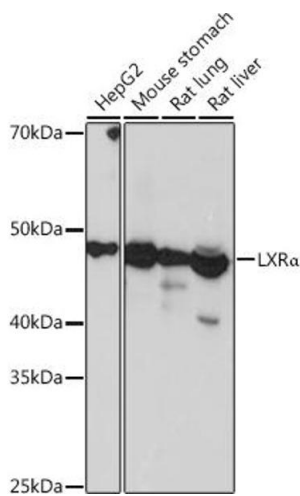
Storage: -20 °C

Storage Comment: Store at -20°C. Avoid freeze / thaw cycles.



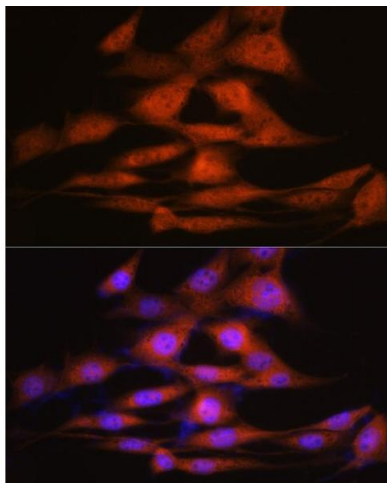
Immunohistochemistry

Image 1. Immunohistochemistry of paraffin-embedded human colon using LXRα Rabbit mAb (ABIN1679005, ABIN3018365, ABIN3018366 and ABIN7101602) at dilution of 1:100 (40x lens). Perform microwave antigen retrieval with 10 mM PBS buffer pH 7.2 before commencing with IHC staining protocol.



Western Blotting

Image 2. Western blot analysis of extracts of various cell lines, using LXRα Rabbit mAb (ABIN1679005, ABIN3018365, ABIN3018366 and ABIN7101602) at 1:1000 dilution. Secondary antibody: HRP Goat Anti-Rabbit IgG (H+L) (ABIN1684268 and ABIN3020597) at 1:10000 dilution. Lysates/proteins: 25 µg per lane. Blocking buffer: 3 % nonfat dry milk in TBST. Detection: ECL Basic Kit (RM00020). Exposure time: 3s.



Immunofluorescence

Image 3. Immunofluorescence analysis of NIH-3T3 cells using LXRα Rabbit mAb (ABIN1679005, ABIN3018365, ABIN3018366 and ABIN7101602) at dilution of 1:100 (40x lens). Blue: DAPI for nuclear staining.

Please check the [product details page](#) for more images. Overall 7 images are available for ABIN7101602.