



[Go to Product page](#)

Datasheet for ABIN7101605
anti-Cyclin D3 antibody

2 Images

Overview

Quantity:	20 µL
Target:	Cyclin D3 (CCND3)
Reactivity:	Human
Host:	Rabbit
Clonality:	Monoclonal
Conjugate:	This Cyclin D3 antibody is un-conjugated
Application:	Western Blotting (WB)

Product Details

Immunogen:	A synthesized peptide derived from human Cyclin D3
Isotype:	IgG
Cross-Reactivity:	Human, Mouse, Rat
Characteristics:	Monoclonal Antibodies
Purification:	Affinity purification

Target Details

Target:	Cyclin D3 (CCND3)
Alternative Name:	CCND3 (CCND3 Products)
Background:	The protein encoded by this gene belongs to the highly conserved cyclin family, whose members are characterized by a dramatic periodicity in protein abundance through the cell

Target Details

cycle. Cyclins function as regulators of CDK kinases. Different cyclins exhibit distinct expression and degradation patterns which contribute to the temporal coordination of each mitotic event. This cyclin forms a complex with and functions as a regulatory subunit of CDK4 or CDK6, whose activity is required for cell cycle G1/S transition. This protein has been shown to interact with and be involved in the phosphorylation of tumor suppressor protein Rb. The CDK4 activity associated with this cyclin was reported to be necessary for cell cycle progression through G2 phase into mitosis after UV radiation. Several transcript variants encoding different isoforms have been found for this gene. [provided by RefSeq, Oct 2008],CCND3, cyclin D3,Cancer,Cell Biology & Developmental Biology,Cell Cycle,Cell Cycle_Cyclins,Epigenetics & Nuclear Signaling,G1/S Checkpoint,Hedgehog Signaling Pathway,CCND3

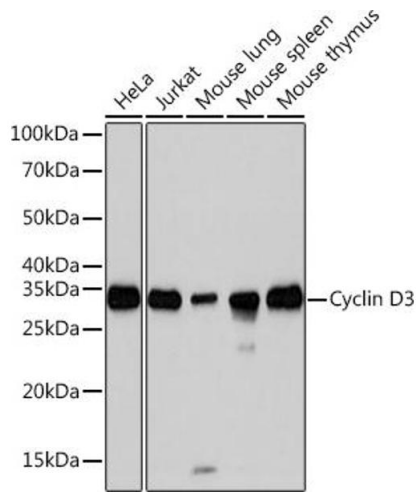
Molecular Weight:	32 kDa
Gene ID:	896
UniProt:	P30281
Pathways:	Cell Division Cycle , Mitotic G1-G1/S Phases , Glycosaminoglycan Metabolic Process

Application Details

Application Notes:	WB,1:500 - 1:2000
Restrictions:	For Research Use only

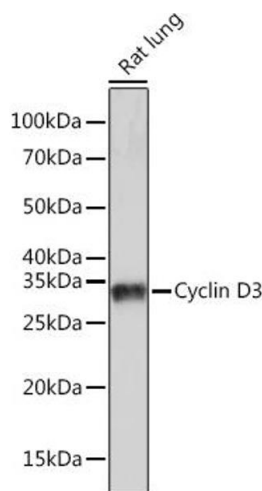
Handling

Buffer:	PBS with 0.02 % sodium azide,0.05 % BSA,50 % glycerol, pH 7.3.
Preservative:	Sodium azide
Precaution of Use:	This product contains Sodium azide: a POISONOUS AND HAZARDOUS SUBSTANCE which should be handled by trained staff only.
Storage:	-20 °C
Storage Comment:	Store at -20°C. Avoid freeze / thaw cycles.



Western Blotting

Image 1. Western blot analysis of extracts of various cell lines, using Cyclin D3 Rabbit mAb (ABIN1681042, ABIN3018381, ABIN3018382 and ABIN7101605) at 1:1000 dilution. Secondary antibody: HRP Goat Anti-Rabbit IgG (H+L) (ABIN1684268 and ABIN3020597) at 1:10000 dilution. Lysates/proteins: 25 µg per lane. Blocking buffer: 3 % nonfat dry milk in TBST. Detection: ECL Basic Kit (RM00020). Exposure time: 3s.



Western Blotting

Image 2. Western blot analysis of extracts of Rat lung, using Cyclin D3 Rabbit mAb (ABIN1681042, ABIN3018381, ABIN3018382 and ABIN7101605) at 1:1000 dilution. Secondary antibody: HRP Goat Anti-Rabbit IgG (H+L) (ABIN1684268 and ABIN3020597) at 1:10000 dilution. Lysates/proteins: 25 µg per lane. Blocking buffer: 3 % nonfat dry milk in TBST. Detection: ECL Basic Kit (RM00020). Exposure time: 10s.