

Datasheet for ABIN7101606
anti-S1PR1 antibody



[Go to Product page](#)

1 Image

Overview

Quantity:	20 µL
Target:	S1PR1
Reactivity:	Human
Host:	Rabbit
Clonality:	Monoclonal
Conjugate:	This S1PR1 antibody is un-conjugated
Application:	Western Blotting (WB)

Product Details

Immunogen:	A synthesized peptide derived from human EDG1/HEXIM1
Isotype:	IgG
Cross-Reactivity:	Human, Mouse, Rat
Characteristics:	Monoclonal Antibodies
Purification:	Affinity purification

Target Details

Target:	S1PR1
Alternative Name:	S1P1/EDG1 (S1PR1 Products)
Background:	The protein encoded by this gene is structurally similar to G protein-coupled receptors and is highly expressed in endothelial cells. It binds the ligand sphingosine-1-phosphate with high

Target Details

affinity and high specificity, and suggested to be involved in the processes that regulate the differentiation of endothelial cells. Activation of this receptor induces cell-cell adhesion. Alternative splicing results in multiple transcript variants. [provided by RefSeq, Mar 2016],CD363, CHEDG1, D1S3362, ECGF1, EDG-1, EDG1, S1P1,Angiogenesis,Apoptosis,Cardiovascular,CDs,Cell Adhesion,Cell Adhesion_Cell Adhesion Molecules,Cell Biology & Developmental Biology,Cytoskeleton,G protein signaling,G protein signaling_G-Protein-Coupled Receptors(GPCR),Immunology & Inflammation,Signal Transduction,S1P1/EDG1

Molecular Weight: 43 kDa

Gene ID: 1901

UniProt: [P21453](#)

Pathways: [Signaling Events mediated by VEGFR1 and VEGFR2](#)

Application Details

Application Notes: WB,1:500 - 1:2000

Restrictions: For Research Use only

Handling

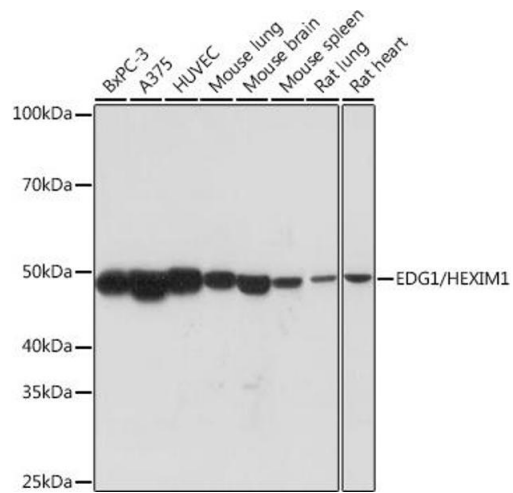
Buffer: PBS with 0.02 % sodium azide,0.05 % BSA,50 % glycerol, pH 7.3.

Preservative: Sodium azide

Precaution of Use: This product contains Sodium azide: a POISONOUS AND HAZARDOUS SUBSTANCE which should be handled by trained staff only.

Storage: -20 °C

Storage Comment: Store at -20°C. Avoid freeze / thaw cycles.



Western Blotting

Image 1. Western blot analysis of extracts of various cell lines, using EDG1/HEXIM1 Rabbit mAb (ABIN1682759, ABIN3018391, ABIN3018392 and ABIN7101606) at 1:1000 dilution. Secondary antibody: HRP Goat Anti-Rabbit IgG (H+L) (ABIN1684268 and ABIN3020597) at 1:10000 dilution. Lysates/proteins: 25 µg per lane. Blocking buffer: 3 % nonfat dry milk in TBST. Detection: ECL Basic Kit (RM00020). Exposure time: 90s.