



[Go to Product page](#)

Datasheet for ABIN7101607
anti-NDUFAF1 antibody

2 Images

Overview

Quantity:	20 µL
Target:	NDUFAF1
Reactivity:	Human
Host:	Rabbit
Clonality:	Monoclonal
Conjugate:	This NDUFAF1 antibody is un-conjugated
Application:	Western Blotting (WB), Immunofluorescence (IF)

Product Details

Immunogen:	A synthesized peptide derived from human NDUFAF1
Isotype:	IgG
Cross-Reactivity:	Human
Characteristics:	Monoclonal Antibodies
Purification:	Affinity purification

Target Details

Target:	NDUFAF1
Alternative Name:	NDUFAF1 (NDUFAF1 Products)
Background:	This gene encodes a complex I assembly factor protein. Complex I (NADH-ubiquinone oxidoreductase) catalyzes the transfer of electrons from NADH to ubiquinone (coenzyme Q) in

Target Details

the first step of the mitochondrial respiratory chain, resulting in the translocation of protons across the inner mitochondrial membrane. The encoded protein is required for assembly of complex I, and mutations in this gene are a cause of mitochondrial complex I deficiency. Alternatively spliced transcript variants have been observed for this gene, and a pseudogene of this gene is located on the long arm of chromosome 19. [provided by RefSeq, Dec 2011],CGI-65, CGI65, CIA30,Endocrine & Metabolism,Mitochondrial metabolism,Mitochondrial metabolism_Mitochondrial markers,Signal Transduction,NDUFAF1

Molecular Weight: 33 kDa

Gene ID: 51103

UniProt: [Q9Y375](#)

Pathways: [SARS-CoV-2 Protein Interactome](#)

Application Details

Application Notes: WB,1:500 - 1:2000,IF,1:50 - 1:200

Restrictions: For Research Use only

Handling

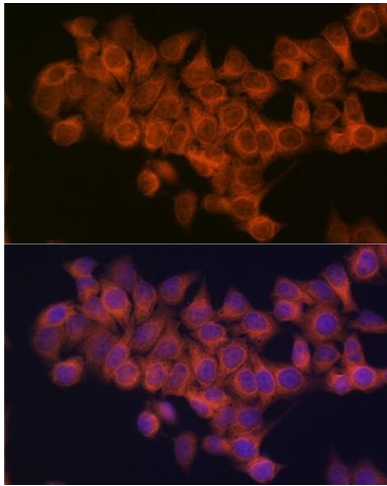
Buffer: PBS with 0.02 % sodium azide,0.05 % BSA,50 % glycerol, pH 7.3.

Preservative: Sodium azide

Precaution of Use: This product contains Sodium azide: a POISONOUS AND HAZARDOUS SUBSTANCE which should be handled by trained staff only.

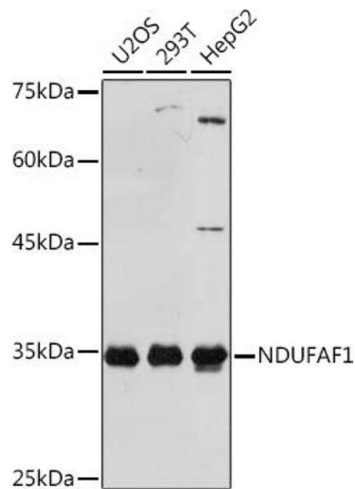
Storage: -20 °C

Storage Comment: Store at -20°C. Avoid freeze / thaw cycles.



Immunofluorescence

Image 1. Immunofluorescence analysis of HeLa cells using NDUF Rabbit mAb (ABIN1681278, ABIN3018403, ABIN3018404 and ABIN7101607) at dilution of 1:100 (40x lens). Blue: DAPI for nuclear staining.



Western Blotting

Image 2. Western blot analysis of extracts of various cell lines, using NDUF Rabbit mAb (ABIN1681278, ABIN3018403, ABIN3018404 and ABIN7101607) at 1:1000 dilution. Secondary antibody: HRP Goat Anti-Rabbit IgG (H+L) (ABIN1684268 and ABIN3020597) at 1:10000 dilution. Lysates/proteins: 25 µg per lane. Blocking buffer: 3 % nonfat dry milk in TBST. Detection: ECL Basic Kit (RM00020). Exposure time: 10s.