



[Go to Product page](#)

Datasheet for ABIN7101608

## anti-TRPC1 antibody

### 1 Image

#### Overview

Quantity:	20 µL
Target:	TRPC1
Reactivity:	Human
Host:	Rabbit
Clonality:	Monoclonal
Conjugate:	This TRPC1 antibody is un-conjugated
Application:	Western Blotting (WB)

#### Product Details

Immunogen:	A synthesized peptide derived from human TRPC1
Isotype:	IgG
Cross-Reactivity:	Human, Mouse, Rat
Characteristics:	Monoclonal Antibodies
Purification:	Affinity purification

#### Target Details

Target:	TRPC1
Alternative Name:	TRPC1 ( <a href="#">TRPC1 Products</a> )
Background:	The protein encoded by this gene is a membrane protein that can form a non-selective channel permeable to calcium and other cations. The encoded protein appears to be induced to form

## Target Details

channels by a receptor tyrosine kinase-activated phosphatidylinositol second messenger system and also by depletion of intracellular calcium stores. Two transcript variants encoding different isoforms have been found for this gene. [provided by RefSeq, Oct 2011],HTRP-1, TRP1,Calcium Signaling,Cardiovascular,Heart,Heart\_Hypertrophy,Neuroscience,Signal Transduction,TRPC1

Molecular Weight: 120 kDa

Gene ID: 7220

UniProt: [P48995](#)

## Application Details

Application Notes: WB,1:500 - 1:2000

Restrictions: For Research Use only

## Handling

Buffer: PBS with 0.02 % sodium azide,0.05 % BSA,50 % glycerol, pH 7.3.

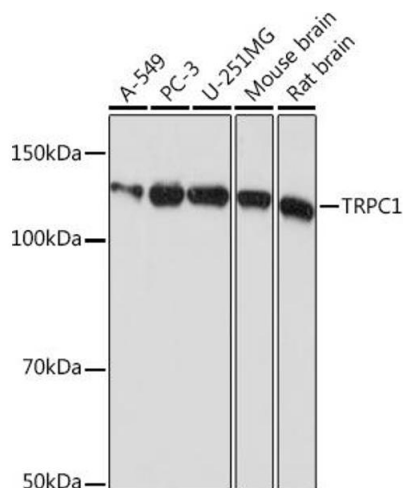
Preservative: Sodium azide

Precaution of Use: This product contains Sodium azide: a POISONOUS AND HAZARDOUS SUBSTANCE which should be handled by trained staff only.

Storage: -20 °C

Storage Comment: Store at -20°C. Avoid freeze / thaw cycles.

## Images



### Western Blotting

**Image 1.** Western blot analysis of extracts of various cell lines, using TRPC1 Rabbit mAb (ABIN1681339, ABIN7101608, ABIN7101609 and ABIN7101610) at 1:1000 dilution. Secondary antibody: HRP Goat Anti-Rabbit IgG (H+L) (ABIN1684268 and ABIN3020597) at 1:10000 dilution. Lysates/proteins: 25 µg per lane. Blocking buffer: 3 % nonfat dry milk in TBST. Detection: ECL Basic Kit (RM00020). Exposure time: 5s.