



[Go to Product page](#)

Datasheet for ABIN7101615

anti-SKP2 antibody

3 Images

Overview

Quantity:	20 µL
Target:	SKP2
Reactivity:	Human
Host:	Rabbit
Clonality:	Monoclonal
Conjugate:	This SKP2 antibody is un-conjugated
Application:	Western Blotting (WB), Immunohistochemistry (IHC)

Product Details

Immunogen:	A synthesized peptide derived from human SKP2
Isotype:	IgG
Cross-Reactivity:	Human, Mouse, Rat
Characteristics:	Monoclonal Antibodies
Purification:	Affinity purification

Target Details

Target:	SKP2
Alternative Name:	SKP2 (SKP2 Products)
Background:	This gene encodes a member of the F-box protein family which is characterized by an approximately 40 amino acid motif, the F-box. The F-box proteins constitute one of the four

Target Details

subunits of ubiquitin protein ligase complex called SCFs (SKP1-cullin-F-box), which function in phosphorylation-dependent ubiquitination. The F-box proteins are divided into 3 classes: Fbws containing WD-40 domains, Fbls containing leucine-rich repeats, and Fbxs containing either different protein-protein interaction modules or no recognizable motifs. The protein encoded by this gene belongs to the Fbls class, in addition to an F-box, this protein contains 10 tandem leucine-rich repeats. This protein is an essential element of the cyclin A-CDK2 S-phase kinase. It specifically recognizes phosphorylated cyclin-dependent kinase inhibitor 1B (CDKN1B, also referred to as p27 or KIP1) predominantly in S phase and interacts with S-phase kinase-associated protein 1 (SKP1 or p19). In addition, this gene is established as a protooncogene causally involved in the pathogenesis of lymphomas. Alternative splicing of this gene generates three transcript variants encoding different isoforms. [provided by RefSeq, Jul 2011],FBL1, FBXL1, FLB1, p45,Apoptosis,Cell Biology & Developmental Biology,Kinase,Signal Transduction,Ubiquitin,Ubiquitin_Ubiquitin-Proteasome Signaling Pathway,SKP2

Molecular Weight: 48 kDa

Gene ID: 6502

UniProt: [Q13309](#)

Pathways: [Mitotic G1-G1/S Phases](#)

Application Details

Application Notes: WB,1:500 - 1:2000,IHC,1:50 - 1:200

Restrictions: For Research Use only

Handling

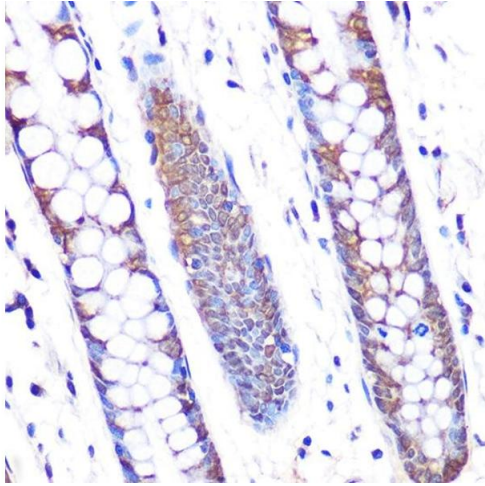
Buffer: PBS with 0.02 % sodium azide,0.05 % BSA,50 % glycerol, pH 7.3.

Preservative: Sodium azide

Precaution of Use: This product contains Sodium azide: a POISONOUS AND HAZARDOUS SUBSTANCE which should be handled by trained staff only.

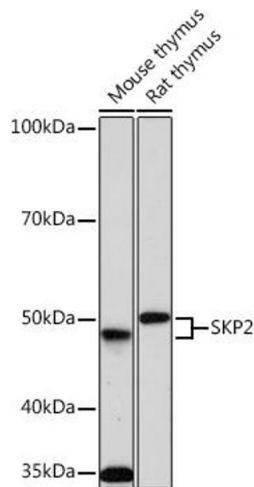
Storage: -20 °C

Storage Comment: Store at -20°C. Avoid freeze / thaw cycles.



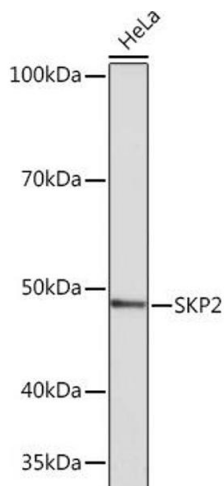
Immunohistochemistry

Image 1. Immunohistochemistry of paraffin-embedded human colon using SKP2 Rabbit mAb (ABIN1680764, ABIN3018459, ABIN3018460 and ABIN7101615) at dilution of 1:100 (40x lens). Perform microwave antigen retrieval with 10 mM PBS buffer pH 7.2 before commencing with IHC staining protocol.



Western Blotting

Image 2. Western blot analysis of extracts of various cell lines, using SKP2 Rabbit mAb (ABIN1680764, ABIN3018459, ABIN3018460 and ABIN7101615) at 1:1000 dilution. Secondary antibody: HRP Goat Anti-Rabbit IgG (H+L) (ABIN1684268 and ABIN3020597) at 1:10000 dilution. Lysates/proteins: 25 µg per lane. Blocking buffer: 3 % nonfat dry milk in TBST. Detection: ECL Enhanced Kit (RM00021). Exposure time: 3 min.



Western Blotting

Image 3. Western blot analysis of extracts of HeLa cells, using SKP2 Rabbit mAb (ABIN1680764, ABIN3018459, ABIN3018460 and ABIN7101615) at 1:1000 dilution. Secondary antibody: HRP Goat Anti-Rabbit IgG (H+L) (ABIN1684268 and ABIN3020597) at 1:10000 dilution. Lysates/proteins: 25 µg per lane. Blocking buffer: 3 % nonfat dry milk in TBST. Detection: ECL Basic Kit (RM00020). Exposure time: 3 min.