

Datasheet for ABIN7101618  
**anti-Calpain 2 antibody**



[Go to Product page](#)

1 Image

### Overview

Quantity:	20 µL
Target:	Calpain 2 (CAPN2)
Reactivity:	Human
Host:	Rabbit
Clonality:	Monoclonal
Conjugate:	This Calpain 2 antibody is un-conjugated
Application:	Western Blotting (WB)

### Product Details

Immunogen:	A synthesized peptide derived from human Calpain 2
Isotype:	IgG
Cross-Reactivity:	Human, Mouse, Rat
Characteristics:	Monoclonal Antibodies
Purification:	Affinity purification

### Target Details

Target:	Calpain 2 (CAPN2)
Alternative Name:	CAPN2 ( <a href="#">CAPN2 Products</a> )
Background:	The calpains, calcium-activated neutral proteases, are nonlysosomal, intracellular cysteine proteases. The mammalian calpains include ubiquitous, stomach-specific, and muscle-specific

## Target Details

---

proteins. The ubiquitous enzymes consist of heterodimers with distinct large, catalytic subunits associated with a common small, regulatory subunit. This gene encodes the large subunit of the ubiquitous enzyme, calpain 2. Multiple heterogeneous transcriptional start sites in the 5' UTR have been reported. Two transcript variants encoding different isoforms have been found for this gene. [provided by RefSeq, Mar 2009],CANP2, CANPL2, CANPml, mCANP,Apoptosis,Calcium Signaling,Cancer,Cell Biology & Developmental Biology,Endocrine & Metabolism,Immunology & Inflammation,Neurodegenerative Diseases,Neurodegenerative Diseases\_Amyloid Plaque and Neurofibrillary Tangle Formation in Alzheimers Disease,Neuroscience,Signal Transduction,T Cell Receptor Signaling Pathway,Ubiquitin,CAPN2

---

Molecular Weight: 80 kDa

---

Gene ID: 824

---

UniProt: [P17655](#)

## Application Details

---

Application Notes: WB,1:500 - 1:2000

---

Restrictions: For Research Use only

## Handling

---

Buffer: PBS with 0.02 % sodium azide,0.05 % BSA,50 % glycerol, pH 7.3.

---

Preservative: Sodium azide

---

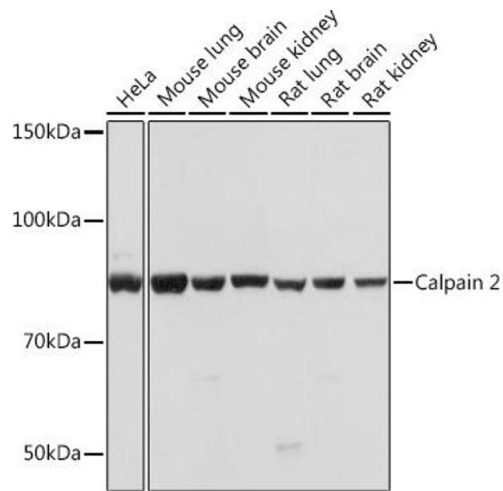
Precaution of Use: This product contains Sodium azide: a POISONOUS AND HAZARDOUS SUBSTANCE which should be handled by trained staff only.

---

Storage: -20 °C

---

Storage Comment: Store at -20°C. Avoid freeze / thaw cycles.



### Western Blotting

**Image 1.** Western blot analysis of extracts of various cell lines, using Calpain 2 Rabbit mAb (ABIN1682430, ABIN3018487, ABIN3018488 and ABIN7101618) at 1:1000 dilution. Secondary antibody: HRP Goat Anti-Rabbit IgG (H+L) (ABIN1684268 and ABIN3020597) at 1:10000 dilution. Lysates/proteins: 25  $\mu$ g per lane. Blocking buffer: 3% nonfat dry milk in TBST. Detection: ECL Basic Kit (RM00020). Exposure time: 5s.