



[Go to Product page](#)

Datasheet for ABIN7101620

anti-RBPJ antibody

3 Images

Overview

Quantity:	20 µL
Target:	RBPJ
Reactivity:	Human
Host:	Rabbit
Clonality:	Monoclonal
Conjugate:	This RBPJ antibody is un-conjugated
Application:	Western Blotting (WB), Immunohistochemistry (IHC)

Product Details

Immunogen:	A synthesized peptide derived from human RBPJK
Isotype:	IgG
Cross-Reactivity:	Human, Mouse
Characteristics:	Monoclonal Antibodies
Purification:	Affinity purification

Target Details

Target:	RBPJ
Alternative Name:	RBPJ (RBPJ Products)
Background:	The protein encoded by this gene is a transcriptional regulator important in the Notch signaling pathway. The encoded protein acts as a repressor when not bound to Notch proteins and an

Target Details

activator when bound to Notch proteins. It is thought to function by recruiting chromatin remodeling complexes containing histone deacetylase or histone acetylase proteins to Notch signaling pathway genes. Several transcript variants encoding different isoforms have been found for this gene, and several pseudogenes of this gene exist on chromosome 9. [provided by RefSeq, Oct 2013],AOS3, CBF1, IGKJRB, IGKJRB1, KBF2, RBP-J, RBPJK, RBPSUH, SUH, csl,Cell Biology & Developmental Biology,Epigenetics & Nuclear Signaling,Neuroscience,Notch Signaling Pathway,Signal Transduction,Stem Cells,Transcription Factors,RBPJ

Molecular Weight: 60 kDa

Gene ID: 3516

UniProt: [Q06330](#)

Pathways: [Notch Signaling](#), [Stem Cell Maintenance](#), [Smooth Muscle Cell Migration](#)

Application Details

Application Notes: WB,1:500 - 1:2000,IHC,1:50 - 1:200

Restrictions: For Research Use only

Handling

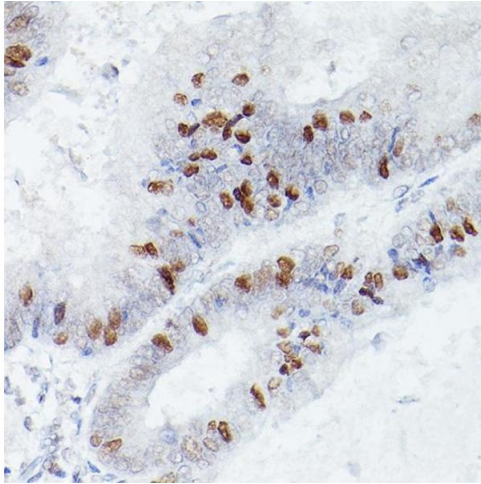
Buffer: PBS with 0.02 % sodium azide,0.05 % BSA,50 % glycerol, pH 7.3.

Preservative: Sodium azide

Precaution of Use: This product contains Sodium azide: a POISONOUS AND HAZARDOUS SUBSTANCE which should be handled by trained staff only.

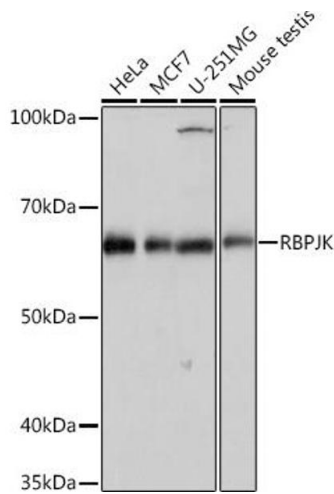
Storage: -20 °C

Storage Comment: Store at -20°C. Avoid freeze / thaw cycles.



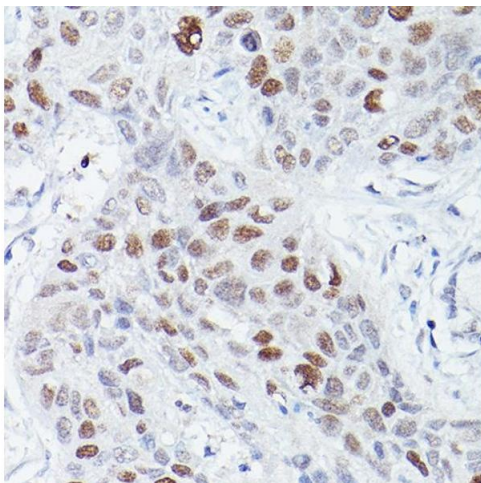
Immunohistochemistry

Image 1. Immunohistochemistry of paraffin-embedded human colon carcinoma using RBPJK Rabbit mAb (ABIN1682563, ABIN3018511, ABIN3018512 and ABIN7101620) at dilution of 1:50 (40x lens). Perform high pressure antigen retrieval with 10 mM citrate buffer pH 6.0 before commencing with IHC staining protocol.



Western Blotting

Image 2. Western blot analysis of extracts of various cell lines, using RBPJK Rabbit mAb (ABIN1682563, ABIN3018511, ABIN3018512 and ABIN7101620) at 1:1000 dilution. Secondary antibody: HRP Goat Anti-Rabbit IgG (H+L) (ABIN1684268 and ABIN3020597) at 1:10000 dilution. Lysates/proteins: 25 µg per lane. Blocking buffer: 3 % nonfat dry milk in TBST. Detection: ECL Basic Kit (RM00020). Exposure time: 10s.



Immunohistochemistry

Image 3. Immunohistochemistry of paraffin-embedded human lung squamous carcinoma tissue using RBPJK Rabbit mAb (ABIN1682563, ABIN3018511, ABIN3018512 and ABIN7101620) at dilution of 1:50 (40x lens). Perform high pressure antigen retrieval with 10 mM citrate buffer pH 6.0 before commencing with IHC staining protocol.