



[Go to Product page](#)

Datasheet for ABIN7101626

anti-Lipoprotein Lipase antibody

2 Images

Overview

Quantity:	20 µL
Target:	Lipoprotein Lipase (LPL)
Reactivity:	Human
Host:	Rabbit
Clonality:	Monoclonal
Conjugate:	This Lipoprotein Lipase antibody is un-conjugated
Application:	Western Blotting (WB)

Product Details

Immunogen:	A synthesized peptide derived from human Lipoprotein lipase (LPL) (LPL)
Isotype:	IgG
Cross-Reactivity:	Human, Mouse
Characteristics:	Monoclonal Antibodies
Purification:	Affinity purification

Target Details

Target:	Lipoprotein Lipase (LPL)
Alternative Name:	LPL (LPL Products)
Background:	LPL encodes lipoprotein lipase, which is expressed in heart, muscle, and adipose tissue. LPL functions as a homodimer, and has the dual functions of triglyceride hydrolase and

Target Details

ligand/bridging factor for receptor-mediated lipoprotein uptake. Severe mutations that cause LPL deficiency result in type I hyperlipoproteinemia, while less extreme mutations in LPL are linked to many disorders of lipoprotein metabolism. [provided by RefSeq, Jul 2008],HDLCQ11, LIPD,Cancer,Cardiovascular,Endocrine & Metabolism,Endocrine and metabolic diseases,Endocrine and metabolic diseases_Obesity,Lipid Metabolism,Lipid Metabolism_Lipases,Lipids,Mesenchymal Stem Cells,Neurodegenerative Diseases,Neuroscience,Signal Transduction,Stem Cells,LPL

Molecular Weight: 53 kDa

Gene ID: 4023

UniProt: [P06858](#)

Pathways: [Lipid Metabolism](#)

Application Details

Application Notes: WB,1:500 - 1:2000

Restrictions: For Research Use only

Handling

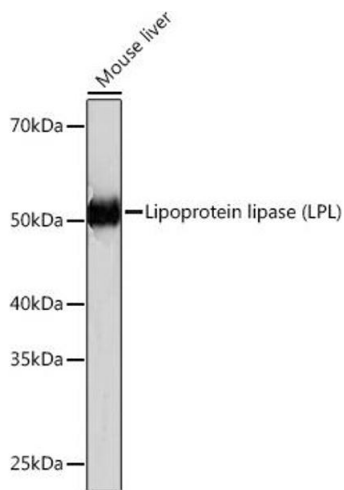
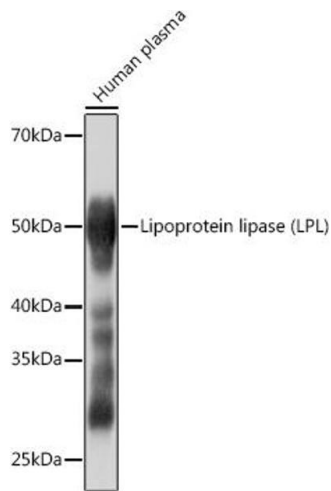
Buffer: PBS with 0.02 % sodium azide,0.05 % BSA,50 % glycerol, pH 7.3.

Preservative: Sodium azide

Precaution of Use: This product contains Sodium azide: a POISONOUS AND HAZARDOUS SUBSTANCE which should be handled by trained staff only.

Storage: -20 °C

Storage Comment: Store at -20°C. Avoid freeze / thaw cycles.



Western Blotting

Image 1. Western blot analysis of extracts of Human plasma, using Lipoprotein lipase (LPL) (LPL) Rabbit mAb (ABIN1682726, ABIN3018558, ABIN3018559 and ABIN7101626) at 1:1000 dilution. Secondary antibody: HRP Goat Anti-Rabbit IgG (H+L) (ABIN1684268 and ABIN3020597) at 1:10000 dilution. Lysates/proteins: 25 µg per lane. Blocking buffer: 3% nonfat dry milk in TBST. Detection: ECL Basic Kit (RM00020). Exposure time: 3s.

Western Blotting

Image 2. Western blot analysis of extracts of Mouse liver, using Lipoprotein lipase (LPL) (LPL) Rabbit mAb (ABIN1682726, ABIN3018558, ABIN3018559 and ABIN7101626) at 1:1000 dilution. Secondary antibody: HRP Goat Anti-Rabbit IgG (H+L) (ABIN1684268 and ABIN3020597) at 1:10000 dilution. Lysates/proteins: 25 µg per lane. Blocking buffer: 3% nonfat dry milk in TBST. Detection: ECL Basic Kit (RM00020). Exposure time: 3 min.