



[Go to Product page](#)

Datasheet for ABIN7101627

anti-TMEFF2 antibody

2 Images

Overview

Quantity:	20 µL
Target:	TMEFF2
Reactivity:	Human
Host:	Rabbit
Clonality:	Monoclonal
Conjugate:	This TMEFF2 antibody is un-conjugated
Application:	Western Blotting (WB), Immunohistochemistry (IHC)

Product Details

Immunogen:	A synthesized peptide derived from human TMEFF2
Isotype:	IgG
Cross-Reactivity:	Human, Rat
Characteristics:	Monoclonal Antibodies
Purification:	Affinity purification

Target Details

Target:	TMEFF2
Alternative Name:	TMEFF2 (TMEFF2 Products)
Background:	This gene encodes a member of the tomoregulin family of transmembrane proteins. This protein has been shown to function as both an oncogene and a tumor suppressor depending

Target Details

on the cellular context and may regulate prostate cancer cell invasion. Multiple soluble forms of this protein have been identified that arise from both an alternative splice variant and ectodomain shedding. Additionally, this gene has been found to be hypermethylated in multiple cancer types. Alternative splicing results in multiple transcript variants. [provided by RefSeq, Feb 2015],CT120.2, HPP1, TENB2, TPEF, TR, TR-2,Cancer,Cell Biology & Developmental Biology,Growth factors,Growth factors_EGF,TMEFF2

Molecular Weight: 41 kDa

Gene ID: 23671

UniProt: [Q9UIK5](#)

Application Details

Application Notes: WB,1:500 - 1:2000,IHC,1:50 - 1:200

Restrictions: For Research Use only

Handling

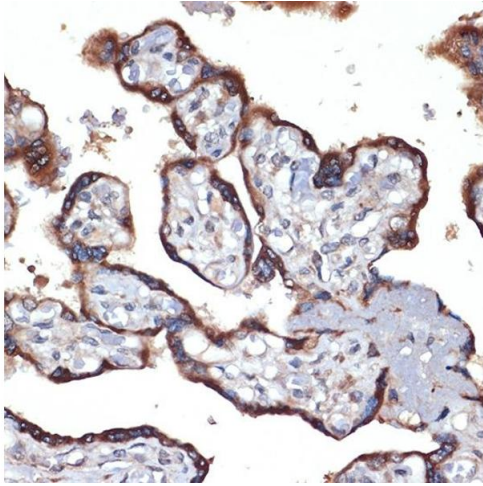
Buffer: PBS with 0.02 % sodium azide,0.05 % BSA,50 % glycerol, pH 7.3.

Preservative: Sodium azide

Precaution of Use: This product contains Sodium azide: a POISONOUS AND HAZARDOUS SUBSTANCE which should be handled by trained staff only.

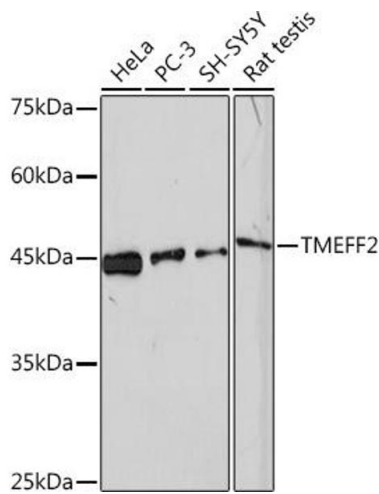
Storage: -20 °C

Storage Comment: Store at -20°C. Avoid freeze / thaw cycles.



Immunohistochemistry

Image 1. Immunohistochemistry of paraffin-embedded human placenta using TMEFF2 Rabbit mAb (ABIN1682727, ABIN3018560, ABIN3018561 and ABIN7101627) at dilution of 1:100 (40x lens). Perform microwave antigen retrieval with 10 mM Tris/EDTA buffer pH 9.0 before commencing with IHC staining protocol.



Western Blotting

Image 2. Western blot analysis of extracts of various cell lines, using TMEFF2 Rabbit mAb (ABIN1682727, ABIN3018560, ABIN3018561 and ABIN7101627) at 1:1000 dilution. Secondary antibody: HRP Goat Anti-Rabbit IgG (H+L) (ABIN1684268 and ABIN3020597) at 1:10000 dilution. Lysates/proteins: 25 µg per lane. Blocking buffer: 3 % nonfat dry milk in TBST. Detection: ECL Enhanced Kit (RM00021). Exposure time: 180s.