



[Go to Product page](#)

Datasheet for ABIN7101628

anti-Prolactin Receptor antibody

1 Image

Overview

Quantity:	20 µL
Target:	Prolactin Receptor (PRLR)
Reactivity:	Human
Host:	Rabbit
Clonality:	Monoclonal
Conjugate:	This Prolactin Receptor antibody is un-conjugated
Application:	Western Blotting (WB)

Product Details

Immunogen:	A synthesized peptide derived from human Prolactin Receptor
Isotype:	IgG
Cross-Reactivity:	Human, Mouse, Rat
Characteristics:	Monoclonal Antibodies
Purification:	Affinity purification

Target Details

Target:	Prolactin Receptor (PRLR)
Alternative Name:	PRLR (PRLR Products)
Background:	This gene encodes a receptor for the anterior pituitary hormone, prolactin, and belongs to the type I cytokine receptor family. Prolactin-dependent signaling occurs as the result of ligand-

Target Details

induced dimerization of the prolactin receptor. Several alternatively spliced transcript variants encoding different membrane-bound and soluble isoforms have been described for this gene, which may function to modulate the endocrine and autocrine effects of prolactin in normal tissue and cancer. [provided by RefSeq, Feb 2011],HPRL, MFAB, hPRLr1,Apoptosis,Cell Biology & Developmental Biology,Endocrine & Metabolism,Growth factors,Kinase,Kinase_Tyrosine kinases,Lipid Metabolism,Signal Transduction,PRLR

Molecular Weight: 95 kDa

Gene ID: 5618

UniProt: [P16471](#)

Pathways: [JAK-STAT Signaling](#), [Response to Growth Hormone Stimulus](#)

Application Details

Application Notes: WB,1:500 - 1:2000

Restrictions: For Research Use only

Handling

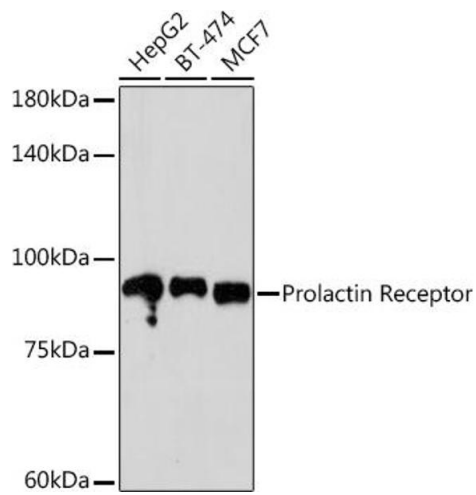
Buffer: PBS with 0.02 % sodium azide,0.05 % BSA,50 % glycerol, pH 7.3.

Preservative: Sodium azide

Precaution of Use: This product contains Sodium azide: a POISONOUS AND HAZARDOUS SUBSTANCE which should be handled by trained staff only.

Storage: -20 °C

Storage Comment: Store at -20°C. Avoid freeze / thaw cycles.



Western Blotting

Image 1. Western blot analysis of extracts of various cell lines, using Prolactin Receptor Rabbit mAb (ABIN1682845, ABIN3018570, ABIN3018571 and ABIN7101628) at 1:500 dilution. Secondary antibody: HRP Goat Anti-Rabbit IgG (H+L) (ABIN1684268 and ABIN3020597) at 1:10000 dilution. Lysates/proteins: 25 μ g per lane. Blocking buffer: 3 % nonfat dry milk in TBST. Detection: ECL Basic Kit (RM00020). Exposure time: 90s.