



[Go to Product page](#)

Datasheet for ABIN7101631

anti-XRCC1 antibody

1 Image

Overview

Quantity:	20 µL
Target:	XRCC1
Reactivity:	Human
Host:	Rabbit
Clonality:	Monoclonal
Conjugate:	This XRCC1 antibody is un-conjugated
Application:	Western Blotting (WB)

Product Details

Immunogen:	A synthesized peptide derived from human XRCC1
Isotype:	IgG
Cross-Reactivity:	Human, Mouse, Rat
Characteristics:	Monoclonal Antibodies
Purification:	Affinity purification

Target Details

Target:	XRCC1
Alternative Name:	XRCC1 (XRCC1 Products)
Background:	The protein encoded by this gene is involved in the efficient repair of DNA single-strand breaks formed by exposure to ionizing radiation and alkylating agents. This protein interacts with DNA

Target Details

ligase III, polymerase beta and poly (ADP-ribose) polymerase to participate in the base excision repair pathway. It may play a role in DNA processing during meiosis and recombination in germ cells. A rare microsatellite polymorphism in this gene is associated with cancer in patients of varying radiosensitivity. [provided by RefSeq, Jul 2008],RCC,Cancer,DNA Damage & Repair,Endocrine & Metabolism,Epigenetics & Nuclear Signaling,Nucleotide metabolism,Nucleotide metabolism_Purine and pyrimidine synthesis,XRCC1

Molecular Weight: 90 kDa

Gene ID: 7515

UniProt: [P18887](#)

Pathways: [DNA Damage Repair](#)

Application Details

Application Notes: WB,1:500 - 1:2000

Restrictions: For Research Use only

Handling

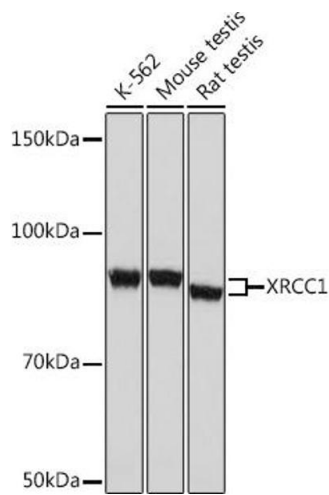
Buffer: PBS with 0.02 % sodium azide,0.05 % BSA,50 % glycerol, pH 7.3.

Preservative: Sodium azide

Precaution of Use: This product contains Sodium azide: a POISONOUS AND HAZARDOUS SUBSTANCE which should be handled by trained staff only.

Storage: -20 °C

Storage Comment: Store at -20°C. Avoid freeze / thaw cycles.



Western Blotting

Image 1. Western blot analysis of extracts of various cell lines, using XRCC1 Rabbit mAb (ABIN1682933, ABIN3018593, ABIN3018594 and ABIN7101631) at 1:1000 dilution. Secondary antibody: HRP Goat Anti-Rabbit IgG (H+L) (ABIN1684268 and ABIN3020597) at 1:10000 dilution. Lysates/proteins: 25 μ g per lane. Blocking buffer: 3% nonfat dry milk in TBST. Detection: ECL Basic Kit (RM00020). Exposure time: 5s.