

Datasheet for ABIN7101633  
**anti-ACPP antibody**



[Go to Product page](#)

1 Image

## Overview

Quantity:	20 µL
Target:	ACPP
Reactivity:	Human
Host:	Rabbit
Clonality:	Monoclonal
Conjugate:	This ACPP antibody is un-conjugated
Application:	Western Blotting (WB)

## Product Details

Immunogen:	A synthesized peptide derived from human Prostatic Acid Phosphatase (ACPP) (PAP/ACPP)
Isotype:	IgG
Cross-Reactivity:	Human, Mouse, Rat
Characteristics:	Monoclonal Antibodies
Purification:	Affinity purification

## Target Details

Target:	ACPP
Alternative Name:	<a href="#">ACPP (ACPP Products)</a>
Background:	This gene encodes an enzyme that catalyzes the conversion of orthophosphoric monoester to alcohol and orthophosphate. It is synthesized under androgen regulation and is secreted by the

## Target Details

---

epithelial cells of the prostate gland. An alternatively spliced transcript variant encoding a longer isoform has been found for this gene. This isoform contains a transmembrane domain and is localized in the plasma membrane-endosomal-lysosomal pathway. [provided by RefSeq, Sep 2008],5'-NT, ACP-3, ACP3,Cancer,Cell Biology & Developmental Biology,Tumor biomarkers,Ubiquitin,ACPP

---

Molecular Weight: 50 kDa

---

Gene ID: 55

---

UniProt: [P15309](#)

---

Pathways: [Synaptic Membrane](#), [Ribonucleoside Biosynthetic Process](#)

## Application Details

---

---

Application Notes: WB,1:500 - 1:2000

---

Restrictions: For Research Use only

## Handling

---

---

Buffer: PBS with 0.02 % sodium azide,0.05 % BSA,50 % glycerol, pH 7.3.

---

Preservative: Sodium azide

---

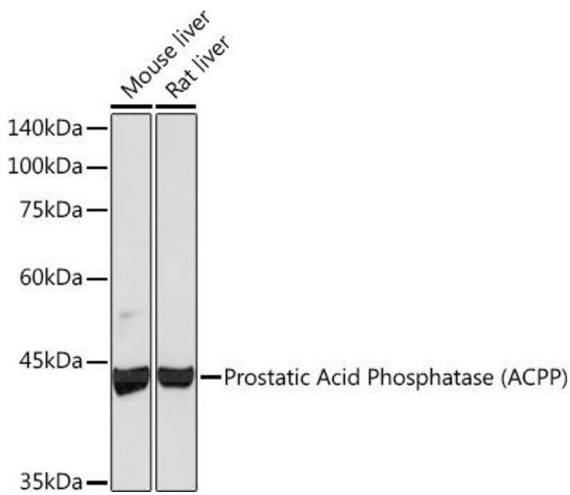
Precaution of Use: This product contains Sodium azide: a POISONOUS AND HAZARDOUS SUBSTANCE which should be handled by trained staff only.

---

Storage: -20 °C

---

Storage Comment: Store at -20°C. Avoid freeze / thaw cycles.



### Western Blotting

**Image 1.** Western blot analysis of extracts of various cell lines, using Prostatic Acid Phosphatase (ACPP) (PAP/ACPP) Rabbit mAb (ABIN1683136, ABIN3018597, ABIN3018598 and ABIN7101633) at 1:1000 dilution. Secondary antibody: HRP Goat Anti-Rabbit IgG (H+L) (ABIN1684268 and ABIN3020597) at 1:10000 dilution. Lysates/proteins: 25 µg per lane. Blocking buffer: 3% nonfat dry milk in TBST. Detection: ECL Basic Kit (RM00020). Exposure time: 180s.