



[Go to Product page](#)

Datasheet for ABIN7101637

anti-PGAM1 antibody

2 Images

Overview

| | |
|--------------|---|
| Quantity: | 20 µL |
| Target: | PGAM1 |
| Reactivity: | Human |
| Host: | Rabbit |
| Clonality: | Monoclonal |
| Conjugate: | This PGAM1 antibody is un-conjugated |
| Application: | Western Blotting (WB), Immunohistochemistry (IHC) |

Product Details

| | |
|-------------------|--|
| Immunogen: | A synthesized peptide derived from human PGAM1 |
| Isotype: | IgG |
| Cross-Reactivity: | Human, Mouse, Rat |
| Characteristics: | Monoclonal Antibodies |
| Purification: | Affinity purification |

Target Details

| | |
|-------------------|--|
| Target: | PGAM1 |
| Alternative Name: | PGAM1 (PGAM1 Products) |
| Background: | The protein encoded by this gene is a mutase that catalyzes the reversible reaction of 3-phosphoglycerate (3-PGA) to 2-phosphoglycerate (2-PGA) in the glycolytic pathway. Two |

Target Details

transcript variants encoding different isoforms have been found for this gene. [provided by RefSeq, Nov 2015],HEL-S-35, PGAM-B, PGAMA,Cancer,Carbohydrate metabolism,Endocrine & Metabolism,Signal Transduction,PGAM1

Molecular Weight: 29 kDa

Gene ID: 5223

UniProt: [P18669](#)

Pathways: [Regulation of Carbohydrate Metabolic Process](#)

Application Details

Application Notes: WB,1:500 - 1:2000,IHC,1:50 - 1:200

Restrictions: For Research Use only

Handling

Buffer: PBS with 0.02 % sodium azide,0.05 % BSA,50 % glycerol, pH 7.3.

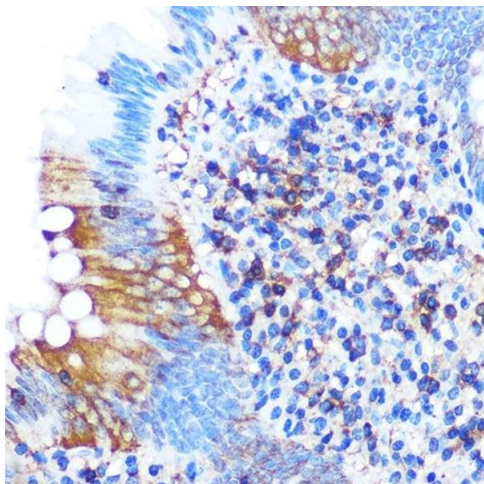
Preservative: Sodium azide

Precaution of Use: This product contains Sodium azide: a POISONOUS AND HAZARDOUS SUBSTANCE which should be handled by trained staff only.

Storage: -20 °C

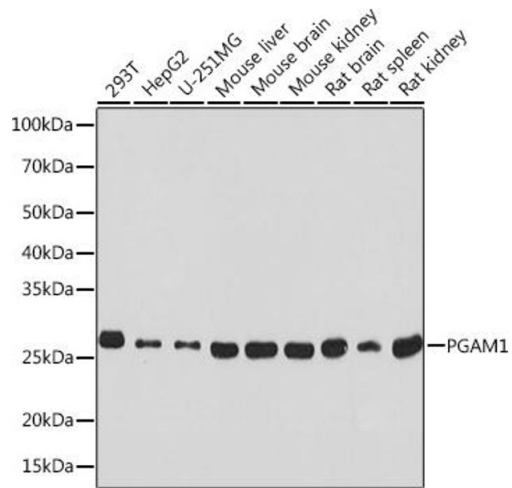
Storage Comment: Store at -20°C. Avoid freeze / thaw cycles.

Images



Immunohistochemistry

Image 1. Immunohistochemistry of paraffin-embedded human appendix using PG Rabbit mAb (ABIN1679556, ABIN3018645, ABIN3018646 and ABIN7101637) at dilution of 1:100 (40x lens). Perform microwave antigen retrieval with 10 mM PBS buffer pH 7.2 before commencing with IHC staining protocol.



Western Blotting

Image 2. Western blot analysis of extracts of various cell lines, using PG Rabbit mAb (ABIN1679556, ABIN3018645, ABIN3018646 and ABIN7101637) at 1:1000 dilution. Secondary antibody: HRP Goat Anti-Rabbit IgG (H+L) (ABIN1684268 and ABIN3020597) at 1:10000 dilution. Lysates/proteins: 25 µg per lane. Blocking buffer: 3 % nonfat dry milk in TBST. Detection: ECL Basic Kit (RM00020). Exposure time: 10s.