



Datasheet for ABIN7101639
anti-Syndecan 1 antibody



[Go to Product page](#)

3 Images

Overview

Quantity:	20 µL
Target:	Syndecan 1 (SDC1)
Reactivity:	Human
Host:	Rabbit
Clonality:	Monoclonal
Conjugate:	This Syndecan 1 antibody is un-conjugated
Application:	Western Blotting (WB), Immunohistochemistry (IHC), Immunofluorescence (IF)

Product Details

Immunogen:	A synthesized peptide derived from human Syndecan 1
Isotype:	IgG
Cross-Reactivity:	Human, Mouse, Rat
Characteristics:	Monoclonal Antibodies
Purification:	Affinity purification

Target Details

Target:	Syndecan 1 (SDC1)
Alternative Name:	SDC1 (SDC1 Products)
Background:	The protein encoded by this gene is a transmembrane (type I) heparan sulfate proteoglycan and is a member of the syndecan proteoglycan family. The syndecans mediate cell binding, cell

Target Details

signaling, and cytoskeletal organization and syndecan receptors are required for internalization of the HIV-1 tat protein. The syndecan-1 protein functions as an integral membrane protein and participates in cell proliferation, cell migration and cell-matrix interactions via its receptor for extracellular matrix proteins. Altered syndecan-1 expression has been detected in several different tumor types. While several transcript variants may exist for this gene, the full-length natures of only two have been described to date. These two represent the major variants of this gene and encode the same protein. [provided by RefSeq, Jul 2008],CD138, SDC, SYND1, syndecan,Cancer,CDs,Cell Adhesion,Cell Biology & Developmental Biology,Cell Type Marker,Cell Type Marker_Neuron marker,Cell Type Marker_Synapse marker,Cytoskeleton,Endocrine & Metabolism,Extracellular Matrix,Hematopoietic Progenitors,Immunology & Inflammation,Invasion and Metastasis,Lipid Metabolism,Neuroscience,Signal Transduction,Stem Cells,SDC1

Molecular Weight: 35 kDa

Gene ID: 6382

UniProt: [P18827](#)

Pathways: [Glycosaminoglycan Metabolic Process](#), [Regulation of Muscle Cell Differentiation](#), [Skeletal Muscle Fiber Development](#), [Lipid Metabolism](#)

Application Details

Application Notes: WB,1:500 - 1:2000,IHC,1:50 - 1:200,IF,1:50 - 1:200

Restrictions: For Research Use only

Handling

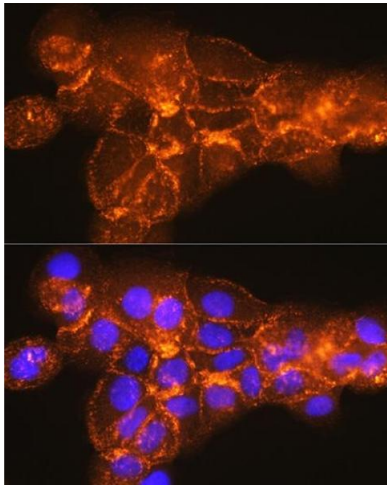
Buffer: PBS with 0.02 % sodium azide,0.05 % BSA,50 % glycerol, pH 7.3.

Preservative: Sodium azide

Precaution of Use: This product contains Sodium azide: a POISONOUS AND HAZARDOUS SUBSTANCE which should be handled by trained staff only.

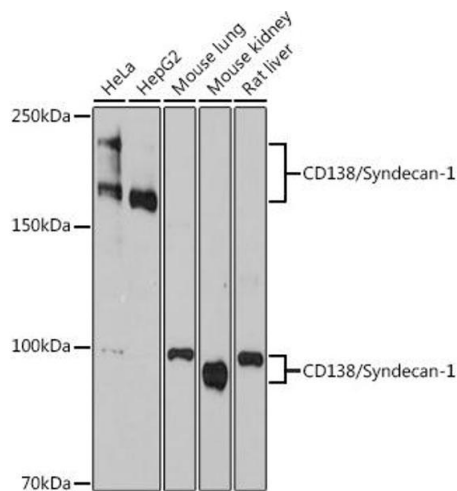
Storage: -20 °C

Storage Comment: Store at -20°C. Avoid freeze / thaw cycles.



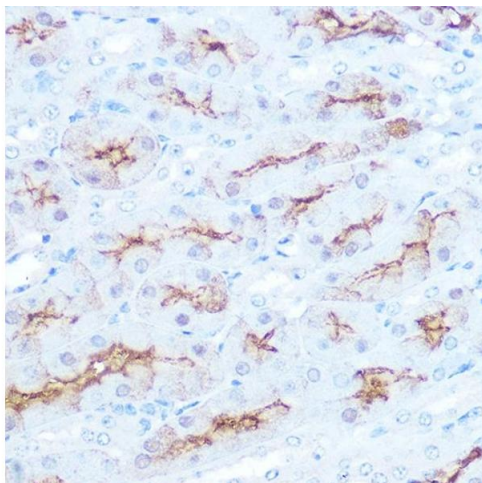
Immunofluorescence

Image 1. Immunofluorescence analysis of cells using CD138/Syndecan-1 Rabbit mAb (ABIN1683195, ABIN3018651, ABIN3018652 and ABIN7101639) at dilution of 1:100 (40x lens). Blue: DAPI for nuclear staining.



Western Blotting

Image 2. Western blot analysis of extracts of various cell lines, using Syndecan 1 Rabbit mAb (ABIN1683195, ABIN3018651, ABIN3018652 and ABIN7101639) at 1:1000 dilution. Secondary antibody: HRP Goat Anti-Rabbit IgG (H+L) (ABIN1684268 and ABIN3020597) at 1:10000 dilution. Lysates/proteins: 25 µg per lane. Blocking buffer: 3 % nonfat dry milk in TBST. Detection: ECL Basic Kit (RM00020). Exposure time: 90s.



Immunohistochemistry

Image 3. Immunohistochemistry of paraffin-embedded mouse kidney using CD138/Syndecan-1 Rabbit mAb (ABIN1683195, ABIN3018651, ABIN3018652 and ABIN7101639) at dilution of 1:100 (40x lens). Perform microwave antigen retrieval with 10 mM PBS buffer pH 7.2 before commencing with IHC staining protocol.