



[Go to Product page](#)

Datasheet for ABIN7101640

## anti-ESRRA antibody

### 1 Image

#### Overview

Quantity:	20 µL
Target:	ESRRA
Reactivity:	Human
Host:	Rabbit
Clonality:	Monoclonal
Conjugate:	This ESRRA antibody is un-conjugated
Application:	Western Blotting (WB)

#### Product Details

Immunogen:	A synthesized peptide derived from human ESRRA
Isotype:	IgG
Cross-Reactivity:	Human, Mouse
Characteristics:	Monoclonal Antibodies
Purification:	Affinity purification

#### Target Details

Target:	ESRRA
Alternative Name:	ESRRA ( <a href="#">ESRRA Products</a> )
Background:	The protein encoded by this gene is a nuclear receptor that is closely related to the estrogen receptor. This protein acts as a site-specific transcription regulator and has been also shown to

## Target Details

---

interact with estrogen and the transcription factor TFIIB by direct protein-protein contact. The binding and regulatory activities of this protein have been demonstrated in the regulation of a variety of genes including lactoferrin, osteopontin, medium-chain acyl coenzyme A dehydrogenase (MCAD) and thyroid hormone receptor genes. A processed pseudogene of ESRRRA is located on chromosome 13q12.1. Alternatively spliced transcript variants have been found for this gene. [provided by RefSeq, Sep 2013],ERR1, ERRa, ERRalpha, ESRL1, NR3B1,Cancer,Endocrine & Metabolism,Epigenetics & Nuclear Signaling,Mitochondrial metabolism,Mitochondrial metabolism\_Mitochondrial Biogenesis,Nuclear Receptor Signaling,Nuclear Receptor Signaling\_Nuclear hormone receptors,Nucleotide metabolism,Nucleotide metabolism\_Molecular processes,Signal Transduction,Transcription Factors,ESRRRA

---

Molecular Weight: 55 kDa

---

Gene ID: 2101

---

UniProt: [P11474](#)

---

Pathways: [Nuclear Receptor Transcription Pathway](#), [Steroid Hormone Mediated Signaling Pathway](#), [Regulation of Lipid Metabolism by PPARalpha](#)

## Application Details

---

---

Application Notes: WB,1:500 - 1:2000

---

Restrictions: For Research Use only

## Handling

---

---

Buffer: PBS with 0.02 % sodium azide,0.05 % BSA,50 % glycerol, pH 7.3.

---

Preservative: Sodium azide

---

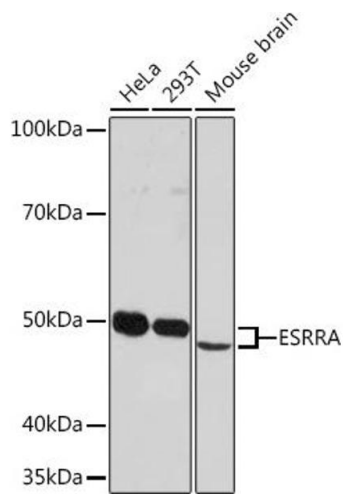
Precaution of Use: This product contains Sodium azide: a POISONOUS AND HAZARDOUS SUBSTANCE which should be handled by trained staff only.

---

Storage: -20 °C

---

Storage Comment: Store at -20°C. Avoid freeze / thaw cycles.



### Western Blotting

**Image 1.** Western blot analysis of extracts of various cell lines, using ESRRRA Rabbit mAb (ABIN1683199, ABIN7101640, ABIN7101641 and ABIN7101642) at 1:1000 dilution. Secondary antibody: HRP Goat Anti-Rabbit IgG (H+L) (ABIN1684268 and ABIN3020597) at 1:10000 dilution. Lysates/proteins: 25 µg per lane. Blocking buffer: 3 % nonfat dry milk in TBST. Detection: ECL Enhanced Kit (RM00021). Exposure time: 3 min.