



[Go to Product page](#)

Datasheet for ABIN7101646
anti-Aquaporin 1 antibody

5 Images

Overview

Quantity:	20 µL
Target:	Aquaporin 1 (AQP1)
Reactivity:	Human
Host:	Rabbit
Clonality:	Monoclonal
Conjugate:	This Aquaporin 1 antibody is un-conjugated
Application:	Western Blotting (WB), Immunohistochemistry (IHC)

Product Details

Immunogen:	A synthesized peptide derived from human Aquaporin-1 (Aquaporin-1 (AQP1))
Isotype:	IgG
Cross-Reactivity:	Human, Mouse, Rat
Characteristics:	Monoclonal Antibodies
Purification:	Affinity purification

Target Details

Target:	Aquaporin 1 (AQP1)
Alternative Name:	AQP1 (AQP1 Products)
Background:	This gene encodes a small integral membrane protein with six bilayer spanning domains that functions as a water channel protein. This protein permits passive transport of water along an

Target Details

osmotic gradient. This gene is a possible candidate for disorders involving imbalance in ocular fluid movement. [provided by RefSeq, Aug 2016],AQP-CHIP, CHIP28, CO,Cancer,Endocrine & Metabolism,Signal Transduction,AQP1

Molecular Weight: 28 kDa

Gene ID: 358

UniProt: [P29972](#)

Pathways: [Hormone Transport](#)

Application Details

Application Notes: WB,1:500 - 1:2000,IHC,1:50 - 1:200

Restrictions: For Research Use only

Handling

Buffer: PBS with 0.02 % sodium azide,0.05 % BSA,50 % glycerol, pH 7.3.

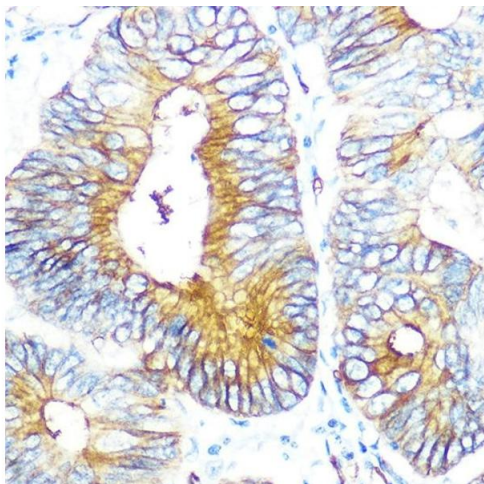
Preservative: Sodium azide

Precaution of Use: This product contains Sodium azide: a POISONOUS AND HAZARDOUS SUBSTANCE which should be handled by trained staff only.

Storage: -20 °C

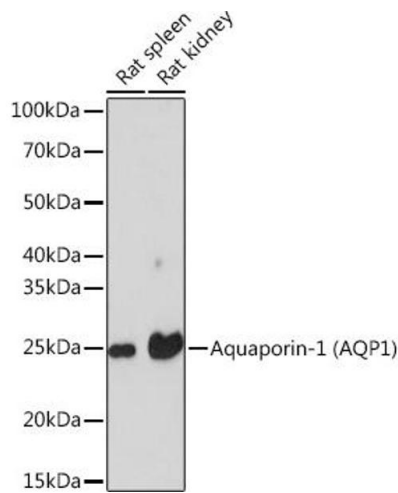
Storage Comment: Store at -20°C. Avoid freeze / thaw cycles.

Images



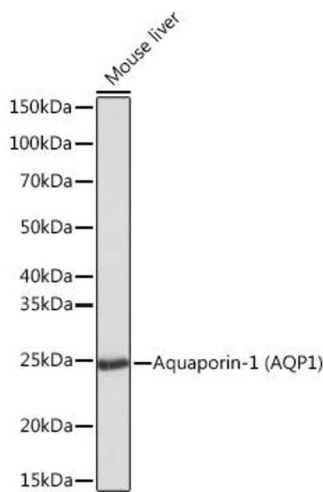
Immunohistochemistry

Image 1. Immunohistochemistry of paraffin-embedded human colon carcinoma using Aquaporin-1 (Aquaporin-1) Rabbit mAb (ABIN1682901, ABIN3018679, ABIN3018680 and ABIN7101646) at dilution of 1:100 (40x lens). Perform microwave antigen retrieval with 10 mM PBS buffer pH 7.2 before commencing with IHC staining protocol.



Western Blotting

Image 2. Western blot analysis of extracts of various cell lines, using Aquaporin-1 (Aquaporin-1) Rabbit mAb (ABIN1682901, ABIN3018679, ABIN3018680 and ABIN7101646) at 1:1000 dilution. Secondary antibody: HRP Goat Anti-Rabbit IgG (H+L) (ABIN1684268 and ABIN3020597) at 1:10000 dilution. Lysates/proteins: 25 µg per lane. Blocking buffer: 3 % nonfat dry milk in TBST. Detection: ECL Basic Kit (RM00020). Exposure time: 10s.



Western Blotting

Image 3. Western blot analysis of extracts of Mouse liver, using Aquaporin-1 (Aquaporin-1) Rabbit mAb (ABIN1682901, ABIN3018679, ABIN3018680 and ABIN7101646) at 1:1000 dilution. Secondary antibody: HRP Goat Anti-Rabbit IgG (H+L) (ABIN1684268 and ABIN3020597) at 1:10000 dilution. Lysates/proteins: 25 µg per lane. Blocking buffer: 3 % nonfat dry milk in TBST. Detection: ECL Basic Kit (RM00020). Exposure time: 1s.

Please check the [product details page](#) for more images. Overall 5 images are available for ABIN7101646.