



Datasheet for ABIN7101650

## anti-PLAT antibody



[Go to Product page](#)

### 2 Images

#### Overview

Quantity:	20 µL
Target:	PLAT
Reactivity:	Human
Host:	Rabbit
Clonality:	Monoclonal
Conjugate:	This PLAT antibody is un-conjugated
Application:	Western Blotting (WB), Immunofluorescence (IF)

#### Product Details

Immunogen:	A synthesized peptide derived from human tPA/tPA/PLAT
Isotype:	IgG
Cross-Reactivity:	Human, Mouse, Rat
Characteristics:	Monoclonal Antibodies
Purification:	Affinity purification

#### Target Details

Target:	PLAT
Alternative Name:	PLAT ( <a href="#">PLAT Products</a> )
Background:	This gene encodes tissue-type plasminogen activator, a secreted serine protease that converts the proenzyme plasminogen to plasmin, a fibrinolytic enzyme. The encoded preproprotein is

## Target Details

---

proteolytically processed by plasmin or trypsin to generate heavy and light chains. These chains associate via disulfide linkages to form the heterodimeric enzyme. This enzyme plays a role in cell migration and tissue remodeling. Increased enzymatic activity causes hyperfibrinolysis, which manifests as excessive bleeding, while decreased activity leads to hypofibrinolysis, which can result in thrombosis or embolism. Alternative splicing of this gene results in multiple transcript variants, at least one of which encodes an isoform that is proteolytically processed. [provided by RefSeq, Jan 2016],T-PA, TPA,Blood,Blood\_Serum Proteins,Cancer,Cardiovascular,Cell Biology & Developmental Biology,Endocrine & Metabolism,Hypoxia,Ubiquitin,PLAT

---

Molecular Weight: 63 kDa

---

Gene ID: 5327

---

UniProt: [P00750](#)

---

Pathways: [Autophagy](#), [Smooth Muscle Cell Migration](#), [Platelet-derived growth Factor Receptor Signaling](#), [SARS-CoV-2 Protein Interactome](#)

## Application Details

---

Application Notes: WB,1:500 - 1:2000,IF,1:50 - 1:200

---

Restrictions: For Research Use only

## Handling

---

Buffer: PBS with 0.02 % sodium azide,0.05 % BSA,50 % glycerol, pH 7.3.

---

Preservative: Sodium azide

---

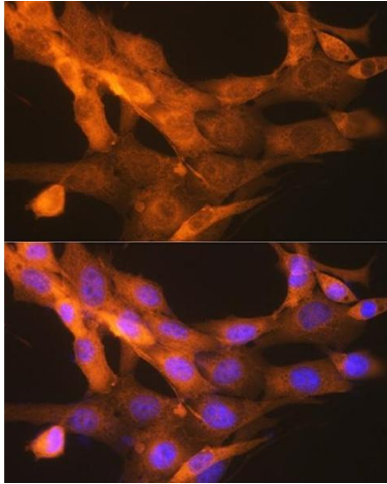
Precaution of Use: This product contains Sodium azide: a POISONOUS AND HAZARDOUS SUBSTANCE which should be handled by trained staff only.

---

Storage: -20 °C

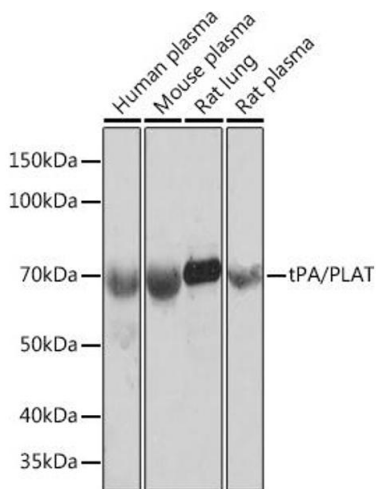
---

Storage Comment: Store at -20°C. Avoid freeze / thaw cycles.



### Immunofluorescence

**Image 1.** Immunofluorescence analysis of NIH-3T3 cells using tPA/tPA/PLAT Rabbit mAb (ABIN1678727, ABIN3018699, ABIN3018700 and ABIN7101650) at dilution of 1:100 (40x lens). Blue: DAPI for nuclear staining.



### Western Blotting

**Image 2.** Western blot analysis of extracts of various cell lines, using tPA/tPA/PLAT Rabbit mAb (ABIN1678727, ABIN3018699, ABIN3018700 and ABIN7101650) at 1:1000 dilution. Secondary antibody: HRP Goat Anti-Rabbit IgG (H+L) (ABIN1684268 and ABIN3020597) at 1:10000 dilution. Lysates/proteins: 25 µg per lane. Blocking buffer: 3 % nonfat dry milk in TBST. Detection: ECL Basic Kit (RM00020). Exposure time: 10s.