



[Go to Product page](#)

Datasheet for ABIN7101651

## anti-POLD1 antibody

### 1 Image

#### Overview

Quantity:	20 µL
Target:	POLD1
Reactivity:	Human
Host:	Rabbit
Clonality:	Monoclonal
Conjugate:	This POLD1 antibody is un-conjugated
Application:	Western Blotting (WB)

#### Product Details

Immunogen:	A synthesized peptide derived from human POLD1
Isotype:	IgG
Cross-Reactivity:	Human, Mouse, Rat
Characteristics:	Monoclonal Antibodies
Purification:	Affinity purification

#### Target Details

Target:	POLD1
Alternative Name:	POLD1 ( <a href="#">POLD1 Products</a> )
Background:	This gene encodes the 125-kDa catalytic subunit of DNA polymerase delta. DNA polymerase delta possesses both polymerase and 3' to 5' exonuclease activity and plays a critical role in

## Target Details

---

DNA replication and repair. Alternatively spliced transcript variants have been observed for this gene, and a pseudogene of this gene is located on the long arm of chromosome 6. [provided by RefSeq, Mar 2012],CDC2, CRCS10, MDPL, POLD,Epigenetics & Nuclear Signaling,POLD1

Molecular Weight: 124 kDa

Gene ID: 5424

UniProt: [P28340](#)

Pathways: [Telomere Maintenance](#), [DNA Damage Repair](#), [DNA Replication](#), [Chromatin Binding](#), [Synthesis of DNA](#)

## Application Details

---

Application Notes: WB,1:500 - 1:2000

Restrictions: For Research Use only

## Handling

---

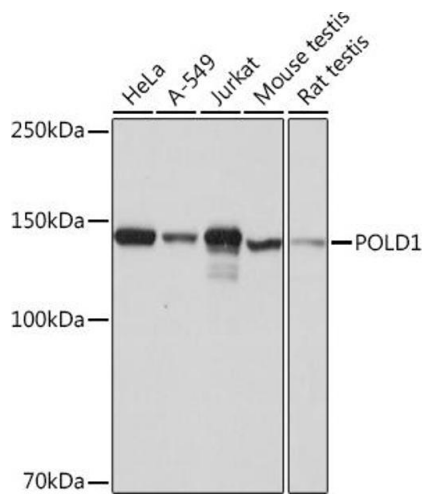
Buffer: PBS with 0.02 % sodium azide,0.05 % BSA,50 % glycerol, pH 7.3.

Preservative: Sodium azide

Precaution of Use: This product contains Sodium azide: a POISONOUS AND HAZARDOUS SUBSTANCE which should be handled by trained staff only.

Storage: -20 °C

Storage Comment: Store at -20°C. Avoid freeze / thaw cycles.



### Western Blotting

**Image 1.** Western blot analysis of extracts of various cell lines, using POLD1 Rabbit mAb (ABIN1682929, ABIN3018707, ABIN3018708 and ABIN7101651) at 1:1000 dilution. Secondary antibody: HRP Goat Anti-Rabbit IgG (H+L) (ABIN1684268 and ABIN3020597) at 1:10000 dilution. Lysates/proteins: 25  $\mu$ g per lane. Blocking buffer: 3% nonfat dry milk in TBST. Detection: ECL Basic Kit (RM00020). Exposure time: 1s.