



[Go to Product page](#)

Datasheet for ABIN7101652

anti-WNK1 antibody

1 Image

Overview

Quantity:	20 µL
Target:	WNK1
Reactivity:	Human
Host:	Rabbit
Clonality:	Monoclonal
Conjugate:	This WNK1 antibody is un-conjugated
Application:	Western Blotting (WB)

Product Details

Immunogen:	A synthesized peptide derived from human WNK1
Isotype:	IgG
Cross-Reactivity:	Mouse
Characteristics:	Monoclonal Antibodies
Purification:	Affinity purification

Target Details

Target:	WNK1
Alternative Name:	WNK1 (WNK1 Products)
Background:	This gene encodes a member of the WNK subfamily of serine/threonine protein kinases. The encoded protein may be a key regulator of blood pressure by controlling the transport of

Target Details

sodium and chloride ions. Mutations in this gene have been associated with pseudohypoaldosteronism type II and hereditary sensory neuropathy type II. Alternatively spliced transcript variants encoding different isoforms have been described but the full-length nature of all of them has yet to be determined.[provided by RefSeq, May 2010],HSAN2, HSN2, KDP, PPP1R167, PRKWNK1, PSK, p65,Kinase,Protein phosphorylation,Signal Transduction,WNK1

Molecular Weight: 251 kDa

Gene ID: 65125

UniProt: [Q9H4A3](#)

Application Details

Application Notes: WB,1:500 - 1:2000

Restrictions: For Research Use only

Handling

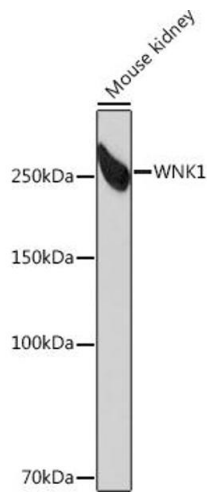
Buffer: PBS with 0.02 % sodium azide,0.05 % BSA,50 % glycerol, pH 7.3.

Preservative: Sodium azide

Precaution of Use: This product contains Sodium azide: a POISONOUS AND HAZARDOUS SUBSTANCE which should be handled by trained staff only.

Storage: -20 °C

Storage Comment: Store at -20°C. Avoid freeze / thaw cycles.



Western Blotting

Image 1. Western blot analysis of extracts of Mouse kidney, using WNK1 Rabbit mAb (ABIN1682526, ABIN3018711, ABIN3018712 and ABIN7101652) at 1:1000 dilution. Secondary antibody: HRP Goat Anti-Rabbit IgG (H+L) (ABIN1684268 and ABIN3020597) at 1:10000 dilution. Lysates/proteins: 25 μ g per lane. Blocking buffer: 3% nonfat dry milk in TBST. Detection: ECL Basic Kit (RM00020). Exposure time: 3 min.