



[Go to Product page](#)

Datasheet for ABIN7101659

## anti-CBX3 antibody

### 3 Images

#### Overview

Quantity:	20 µL
Target:	CBX3
Reactivity:	Human
Host:	Rabbit
Clonality:	Monoclonal
Conjugate:	This CBX3 antibody is un-conjugated
Application:	Western Blotting (WB), Immunohistochemistry (IHC)

#### Product Details

Immunogen:	A synthesized peptide derived from human HP1 gamma/CBX3
Isotype:	IgG
Cross-Reactivity:	Human, Mouse, Rat
Characteristics:	Monoclonal Antibodies
Purification:	Affinity purification

#### Target Details

Target:	CBX3
Alternative Name:	CBX3 ( <a href="#">CBX3 Products</a> )
Background:	At the nuclear envelope, the nuclear lamina and heterochromatin are adjacent to the inner nuclear membrane. The protein encoded by this gene binds DNA and is a component of

## Target Details

---

heterochromatin. This protein also can bind lamin B receptor, an integral membrane protein found in the inner nuclear membrane. The dual binding functions of the encoded protein may explain the association of heterochromatin with the inner nuclear membrane. This protein binds histone H3 tails methylated at Lys-9 sites. This protein is also recruited to sites of ultraviolet-induced DNA damage and double-strand breaks. Two transcript variants encoding the same protein but differing in the 5' UTR, have been found for this gene.[provided by RefSeq, Mar 2011],HECH, HP1-GAMMA, HP1Hs-gamma,Epigenetics & Nuclear Signaling,Protein phosphorylation,CBX3

---

Molecular Weight: 24 kDa

---

Gene ID: 11335

---

UniProt: [Q13185](#)

## Application Details

---

Application Notes: WB,1:500 - 1:2000,IHC,1:50 - 1:200

---

Restrictions: For Research Use only

## Handling

---

Buffer: PBS with 0.02 % sodium azide,0.05 % BSA,50 % glycerol, pH 7.3.

---

Preservative: Sodium azide

---

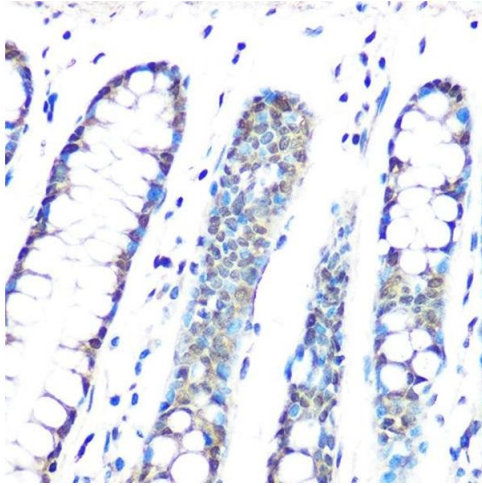
Precaution of Use: This product contains Sodium azide: a POISONOUS AND HAZARDOUS SUBSTANCE which should be handled by trained staff only.

---

Storage: -20 °C

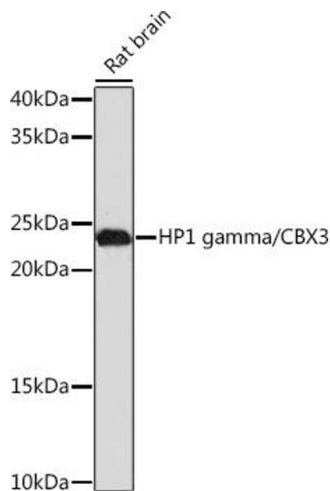
---

Storage Comment: Store at -20°C. Avoid freeze / thaw cycles.



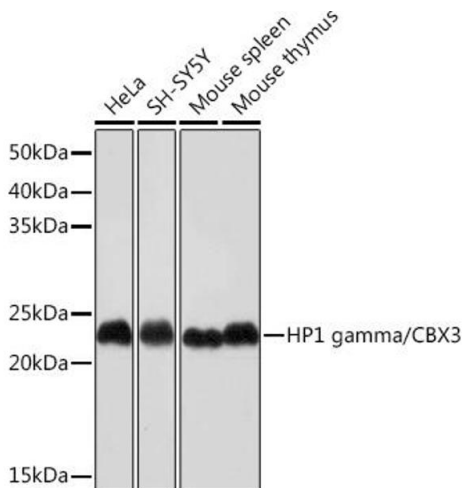
### Immunohistochemistry

**Image 1.** Immunohistochemistry of paraffin-embedded human colon using HP1 gamma/CBX3 Rabbit mAb (ABIN1679484, ABIN3018775, ABIN3018776 and ABIN7101659) at dilution of 1:100 (40x lens). Perform microwave antigen retrieval with 10 mM PBS buffer pH 7.2 before commencing with IHC staining protocol.



### Western Blotting

**Image 2.** Western blot analysis of extracts of Rat brain, using HP1 gamma/CBX3 Rabbit mAb (ABIN1679484, ABIN3018775, ABIN3018776 and ABIN7101659) at 1:1000 dilution. Secondary antibody: HRP Goat Anti-Rabbit IgG (H+L) (ABIN1684268 and ABIN3020597) at 1:10000 dilution. Lysates/proteins: 25 µg per lane. Blocking buffer: 3 % nonfat dry milk in TBST. Detection: ECL Enhanced Kit (RM00021). Exposure time: 3 min.



### Western Blotting

**Image 3.** Western blot analysis of extracts of various cell lines, using HP1 gamma/CBX3 Rabbit mAb (ABIN1679484, ABIN3018775, ABIN3018776 and ABIN7101659) at 1:1000 dilution. Secondary antibody: HRP Goat Anti-Rabbit IgG (H+L) (ABIN1684268 and ABIN3020597) at 1:10000 dilution. Lysates/proteins: 25 µg per lane. Blocking buffer: 3 % nonfat dry milk in TBST. Detection: ECL Basic Kit (RM00020). Exposure time: 60s.