

Datasheet for ABIN7101661

anti-CCR8 antibody

2 Images



[Go to Product page](#)

Overview

Quantity:	20 µL
Target:	CCR8
Reactivity:	Human
Host:	Rabbit
Clonality:	Monoclonal
Conjugate:	This CCR8 antibody is un-conjugated
Application:	Western Blotting (WB), Immunofluorescence (IF)

Product Details

Immunogen:	A synthesized peptide derived from human CCR8
Isotype:	IgG
Cross-Reactivity:	Human, Mouse
Characteristics:	Monoclonal Antibodies
Purification:	Affinity purification

Target Details

Target:	CCR8
Alternative Name:	CCR8 (CCR8 Products)
Background:	This gene encodes a member of the beta chemokine receptor family, which is predicted to be a seven transmembrane protein similar to G protein-coupled receptors. Chemokines and their

Target Details

receptors are important for the migration of various cell types into the inflammatory sites. This receptor protein preferentially expresses in the thymus. I-309, thymus activation-regulated cytokine (TARC) and macrophage inflammatory protein-1 beta (MIP-1 beta) have been identified as ligands of this receptor. Studies of this receptor and its ligands suggested its role in regulation of monocyte chemotaxis and thymic cell apoptosis. More specifically, this receptor may contribute to the proper positioning of activated T cells within the antigenic challenge sites and specialized areas of lymphoid tissues. This gene is located at the chemokine receptor gene cluster region. [provided by RefSeq, Jul 2008],CC-CKR-8, CCR-8, CDw198, CKRL1, CMKBR8, CMKBRL2, CY6, GPRCY6, TER1,CDs,Cell Intrinsic Innate Immunity Signaling Pathway,G protein signaling,G protein signaling_G-Protein-Coupled Receptors(GPCR),Immunology & Inflammation,Innate Immunity_Chemokines,Signal Transduction,CCR8

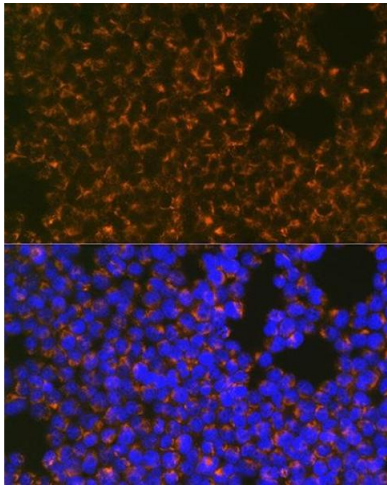
Molecular Weight:	41 kDa
Gene ID:	1237
UniProt:	P51685

Application Details

Application Notes:	WB,1:500 - 1:2000,IF,1:50 - 1:200
Restrictions:	For Research Use only

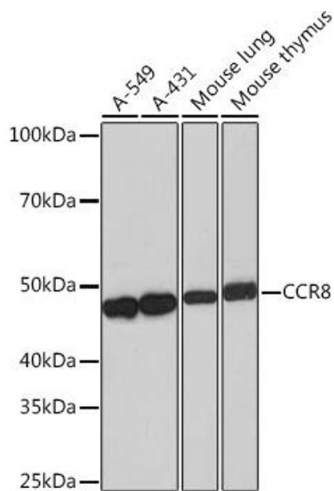
Handling

Buffer:	PBS with 0.02 % sodium azide,0.05 % BSA,50 % glycerol, pH 7.3.
Preservative:	Sodium azide
Precaution of Use:	This product contains Sodium azide: a POISONOUS AND HAZARDOUS SUBSTANCE which should be handled by trained staff only.
Storage:	-20 °C
Storage Comment:	Store at -20°C. Avoid freeze / thaw cycles.



Immunofluorescence

Image 1. Immunofluorescence analysis of Jurkat cells using CCR8 Rabbit mAb (ABIN1683150, ABIN3018779, ABIN3018780 and ABIN7101661) at dilution of 1:100 (40x lens). Blue: DAPI for nuclear staining.



Western Blotting

Image 2. Western blot analysis of extracts of various cell lines, using CCR8 Rabbit mAb (ABIN1683150, ABIN3018779, ABIN3018780 and ABIN7101661) at 1:1000 dilution. Secondary antibody: HRP Goat Anti-Rabbit IgG (H+L) (ABIN1684268 and ABIN3020597) at 1:10000 dilution. Lysates/proteins: 25 µg per lane. Blocking buffer: 3 % nonfat dry milk in TBST. Detection: ECL Basic Kit (RM00020). Exposure time: 60s.