



Datasheet for ABIN7101662  
**anti-THO Complex 4 antibody**



[Go to Product page](#)

4 Images

Overview

Quantity:	20 µL
Target:	THO Complex 4 (THOC4)
Reactivity:	Human
Host:	Rabbit
Clonality:	Monoclonal
Conjugate:	This THO Complex 4 antibody is un-conjugated
Application:	Western Blotting (WB), Immunohistochemistry (IHC)

Product Details

Immunogen:	A synthesized peptide derived from human THOC4/THOC4/ALYREFREF
Isotype:	IgG
Cross-Reactivity:	Human, Mouse, Rat
Characteristics:	Monoclonal Antibodies
Purification:	Affinity purification

Target Details

Target:	THO Complex 4 (THOC4)
Alternative Name:	ALYREF ( <a href="#">THOC4 Products</a> )
Background:	The protein encoded by this gene is a heat stable, nuclear protein and functions as a molecular chaperone. It is thought to regulate dimerization, DNA binding, and transcriptional activity of

## Target Details

basic region-leucine zipper (bZIP) proteins. [provided by RefSeq, Jul 2008],ALY, ALY/REF, BEF, REF, THOC4,Epigenetics & Nuclear Signaling,RNA Binding,ALYREF

Molecular Weight: 27 kDa

Gene ID: 10189

UniProt: [Q86V81](#)

## Application Details

Application Notes: WB,1:500 - 1:2000,IHC,1:50 - 1:200

Restrictions: For Research Use only

## Handling

Buffer: PBS with 0.02 % sodium azide,0.05 % BSA,50 % glycerol, pH 7.3.

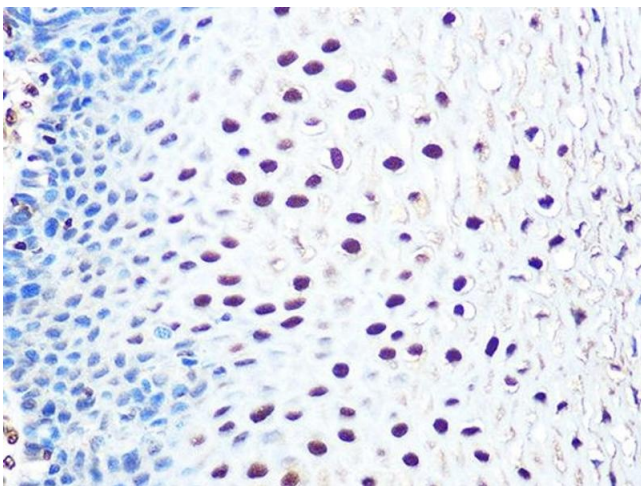
Preservative: Sodium azide

Precaution of Use: This product contains Sodium azide: a POISONOUS AND HAZARDOUS SUBSTANCE which should be handled by trained staff only.

Storage: -20 °C

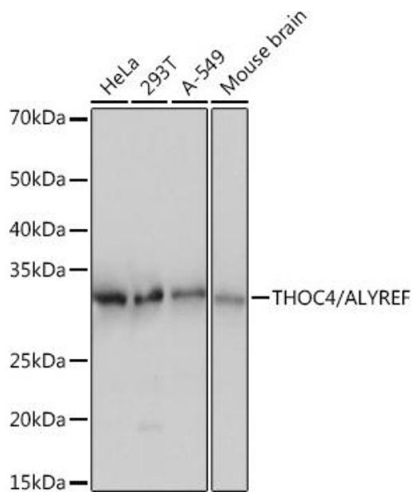
Storage Comment: Store at -20°C. Avoid freeze / thaw cycles.

## Images



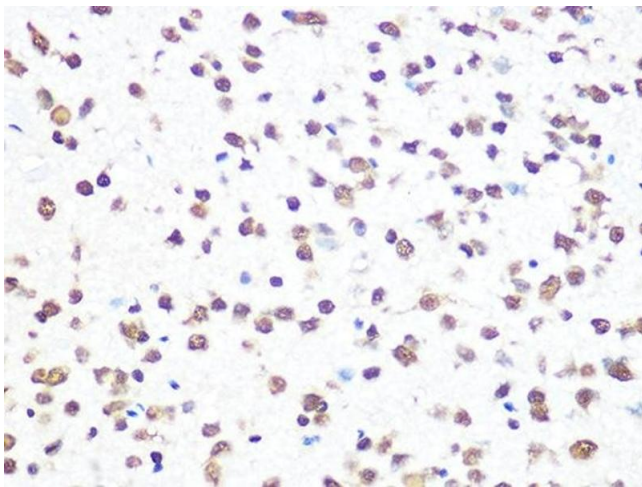
### Immunohistochemistry

**Image 1.** Immunohistochemistry of paraffin-embedded human esophageal using THOC4/THOC4/ALYREFREF Rabbit mAb (ABIN1679512, ABIN3018793, ABIN3018794 and ABIN7101662) at dilution of 1:100 (40x lens). Perform microwave antigen retrieval with 10 mM PBS buffer pH 7.2 before commencing with IHC staining protocol.



### Western Blotting

**Image 2.** Western blot analysis of extracts from various cell lines, including HeLa, 293T, A-549, and Mouse brain, using THOC4/THOC4/ALYREF Rabbit mAb (ABIN1679512, ABIN3018793, ABIN3018794, and ABIN7101662) at a 1:1000 dilution. Secondary antibody: HRP Goat Anti-Rabbit IgG (H+L) (ABIN1684268 and ABIN3020597) at a 1:10000 dilution. Lysates/proteins: 25 µg per lane. Blocking buffer: 3% nonfat dry milk in TBST. Detection: ECL Basic Kit (RM00020). Exposure time: 1 s.



### Immunohistochemistry

**Image 3.** Immunohistochemistry of paraffin-embedded rat brain tissue using THOC4/THOC4/ALYREF Rabbit mAb (ABIN1679512, ABIN3018793, ABIN3018794, and ABIN7101662) at a dilution of 1:100 (40x lens). Perform microwave antigen retrieval with 10 mM PBS buffer pH 7.2 before commencing with IHC staining protocol.

Please check the [product details page](#) for more images. Overall 4 images are available for ABIN7101662.