



[Go to Product page](#)

Datasheet for ABIN7101664

anti-PLAP antibody

3 Images

Overview

Quantity:	20 µL
Target:	PLAP (ALPP)
Reactivity:	Human
Host:	Rabbit
Clonality:	Monoclonal
Conjugate:	This PLAP antibody is un-conjugated
Application:	Western Blotting (WB), Immunohistochemistry (IHC)

Product Details

Immunogen:	A synthesized peptide derived from human Placental alkaline phosphatase (PLAP)
Isotype:	IgG
Cross-Reactivity:	Human, Mouse, Rat
Characteristics:	Monoclonal Antibodies
Purification:	Affinity purification

Target Details

Target:	PLAP (ALPP)
Alternative Name:	ALPP (ALPP Products)
Background:	The protein encoded by this gene is an alkaline phosphatase, a metalloenzyme that catalyzes the hydrolysis of phosphoric acid monoesters. It belongs to a multigene family composed of

Target Details

four alkaline phosphatase isoenzymes. The enzyme functions as a homodimer and has a catalytic site containing one magnesium and two zinc ions, which are required for its enzymatic function. The protein is primarily expressed in placental and endometrial tissue, however, strong ectopic expression has been detected in ovarian adenocarcinoma, serous cystadenocarcinoma, and other ovarian cancer cells. [provided by RefSeq, Jan 2015],ALP, PALP, PLAP, PLAP-1,Stem Cells,ALPP

Molecular Weight: 70 kDa

Gene ID: 250

UniProt: [P05187](#)

Application Details

Application Notes: WB,1:500 - 1:2000,IHC,1:50 - 1:200

Restrictions: For Research Use only

Handling

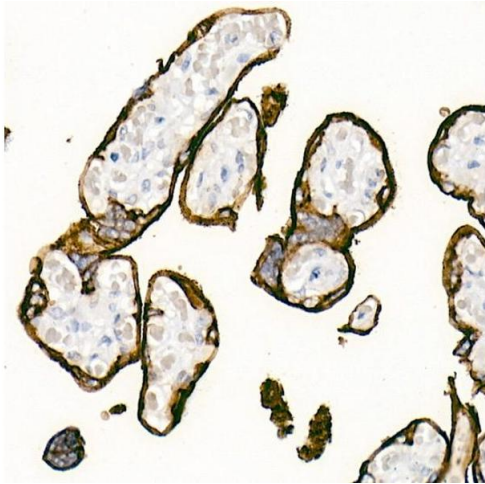
Buffer: PBS with 0.02 % sodium azide,0.05 % BSA,50 % glycerol, pH 7.3.

Preservative: Sodium azide

Precaution of Use: This product contains Sodium azide: a POISONOUS AND HAZARDOUS SUBSTANCE which should be handled by trained staff only.

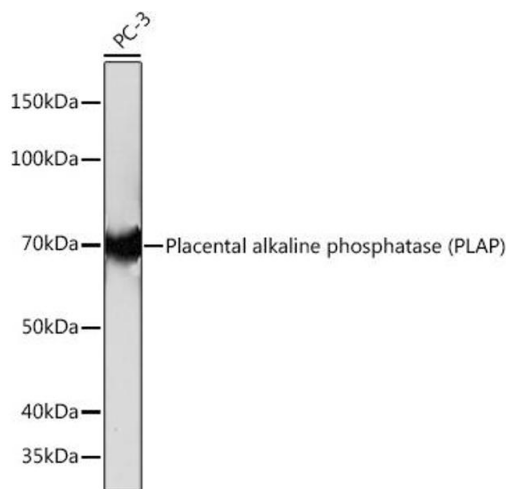
Storage: -20 °C

Storage Comment: Store at -20°C. Avoid freeze / thaw cycles.



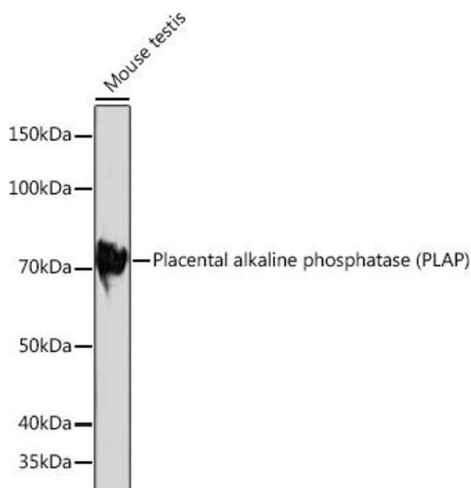
Immunohistochemistry

Image 1. Immunohistochemistry of paraffin-embedded Human placenta using Placental alkaline phosphatase (PLAP) antibody (ABIN1682693, ABIN7101664, ABIN7101665 and ABIN7101666) at dilution of 1:1000 (40x lens). Perform high pressure antigen retrieval with 10 mM Tris/EDTA buffer pH 9.0 before commencing with IHC staining protocol.



Western Blotting

Image 2. Western blot analysis of extracts of PC-3 cells, using Placental alkaline phosphatase (PLAP) Rabbit mAb (ABIN1682693, ABIN7101664, ABIN7101665 and ABIN7101666) at 1:1000 dilution. Secondary antibody: HRP Goat Anti-Rabbit IgG (H+L) (ABIN1684268 and ABIN3020597) at 1:10000 dilution. Lysates/proteins: 25 µg per lane. Blocking buffer: 3% nonfat dry milk in TBST. Detection: ECL Basic Kit (RM00020). Exposure time: 10s.



Western Blotting

Image 3. Western blot analysis of extracts of Mouse testis, using Placental alkaline phosphatase (PLAP) Rabbit mAb (ABIN1682693, ABIN7101664, ABIN7101665 and ABIN7101666) at 1:1000 dilution. Secondary antibody: HRP Goat Anti-Rabbit IgG (H+L) (ABIN1684268 and ABIN3020597) at 1:10000 dilution. Lysates/proteins: 25 µg per lane. Blocking buffer: 3% nonfat dry milk in TBST. Detection: ECL Basic Kit (RM00020). Exposure time: 3 min.