

Datasheet for ABIN7101668
anti-PPARGC1B antibody



[Go to Product page](#)

1 Image

Overview

Quantity:	20 µL
Target:	PPARGC1B
Reactivity:	Human
Host:	Rabbit
Clonality:	Monoclonal
Conjugate:	This PPARGC1B antibody is un-conjugated
Application:	Western Blotting (WB)

Product Details

Immunogen:	A synthesized peptide derived from human PGC1 beta
Isotype:	IgG
Cross-Reactivity:	Human, Mouse, Rat
Characteristics:	Monoclonal Antibodies
Purification:	Affinity purification

Target Details

Target:	PPARGC1B
Alternative Name:	PPARGC1B (PPARGC1B Products)
Background:	The protein encoded by this gene stimulates the activity of several transcription factors and nuclear receptors, including estrogen receptor alpha, nuclear respiratory factor 1, and

Target Details

glucocorticoid receptor. The encoded protein may be involved in fat oxidation, non-oxidative glucose metabolism, and the regulation of energy expenditure. This protein is downregulated in prediabetic and type 2 diabetes mellitus patients. Certain allelic variations in this gene increase the risk of the development of obesity. Three transcript variants encoding different isoforms have been found for this gene. [provided by RefSeq, Mar 2010],ERRL1, PERC, PGC-1(beta), PGC1B,Cardiovascular,Endocrine & Metabolism,Endocrine and metabolic diseases,Endocrine and metabolic diseases_Diabetes,Epigenetics & Nuclear Signaling,Lipids,Lipids_Fatty Acids,Mitochondrial metabolism,Mitochondrial metabolism_Mitochondrial markers,Nuclear Receptor Signaling,PPARGC1B

Molecular Weight: 113 kDa

Gene ID: 133522

UniProt: [Q86YN6](#)

Pathways: [AMPK Signaling](#), [Intracellular Steroid Hormone Receptor Signaling Pathway](#), [Regulation of Lipid Metabolism by PPARalpha](#)

Application Details

Application Notes: WB,1:500 - 1:2000

Restrictions: For Research Use only

Handling

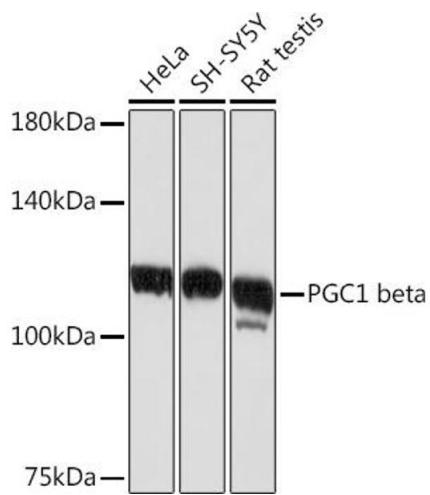
Buffer: PBS with 0.02 % sodium azide,0.05 % BSA,50 % glycerol, pH 7.3.

Preservative: Sodium azide

Precaution of Use: This product contains Sodium azide: a POISONOUS AND HAZARDOUS SUBSTANCE which should be handled by trained staff only.

Storage: -20 °C

Storage Comment: Store at -20°C. Avoid freeze / thaw cycles.



Western Blotting

Image 1. Western blot analysis of extracts of various cell lines, using PGC1 beta Rabbit mAb (ABIN1680494, ABIN3018825, ABIN3018826 and ABIN7101668) at 1:1000 dilution. Secondary antibody: HRP Goat Anti-Rabbit IgG (H+L) (ABIN1684268 and ABIN3020597) at 1:10000 dilution. Lysates/proteins: 25 μ g per lane. Blocking buffer: 3% nonfat dry milk in TBST. Detection: ECL Basic Kit (RM00020). Exposure time: 10s.