



Datasheet for ABIN7101671
anti-LYVE1 antibody



[Go to Product page](#)

1 Image

Overview

Quantity:	20 µL
Target:	LYVE1
Reactivity:	Human
Host:	Rabbit
Clonality:	Monoclonal
Conjugate:	This LYVE1 antibody is un-conjugated
Application:	Western Blotting (WB)

Product Details

Immunogen:	A synthesized peptide derived from human LYVE1
Isotype:	IgG
Cross-Reactivity:	Human, Mouse, Rat
Characteristics:	Monoclonal Antibodies
Purification:	Affinity purification

Target Details

Target:	LYVE1
Alternative Name:	LYVE1 (LYVE1 Products)
Background:	This gene encodes a type I integral membrane glycoprotein. The encoded protein acts as a receptor and binds to both soluble and immobilized hyaluronan. This protein may function in

Target Details

lymphatic hyaluronan transport and have a role in tumor metastasis. [provided by RefSeq, Jul 2008],CRSBP-1, HAR, LYVE-1, XLKD1,Cardiovascular,LYVE1

Molecular Weight: 35 kDa

Gene ID: 10894

UniProt: [Q9Y5Y7](#)

Pathways: [Glycosaminoglycan Metabolic Process](#)

Application Details

Application Notes: WB,1:500 - 1:2000

Restrictions: For Research Use only

Handling

Buffer: PBS with 0.02 % sodium azide,0.05 % BSA,50 % glycerol, pH 7.3.

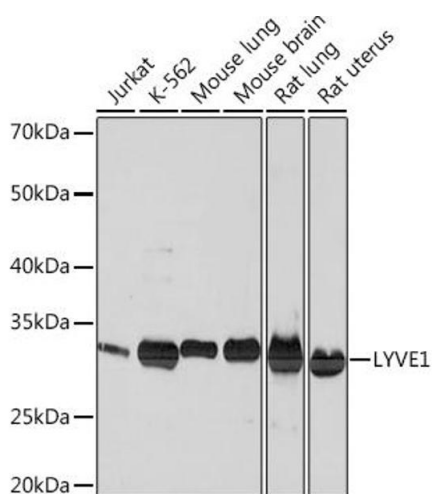
Preservative: Sodium azide

Precaution of Use: This product contains Sodium azide: a POISONOUS AND HAZARDOUS SUBSTANCE which should be handled by trained staff only.

Storage: -20 °C

Storage Comment: Store at -20°C. Avoid freeze / thaw cycles.

Images



Western Blotting

Image 1. Western blot analysis of extracts of various cell lines, using LYVE1 Rabbit mAb (ABIN1682995, ABIN3018843, ABIN3018844 and ABIN7101671) at 1:1000 dilution. Secondary antibody: HRP Goat Anti-Rabbit IgG (H+L) (ABIN1684268 and ABIN3020597) at 1:10000 dilution. Lysates/proteins: 25 µg per lane. Blocking buffer: 3 % nonfat dry milk in TBST. Detection: ECL Basic Kit (RM00020). Exposure time: 60s.