

Datasheet for ABIN7101675
anti-PPP1CB antibody



[Go to Product page](#)

6 Images

Overview

Quantity:	20 µL
Target:	PPP1CB
Reactivity:	Human
Host:	Rabbit
Clonality:	Monoclonal
Conjugate:	This PPP1CB antibody is un-conjugated
Application:	Western Blotting (WB), Immunohistochemistry (IHC), Immunofluorescence (IF)

Product Details

Immunogen:	A synthesized peptide derived from human PP1 beta
Isotype:	IgG
Cross-Reactivity:	Human, Mouse, Rat
Characteristics:	Monoclonal Antibodies
Purification:	Affinity purification

Target Details

Target:	PPP1CB
Alternative Name:	PPP1CB (PPP1CB Products)
Background:	The protein encoded by this gene is one of the three catalytic subunits of protein phosphatase 1 (PP1). PP1 is a serine/threonine specific protein phosphatase known to be involved in the

Target Details

regulation of a variety of cellular processes, such as cell division, glycogen metabolism, muscle contractility, protein synthesis, and HIV-1 viral transcription. Mouse studies suggest that PP1 functions as a suppressor of learning and memory. Two alternatively spliced transcript variants encoding distinct isoforms have been observed. [provided by RefSeq, Jul 2008],HEL-S-80p, PP-1B, PP1B, PP1beta, PPP1CD,Cancer,Endocrine & Metabolism,Epigenetics & Nuclear Signaling,Insulin Receptor Signaling Pathway,Lipid Metabolism,MAPK-Erk Signaling Pathway,Neurodegenerative Diseases,Neurodegenerative Diseases_Dopamine Signaling in Parkinsons Disease,Neuroscience,Signal Transduction,Translation Control,Translational Control_Regulation of eIF2,PPP1CB

Molecular Weight: 37 kDa

Gene ID: 5500

UniProt: [P62140](#)

Pathways: [M Phase](#), [Cellular Glucan Metabolic Process](#), [Regulation of Carbohydrate Metabolic Process](#), [Lipid Metabolism](#)

Application Details

Application Notes: WB,1:500 - 1:2000,IHC,1:50 - 1:200,IF,1:50 - 1:200

Restrictions: For Research Use only

Handling

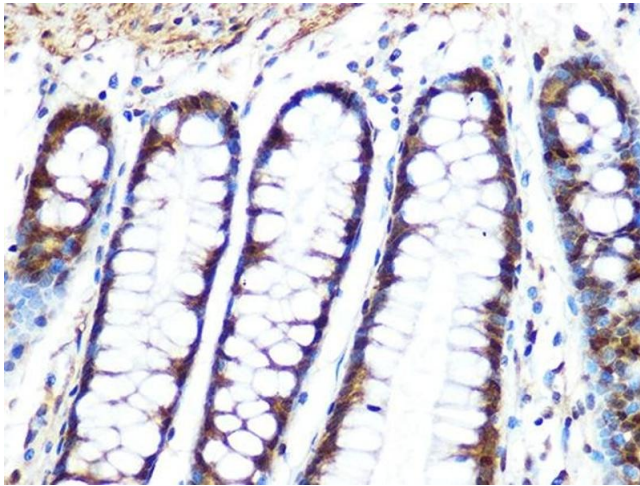
Buffer: PBS with 0.02 % sodium azide,0.05 % BSA,50 % glycerol, pH 7.3.

Preservative: Sodium azide

Precaution of Use: This product contains Sodium azide: a POISONOUS AND HAZARDOUS SUBSTANCE which should be handled by trained staff only.

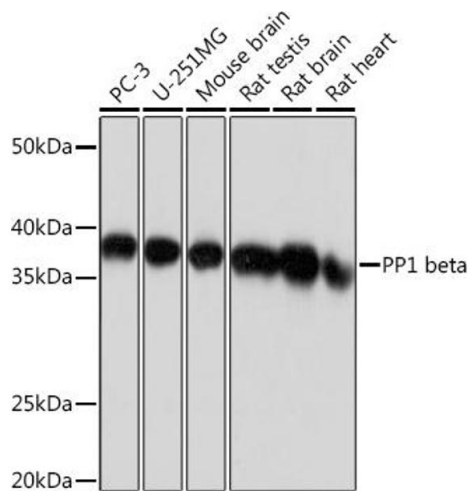
Storage: -20 °C

Storage Comment: Store at -20°C. Avoid freeze / thaw cycles.



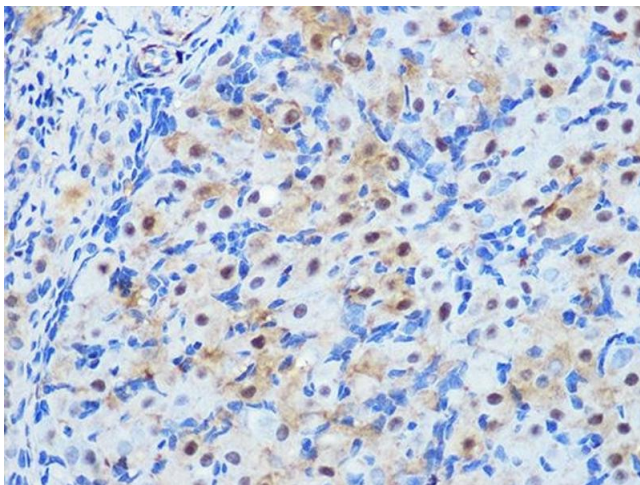
Immunohistochemistry

Image 1. Immunohistochemistry of paraffin-embedded human colon using PP1 beta Rabbit mAb (ABIN1679819, ABIN3018859, ABIN3018860 and ABIN7101675) at dilution of 1:100 (40x lens). Perform microwave antigen retrieval with 10 mM PBS buffer pH 7.2 before commencing with IHC staining protocol.



Western Blotting

Image 2. Western blot analysis of extracts of various cell lines, using PP1 beta Rabbit mAb (ABIN1679819, ABIN3018859, ABIN3018860 and ABIN7101675) at 1:1000 dilution. Secondary antibody: HRP Goat Anti-Rabbit IgG (H+L) (ABIN1684268 and ABIN3020597) at 1:10000 dilution. Lysates/proteins: 25 µg per lane. Blocking buffer: 3 % nonfat dry milk in TBST. Detection: ECL Basic Kit (RM00020). Exposure time: 1s.



Immunohistochemistry

Image 3. Immunohistochemistry of paraffin-embedded rat ovary using PP1 beta Rabbit mAb (ABIN1679819, ABIN3018859, ABIN3018860 and ABIN7101675) at dilution of 1:100 (40x lens). Perform microwave antigen retrieval with 10 mM PBS buffer pH 7.2 before commencing with IHC staining protocol.

Please check the [product details page](#) for more images. Overall 6 images are available for ABIN7101675.