

Datasheet for ABIN7101676

## anti-UQCRC2 antibody

3 Images



[Go to Product page](#)

### Overview

Quantity:	20 µL
Target:	UQCRC2
Reactivity:	Human
Host:	Rabbit
Clonality:	Monoclonal
Conjugate:	This UQCRC2 antibody is un-conjugated
Application:	Western Blotting (WB), Immunohistochemistry (IHC)

### Product Details

Immunogen:	A synthesized peptide derived from human UQCRC2
Isotype:	IgG
Cross-Reactivity:	Human, Mouse, Rat
Characteristics:	Monoclonal Antibodies
Purification:	Affinity purification

### Target Details

Target:	UQCRC2
Alternative Name:	UQCRC2 ( <a href="#">UQCRC2 Products</a> )
Background:	The protein encoded by this gene is located in the mitochondrion, where it is part of the ubiquinol-cytochrome c reductase complex (also known as complex III). This complex

## Target Details

constitutes a part of the mitochondrial respiratory chain. Defects in this gene are a cause of mitochondrial complex III deficiency nuclear type 5. [provided by RefSeq, Jul 2015],MC3DN5, QCR2, UQCR2,Cancer,Endocrine & Metabolism,Mitochondrial metabolism,Mitochondrial metabolism\_Mitochondrial markers,Mitochondrial metabolism\_Oxidative phosphorylation,Neurodegenerative Diseases,Neuroscience,Signal Transduction,UQCRC2

Molecular Weight: 48 kDa

Gene ID: 7385

UniProt: [P22695](#)

## Application Details

Application Notes: WB,1:500 - 1:2000,IHC,1:50 - 1:200

Restrictions: For Research Use only

## Handling

Buffer: PBS with 0.02 % sodium azide,0.05 % BSA,50 % glycerol, pH 7.3.

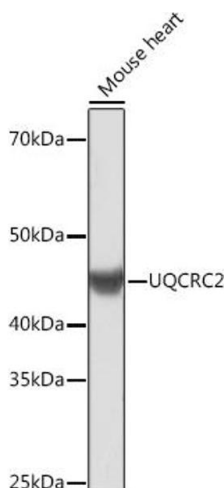
Preservative: Sodium azide

Precaution of Use: This product contains Sodium azide: a POISONOUS AND HAZARDOUS SUBSTANCE which should be handled by trained staff only.

Storage: -20 °C

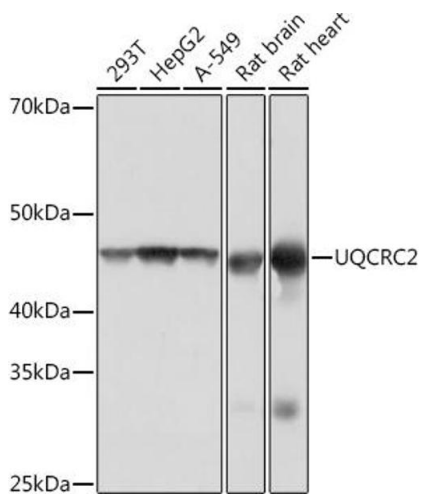
Storage Comment: Store at -20°C. Avoid freeze / thaw cycles.

## Images



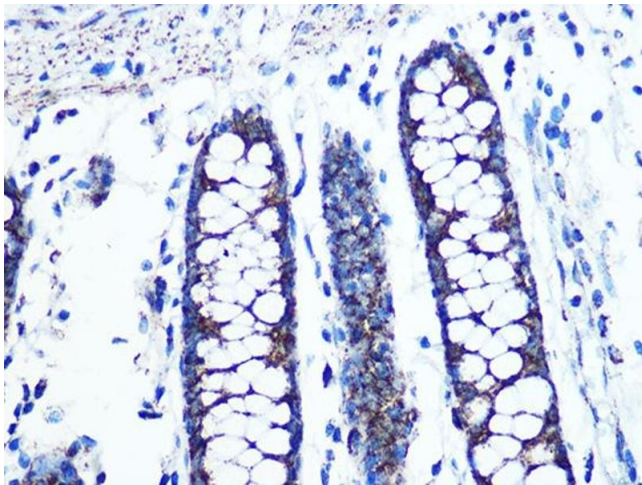
### Western Blotting

**Image 1.** Western blot analysis of extracts of Mouse heart, using UQCRC2 Rabbit mAb (ABIN1679334, ABIN3018863, ABIN3018864 and ABIN7101676) at 1:1000 dilution. Secondary antibody: HRP Goat Anti-Rabbit IgG (H+L) (ABIN1684268 and ABIN3020597) at 1:10000 dilution. Lysates/proteins: 25 µg per lane. Blocking buffer: 3 % nonfat dry milk in TBST. Detection: ECL Basic Kit (RM00020). Exposure time: 3 min.



### Western Blotting

**Image 2.** Western blot analysis of extracts of various cell lines, using UQCRC2 Rabbit mAb (ABIN1679334, ABIN3018863, ABIN3018864 and ABIN7101676) at 1:1000 dilution. Secondary antibody: HRP Goat Anti-Rabbit IgG (H+L) (ABIN1684268 and ABIN3020597) at 1:10000 dilution. Lysates/proteins: 25 µg per lane. Blocking buffer: 3 % nonfat dry milk in TBST. Detection: ECL Basic Kit (RM00020). Exposure time: 1s.



### Immunohistochemistry

**Image 3.** Immunohistochemistry of paraffin-embedded human colon using UQCRC2 Rabbit mAb (ABIN1679334, ABIN3018863, ABIN3018864 and ABIN7101676) at dilution of 1:100 (40x lens). Perform microwave antigen retrieval with 10 mM PBS buffer pH 7.2 before commencing with IHC staining protocol.