



[Go to Product page](#)

Datasheet for ABIN7101679

anti-DCLK1 antibody

2 Images

Overview

Quantity:	20 µL
Target:	DCLK1
Reactivity:	Human
Host:	Rabbit
Clonality:	Monoclonal
Conjugate:	This DCLK1 antibody is un-conjugated
Application:	Western Blotting (WB)

Product Details

Immunogen:	A synthesized peptide derived from human DCAMKL1/DCLK1
Isotype:	IgG
Cross-Reactivity:	Human, Mouse, Rat
Characteristics:	Monoclonal Antibodies
Purification:	Affinity purification

Target Details

Target:	DCLK1
Alternative Name:	DCLK1 (DCLK1 Products)
Background:	This gene encodes a member of the protein kinase superfamily and the doublecortin family. The protein encoded by this gene contains two N-terminal doublecortin domains, which bind

Target Details

microtubules and regulate microtubule polymerization, a C-terminal serine/threonine protein kinase domain, which shows substantial homology to Ca²⁺/calmodulin-dependent protein kinase, and a serine/proline-rich domain in between the doublecortin and the protein kinase domains, which mediates multiple protein-protein interactions. The microtubule-polymerizing activity of the encoded protein is independent of its protein kinase activity. The encoded protein is involved in several different cellular processes, including neuronal migration, retrograde transport, neuronal apoptosis and neurogenesis. This gene is up-regulated by brain-derived neurotrophic factor and associated with memory and general cognitive abilities. Multiple transcript variants generated by two alternative promoter usage and alternative splicing have been reported, but the full-length nature and biological validity of some variants have not been defined. These variants encode different isoforms, which are differentially expressed and have different kinase activities. [provided by RefSeq, Sep 2010], CL1, CLICK1, DCAMKL1, DCDC3A, DCLK, Kinase, Neuroscience, Signal Transduction, DCLK1

Molecular Weight: 82 kDa

Gene ID: 9201

UniProt: [015075](#)

Application Details

Application Notes: WB, 1:500 - 1:2000

Restrictions: For Research Use only

Handling

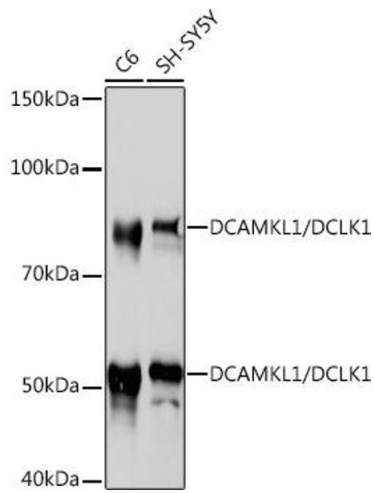
Buffer: PBS with 0.02 % sodium azide, 0.05 % BSA, 50 % glycerol, pH 7.3.

Preservative: Sodium azide

Precaution of Use: This product contains Sodium azide: a POISONOUS AND HAZARDOUS SUBSTANCE which should be handled by trained staff only.

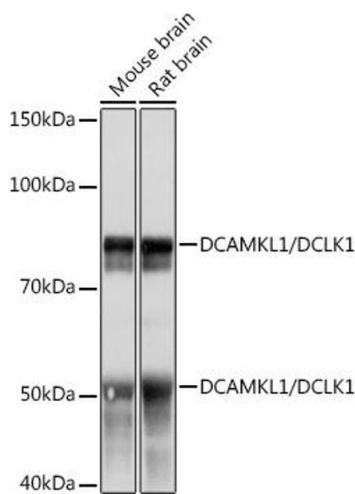
Storage: -20 °C

Storage Comment: Store at -20°C. Avoid freeze / thaw cycles.



Western Blotting

Image 1. Western blot analysis of extracts of various cell lines, using DC/DCLK1 Rabbit mAb (ABIN1678754, ABIN3018869, ABIN3018870 and ABIN7101679) at 1:1000 dilution. Secondary antibody: HRP Goat Anti-Rabbit IgG (H+L) (ABIN1684268 and ABIN3020597) at 1:10000 dilution. Lysates/proteins: 25 µg per lane. Blocking buffer: 3 % nonfat dry milk in TBST. Detection: ECL Basic Kit (RM00020). Exposure time: 30s.



Western Blotting

Image 2. Western blot analysis of extracts of various cell lines, using DC/DCLK1 Rabbit mAb (ABIN1678754, ABIN3018869, ABIN3018870 and ABIN7101679) at 1:1000 dilution. Secondary antibody: HRP Goat Anti-Rabbit IgG (H+L) (ABIN1684268 and ABIN3020597) at 1:10000 dilution. Lysates/proteins: 25 µg per lane. Blocking buffer: 3 % nonfat dry milk in TBST. Detection: ECL Basic Kit (RM00020). Exposure time: 1s.