



[Go to Product page](#)

Datasheet for ABIN7101680
anti-Stathmin 1 antibody

7 Images

Overview

Quantity:	20 µL
Target:	Stathmin 1 (STMN1)
Reactivity:	Human
Host:	Rabbit
Clonality:	Monoclonal
Conjugate:	This Stathmin 1 antibody is un-conjugated
Application:	Western Blotting (WB), Immunohistochemistry (IHC), Immunofluorescence (IF), Immunoprecipitation (IP)

Product Details

Immunogen:	A synthesized peptide derived from human Stathmin 1
Isotype:	IgG
Cross-Reactivity:	Human, Mouse, Rat
Characteristics:	Monoclonal Antibodies
Purification:	Affinity purification

Target Details

Target:	Stathmin 1 (STMN1)
Alternative Name:	STMN1 (STMN1 Products)
Background:	This gene belongs to the stathmin family of genes. It encodes a ubiquitous cytosolic

Target Details

phosphoprotein proposed to function as an intracellular relay integrating regulatory signals of the cellular environment. The encoded protein is involved in the regulation of the microtubule filament system by destabilizing microtubules. It prevents assembly and promotes disassembly of microtubules. Multiple transcript variants encoding different isoforms have been found for this gene. [provided by RefSeq, Feb 2009],C1orf215, LAP18, Lag, OP18, PP17, PP19, PR22, SMN,Apoptosis,Cell Adhesion,Cell Biology & Developmental Biology,Cytoskeleton,Cytoskeleton_Microtubules,Neurodegenerative Diseases,Neurodegenerative Diseases_Amyloid Plaque and Neurofibrillary Tangle Formation in Alzheimers Disease,Neuroscience,Protein phosphorylation,Signal Transduction,STMN1

Molecular Weight: 18 kDa

Gene ID: 3925

UniProt: [P16949](#)

Pathways: [MAPK Signaling](#), [Microtubule Dynamics](#)

Application Details

Application Notes: WB,1:500 - 1:2000,IHC,1:50 - 1:200,IF,1:50 - 1:200,IP,1:50 - 1:200

Restrictions: For Research Use only

Handling

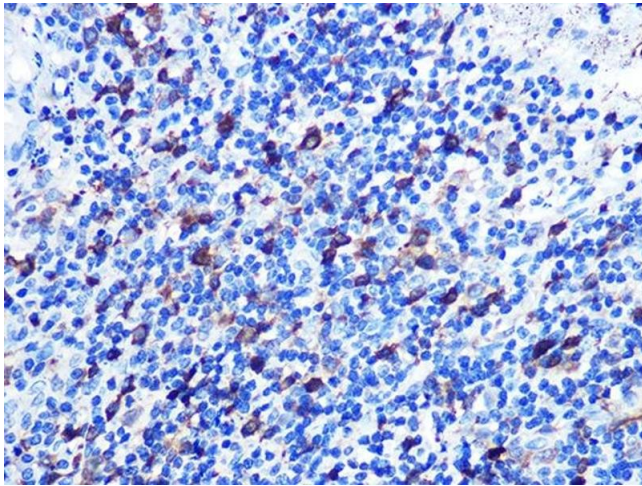
Buffer: PBS with 0.02 % sodium azide,0.05 % BSA,50 % glycerol, pH 7.3.

Preservative: Sodium azide

Precaution of Use: This product contains Sodium azide: a POISONOUS AND HAZARDOUS SUBSTANCE which should be handled by trained staff only.

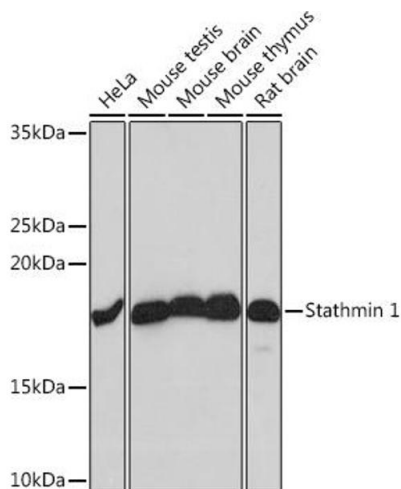
Storage: -20 °C

Storage Comment: Store at -20°C. Avoid freeze / thaw cycles.



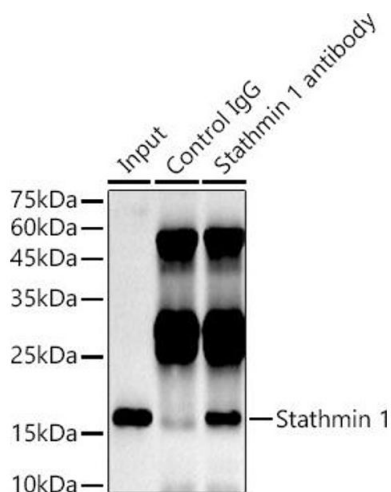
Immunohistochemistry

Image 1. Immunohistochemistry of paraffin-embedded human appendix using Stathmin 1 Rabbit mAb (ABIN1678518, ABIN3018873, ABIN3018874 and ABIN7101680) at dilution of 1:100 (40x lens). Perform microwave antigen retrieval with 10 mM PBS buffer pH 7.2 before commencing with IHC staining protocol.



Western Blotting

Image 2. Western blot analysis of extracts of various cell lines, using Stathmin 1 Rabbit mAb (ABIN1678518, ABIN3018873, ABIN3018874 and ABIN7101680) at 1:1000 dilution. Secondary antibody: HRP Goat Anti-Rabbit IgG (H+L) (ABIN1684268 and ABIN3020597) at 1:10000 dilution. Lysates/proteins: 25 µg per lane. Blocking buffer: 3 % nonfat dry milk in TBST. Detection: ECL Basic Kit (RM00020). Exposure time: 10s.



Immunoprecipitation

Image 3. Immunoprecipitation analysis of 300 µg extracts of HeLa cells using 3 µg Stathmin 1 antibody (ABIN1678518, ABIN3018873, ABIN3018874 and ABIN7101680). Western blot was performed from the immunoprecipitate using Stathmin 1 antibody (ABIN1678518, ABIN3018873, ABIN3018874 and ABIN7101680) at a dilution of 1:1000.

Please check the [product details page](#) for more images. Overall 7 images are available for ABIN7101680.