



[Go to Product page](#)

Datasheet for ABIN7101681

anti-CLEC3B antibody

3 Images

Overview

Quantity:	20 µL
Target:	CLEC3B
Reactivity:	Human
Host:	Rabbit
Clonality:	Monoclonal
Conjugate:	This CLEC3B antibody is un-conjugated
Application:	Western Blotting (WB), Immunofluorescence (IF)

Product Details

Immunogen:	A synthesized peptide derived from human CLEC3B/CLEC3B/Tetranectin
Isotype:	IgG
Cross-Reactivity:	Human, Mouse, Rat
Characteristics:	Monoclonal Antibodies
Purification:	Affinity purification

Target Details

Target:	CLEC3B
Alternative Name:	CLEC3B (CLEC3B Products)
Background:	Tetranectin binds to plasminogen and to isolated kringle 4. May be involved in the packaging of molecules destined for exocytosis.,TN, TNA,Blood,Blood_Serum Proteins,Cardiovascular,Cell

Target Details

Biology & Developmental Biology,Cytoskeleton,Extracellular Matrix,Extracellular Matrix_Bone,Signal Transduction,CLEC3B

Molecular Weight: 23 kDa

Gene ID: 7123

UniProt: [P05452](#)

Application Details

Application Notes: WB,1:500 - 1:2000,IF,1:50 - 1:200

Restrictions: For Research Use only

Handling

Buffer: PBS with 0.02 % sodium azide,0.05 % BSA,50 % glycerol, pH 7.3.

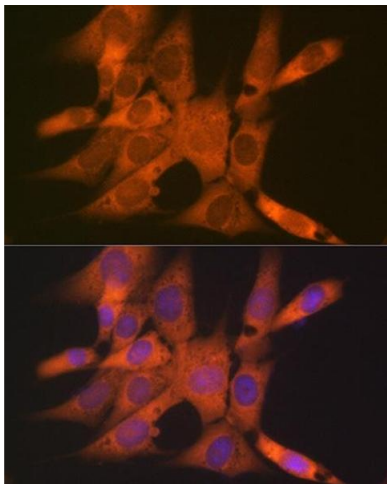
Preservative: Sodium azide

Precaution of Use: This product contains Sodium azide: a POISONOUS AND HAZARDOUS SUBSTANCE which should be handled by trained staff only.

Storage: -20 °C

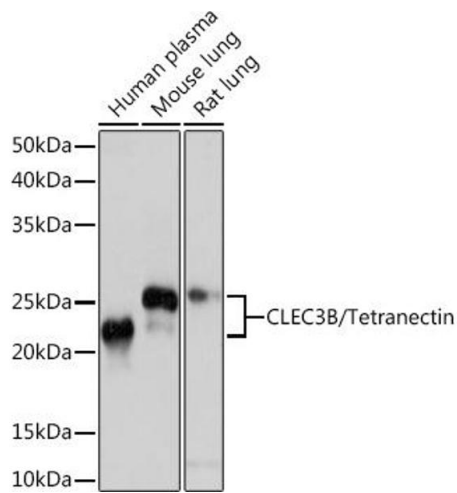
Storage Comment: Store at -20°C. Avoid freeze / thaw cycles.

Images



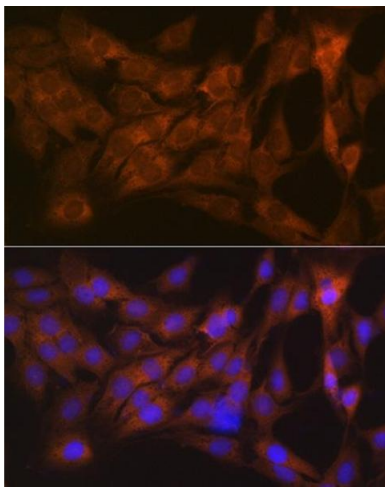
Immunofluorescence

Image 1. Immunofluorescence analysis of NIH-3T3 cells using CLEC3B/CLEC3B/Tetranectin Rabbit mAb (ABIN1679326, ABIN3018879, ABIN3018880 and ABIN7101681) at dilution of 1:100 (40x lens). Blue: DAPI for nuclear staining.



Western Blotting

Image 2. Western blot analysis of extracts of various cell lines, using CLEC3B/CLEC3B/Tetranectin Rabbit mAb (ABIN1679326, ABIN3018879, ABIN3018880 and ABIN7101681) at 1:1000 dilution. Secondary antibody: HRP Goat Anti-Rabbit IgG (H+L) (ABIN1684268 and ABIN3020597) at 1:10000 dilution. Lysates/proteins: 25 µg per lane. Blocking buffer: 3% nonfat dry milk in TBST. Detection: ECL Basic Kit (RM00020). Exposure time: 10s.



Immunofluorescence

Image 3. Immunofluorescence analysis of C6 cells using CLEC3B/CLEC3B/Tetranectin Rabbit mAb (ABIN1679326, ABIN3018879, ABIN3018880 and ABIN7101681) at dilution of 1:100 (40x lens). Blue: DAPI for nuclear staining.