



Datasheet for ABIN7101684
anti-alpha Adaptin antibody



[Go to Product page](#)

3 Images

Overview

Quantity:	20 µL
Target:	alpha Adaptin (AP2A1)
Reactivity:	Human
Host:	Rabbit
Clonality:	Monoclonal
Conjugate:	This alpha Adaptin antibody is un-conjugated
Application:	Western Blotting (WB), Immunofluorescence (IF)

Product Details

Immunogen:	A synthesized peptide derived from human AP2A1
Isotype:	IgG
Cross-Reactivity:	Human, Mouse, Rat
Characteristics:	Monoclonal Antibodies
Purification:	Affinity purification

Target Details

Target:	alpha Adaptin (AP2A1)
Alternative Name:	AP2A1 (AP2A1 Products)
Background:	This gene encodes the alpha 1 adaptin subunit of the adaptor protein 2 (AP-2) complex found in clathrin coated vesicles. The AP-2 complex is a heterotetramer consisting of two large adaptins

Target Details

(alpha or beta), a medium adaptin (mu), and a small adaptin (sigma). The complex is part of the protein coat on the cytoplasmic face of coated vesicles which links clathrin to receptors in vesicles. Alternative splicing of this gene results in two transcript variants encoding two different isoforms. A third transcript variant has been described, but its full length nature has not been determined. [provided by RefSeq, Jul 2008],ADTAA, AP2-ALPHA, CLAPA1,Cell Biology & Developmental Biology,Neurodegenerative Diseases,Neuroscience,Notch Signaling Pathway,Signal Transduction,AP2A1

Molecular Weight: 108 kDa

Gene ID: 160

UniProt: [O95782](#)

Pathways: [Notch Signaling](#), [EGFR Signaling Pathway](#), [Neurotrophin Signaling Pathway](#), [EGFR Downregulation](#)

Application Details

Application Notes: WB,1:500 - 1:2000,IF,1:50 - 1:200

Restrictions: For Research Use only

Handling

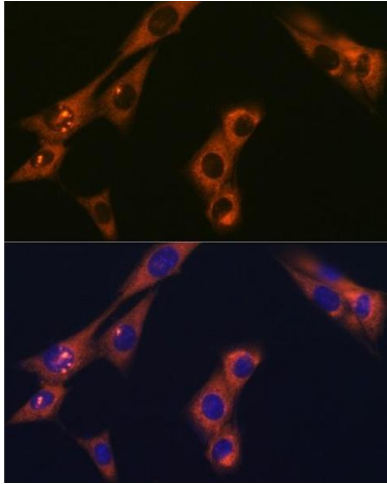
Buffer: PBS with 0.02 % sodium azide,0.05 % BSA,50 % glycerol, pH 7.3.

Preservative: Sodium azide

Precaution of Use: This product contains Sodium azide: a POISONOUS AND HAZARDOUS SUBSTANCE which should be handled by trained staff only.

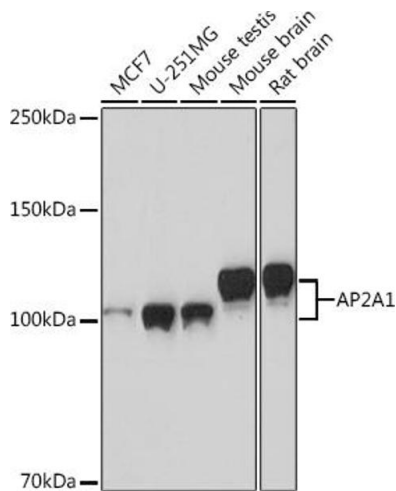
Storage: -20 °C

Storage Comment: Store at -20°C. Avoid freeze / thaw cycles.



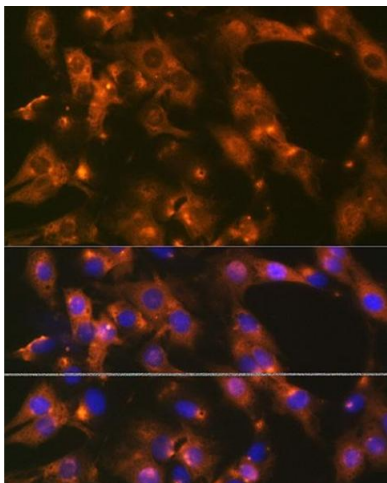
Immunofluorescence

Image 1. Immunofluorescence analysis of NIH-3T3 cells using Rabbit mAb (ABIN1681069, ABIN3018897, ABIN3018898 and ABIN7101684) at dilution of 1:100 (40x lens). Blue: DAPI for nuclear staining.



Western Blotting

Image 2. Western blot analysis of extracts of various cell lines, using Rabbit mAb (ABIN1681069, ABIN3018897, ABIN3018898 and ABIN7101684) at 1:1000 dilution. Secondary antibody: HRP Goat Anti-Rabbit IgG (H+L) (ABIN1684268 and ABIN3020597) at 1:10000 dilution. Lysates/proteins: 25 µg per lane. Blocking buffer: 3 % nonfat dry milk in TBST. Detection: ECL Basic Kit (RM00020). Exposure time: 90s.



Immunofluorescence

Image 3. Immunofluorescence analysis of C6 cells using Rabbit mAb (ABIN1681069, ABIN3018897, ABIN3018898 and ABIN7101684) at dilution of 1:100 (40x lens). Blue: DAPI for nuclear staining.