



[Go to Product page](#)

Datasheet for ABIN7101689

## anti-COMT antibody

### 2 Images

#### Overview

Quantity:	20 µL
Target:	COMT
Reactivity:	Human
Host:	Rabbit
Clonality:	Monoclonal
Conjugate:	This COMT antibody is un-conjugated
Application:	Western Blotting (WB)

#### Product Details

Immunogen:	A synthesized peptide derived from human COMT
Isotype:	IgG
Cross-Reactivity:	Human, Rat
Characteristics:	Monoclonal Antibodies
Purification:	Affinity purification

#### Target Details

Target:	COMT
Alternative Name:	COMT ( <a href="#">COMT Products</a> )
Background:	Catechol-O-methyltransferase catalyzes the transfer of a methyl group from S-adenosylmethionine to catecholamines, including the neurotransmitters dopamine, epinephrine,

## Target Details

---

and norepinephrine. This O-methylation results in one of the major degradative pathways of the catecholamine transmitters. In addition to its role in the metabolism of endogenous substances, COMT is important in the metabolism of catechol drugs used in the treatment of hypertension, asthma, and Parkinson disease. COMT is found in two forms in tissues, a soluble form (S-COMT) and a membrane-bound form (MB-COMT). The differences between S-COMT and MB-COMT reside within the N-termini. Several transcript variants are formed through the use of alternative translation initiation sites and promoters. [provided by RefSeq, Sep 2008],HEL-S-98n,Drug metabolism,Endocrine & Metabolism,Epigenetics & Nuclear Signaling,Neurodegenerative Diseases,Neurodegenerative Diseases\_Dopamine Signaling in Parkinsons Disease,Neuroscience,Signal Transduction,COMT

---

Molecular Weight: 24,28 kDa

---

Gene ID: 1312

---

UniProt: [P21964](#)

---

Pathways: [Steroid Hormone Biosynthesis](#), [SARS-CoV-2 Protein Interactome](#)

## Application Details

---

---

Application Notes: WB,1:500 - 1:2000

---

Restrictions: For Research Use only

## Handling

---

---

Buffer: PBS with 0.02 % sodium azide,0.05 % BSA,50 % glycerol, pH 7.3.

---

Preservative: Sodium azide

---

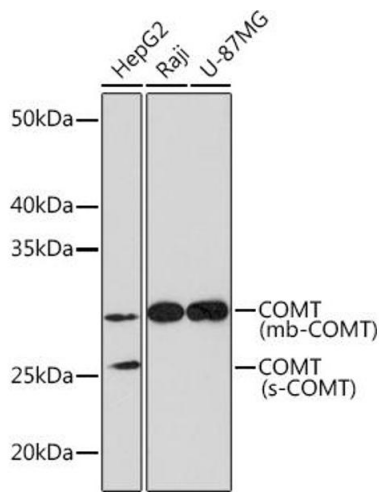
Precaution of Use: This product contains Sodium azide: a POISONOUS AND HAZARDOUS SUBSTANCE which should be handled by trained staff only.

---

Storage: -20 °C

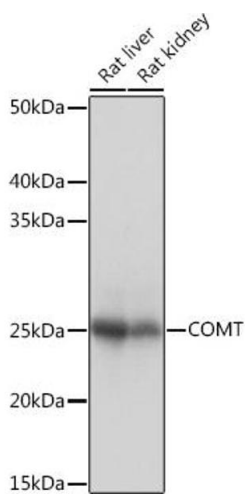
---

Storage Comment: Store at -20°C. Avoid freeze / thaw cycles.



### Western Blotting

**Image 1.** Western blot analysis of extracts of various cell lines, using COMT Rabbit mAb (ABIN1682443, ABIN3018925, ABIN3018926 and ABIN7101689) at 1:1000 dilution. Secondary antibody: HRP Goat Anti-Rabbit IgG (H+L) (ABIN1684268 and ABIN3020597) at 1:10000 dilution. Lysates/proteins: 25 µg per lane. Blocking buffer: 3 % nonfat dry milk in TBST. Detection: ECL Basic Kit (RM00020). Exposure time: 10s.



### Western Blotting

**Image 2.** Western blot analysis of extracts of various cell lines, using COMT Rabbit mAb (ABIN1682443, ABIN3018925, ABIN3018926 and ABIN7101689) at 1:1000 dilution. Secondary antibody: HRP Goat Anti-Rabbit IgG (H+L) (ABIN1684268 and ABIN3020597) at 1:10000 dilution. Lysates/proteins: 25 µg per lane. Blocking buffer: 3 % nonfat dry milk in TBST. Detection: ECL Basic Kit (RM00020). Exposure time: 1s.