



[Go to Product page](#)

Datasheet for ABIN7101692

anti-SENP1 antibody

1 Image

Overview

| | |
|--------------|--------------------------------------|
| Quantity: | 20 µL |
| Target: | SENP1 |
| Reactivity: | Human |
| Host: | Rabbit |
| Clonality: | Monoclonal |
| Conjugate: | This SENP1 antibody is un-conjugated |
| Application: | Western Blotting (WB) |

Product Details

| | |
|-------------------|--|
| Immunogen: | A synthesized peptide derived from human SENP1 |
| Isotype: | IgG |
| Cross-Reactivity: | Human |
| Characteristics: | Monoclonal Antibodies |
| Purification: | Affinity purification |

Target Details

| | |
|-------------------|--|
| Target: | SENP1 |
| Alternative Name: | SENP1 (SENP1 Products) |
| Background: | This gene encodes a cysteine protease that specifically targets members of the small ubiquitin-like modifier (SUMO) protein family. This protease regulates SUMO pathways by deconjugating |

Target Details

sumoylated proteins. This protease also functions to process the precursor SUMO proteins into their mature form. Alternate splicing results in multiple transcript variants. [provided by RefSeq, Jun 2012],SuPr-2,Cell Biology & Developmental Biology,Epigenetics & Nuclear Signaling,Ubiquitin,SEN1

Molecular Weight: 73 kDa

Gene ID: 29843

UniProt: [Q9P0U3](#)

Pathways: [Positive Regulation of Endopeptidase Activity](#)

Application Details

Application Notes: WB,1:500 - 1:2000

Restrictions: For Research Use only

Handling

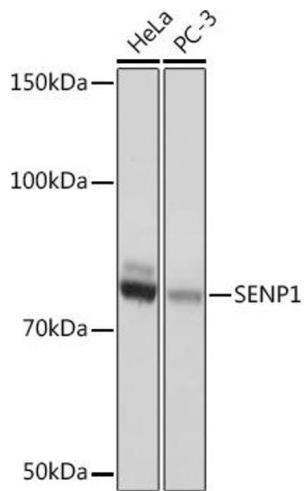
Buffer: PBS with 0.02 % sodium azide,0.05 % BSA,50 % glycerol, pH 7.3.

Preservative: Sodium azide

Precaution of Use: This product contains Sodium azide: a POISONOUS AND HAZARDOUS SUBSTANCE which should be handled by trained staff only.

Storage: -20 °C

Storage Comment: Store at -20°C. Avoid freeze / thaw cycles.



Western Blotting

Image 1. Western blot analysis of extracts of various cell lines, using SENP1 Rabbit mAb (ABIN1680747, ABIN7101692, ABIN7101693 and ABIN7101694) at 1:1000 dilution. Secondary antibody: HRP Goat Anti-Rabbit IgG (H+L) (ABIN1684268 and ABIN3020597) at 1:10000 dilution. Lysates/proteins: 25 μ g per lane. Blocking buffer: 3% nonfat dry milk in TBST. Detection: ECL Basic Kit (RM00020). Exposure time: 1s.