

Datasheet for ABIN7101694
anti-SENP1 antibody



[Go to Product page](#)

1 Image

Overview

Quantity:	500 µL
Target:	SENP1
Reactivity:	Human
Host:	Rabbit
Clonality:	Monoclonal
Conjugate:	This SENP1 antibody is un-conjugated
Application:	Western Blotting (WB)

Product Details

Immunogen:	A synthesized peptide derived from human SENP1
Isotype:	IgG
Cross-Reactivity:	Human
Characteristics:	Monoclonal Antibodies
Purification:	Affinity purification

Target Details

Target:	SENP1
Alternative Name:	SENP1 (SENP1 Products)
Background:	This gene encodes a cysteine protease that specifically targets members of the small ubiquitin-like modifier (SUMO) protein family. This protease regulates SUMO pathways by deconjugating

Target Details

sumoylated proteins. This protease also functions to process the precursor SUMO proteins into their mature form. Alternate splicing results in multiple transcript variants. [provided by RefSeq, Jun 2012],SuPr-2,Cell Biology & Developmental Biology,Epigenetics & Nuclear Signaling,Ubiquitin,SENP1

Molecular Weight: 73 kDa

Gene ID: 29843

UniProt: [Q9P0U3](#)

Pathways: [Positive Regulation of Endopeptidase Activity](#)

Application Details

Application Notes: WB,1:500 - 1:2000

Restrictions: For Research Use only

Handling

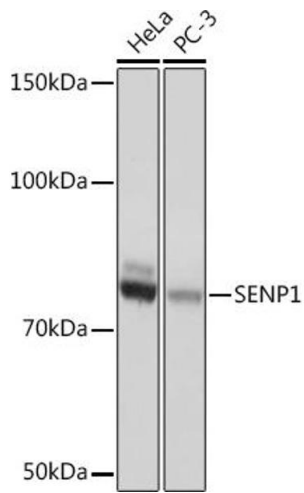
Buffer: PBS with 0.02 % sodium azide,0.05 % BSA,50 % glycerol, pH 7.3.

Preservative: Sodium azide

Precaution of Use: This product contains Sodium azide: a POISONOUS AND HAZARDOUS SUBSTANCE which should be handled by trained staff only.

Storage: -20 °C

Storage Comment: Store at -20°C. Avoid freeze / thaw cycles.



Western Blotting

Image 1. Western blot analysis of extracts of various cell lines, using SENP1 Rabbit mAb (ABIN1680747, ABIN7101692, ABIN7101693 and ABIN7101694) at 1:1000 dilution. Secondary antibody: HRP Goat Anti-Rabbit IgG (H+L) (ABIN1684268 and ABIN3020597) at 1:10000 dilution. Lysates/proteins: 25 µg per lane. Blocking buffer: 3 % nonfat dry milk in TBST. Detection: ECL Basic Kit (RM00020). Exposure time: 1s.