



[Go to Product page](#)

Datasheet for ABIN7101698

anti-CSNK2B antibody

6 Images

Overview

Quantity:	20 µL
Target:	CSNK2B
Reactivity:	Human
Host:	Rabbit
Clonality:	Monoclonal
Conjugate:	This CSNK2B antibody is un-conjugated
Application:	Western Blotting (WB), Immunohistochemistry (IHC), Immunofluorescence (IF)

Product Details

Immunogen:	A synthesized peptide derived from human Casein Kinase 2 beta (CSNK2B) (CSNK2B)
Isotype:	IgG
Cross-Reactivity:	Human, Mouse, Rat
Characteristics:	Monoclonal Antibodies
Purification:	Affinity purification

Target Details

Target:	CSNK2B
Alternative Name:	CSNK2B (CSNK2B Products)
Background:	This gene encodes the beta subunit of casein kinase II, a ubiquitous protein kinase which regulates metabolic pathways, signal transduction, transcription, translation, and replication.

Target Details

The enzyme is composed of three subunits, alpha, alpha prime and beta, which form a tetrameric holoenzyme. The alpha and alpha prime subunits are catalytic, while the beta subunit serves regulatory functions. The enzyme localizes to the endoplasmic reticulum and the Golgi apparatus. Two transcript variants encoding different isoforms have been found for this gene. [provided by RefSeq, Sep 2013],CK2B, CK2N, CSK2B, G5A,Cell Biology & Developmental Biology,Cell Cycle,Kinase,Signal Transduction,Stem Cells,CSNK2B

Molecular Weight: 25 kDa

Gene ID: 1460

UniProt: [P67870](#)

Pathways: [SARS-CoV-2 Protein Interactome](#)

Application Details

Application Notes: WB,1:500 - 1:2000,IHC,1:50 - 1:200,IF,1:50 - 1:200

Restrictions: For Research Use only

Handling

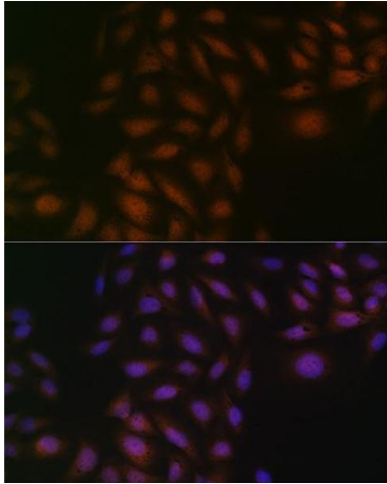
Buffer: PBS with 0.02 % sodium azide,0.05 % BSA,50 % glycerol, pH 7.3.

Preservative: Sodium azide

Precaution of Use: This product contains Sodium azide: a POISONOUS AND HAZARDOUS SUBSTANCE which should be handled by trained staff only.

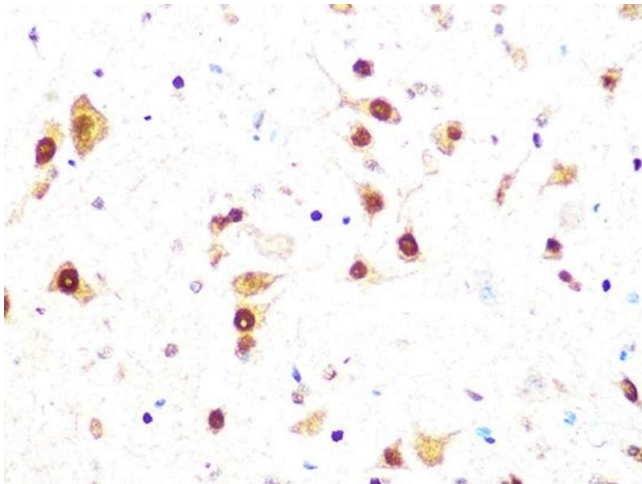
Storage: -20 °C

Storage Comment: Store at -20°C. Avoid freeze / thaw cycles.



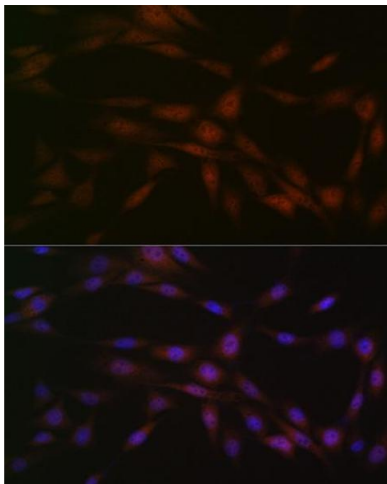
Immunofluorescence

Image 1. Immunofluorescence analysis of U-2 OS cells using Casein Kinase 2 beta (CSNK2B) (CSNK2B) Rabbit mAb (ABIN1680593, ABIN3019007, ABIN3019008 and ABIN7101698) at dilution of 1:100 (40x lens). Blue: DAPI for nuclear staining.



Immunohistochemistry

Image 2. Immunohistochemistry of paraffin-embedded mouse spinal cord using Casein Kinase 2 beta (CSNK2B) (CSNK2B) Rabbit mAb (ABIN1680593, ABIN3019007, ABIN3019008 and ABIN7101698) at dilution of 1:100 (40x lens). Perform microwave antigen retrieval with 10 mM PBS buffer pH 7.2 before commencing with IHC staining protocol.



Immunofluorescence

Image 3. Immunofluorescence analysis of NIH-3T3 cells using Casein Kinase 2 beta (CSNK2B) (CSNK2B) Rabbit mAb (ABIN1680593, ABIN3019007, ABIN3019008 and ABIN7101698) at dilution of 1:100 (40x lens). Blue: DAPI for nuclear staining.

Please check the [product details page](#) for more images. Overall 6 images are available for ABIN7101698.