



[Go to Product page](#)

Datasheet for ABIN7101700

anti-STAT4 antibody

4 Images

Overview

Quantity:	20 µL
Target:	STAT4
Reactivity:	Human
Host:	Rabbit
Clonality:	Monoclonal
Conjugate:	This STAT4 antibody is un-conjugated
Application:	Western Blotting (WB), Immunoprecipitation (IP), Immunofluorescence (IF)

Product Details

Immunogen:	A synthesized peptide derived from human STAT4
Isotype:	IgG
Cross-Reactivity:	Human, Mouse, Rat
Characteristics:	Monoclonal Antibodies
Purification:	Affinity purification

Target Details

Target:	STAT4
Alternative Name:	STAT4 (STAT4 Products)
Background:	The protein encoded by this gene is a member of the STAT family of transcription factors. In response to cytokines and growth factors, STAT family members are phosphorylated by the

Target Details

receptor associated kinases, and then form homo- or heterodimers that translocate to the cell nucleus where they act as transcription activators. This protein is essential for mediating responses to IL12 in lymphocytes, and regulating the differentiation of T helper cells. Mutations in this gene may be associated with systemic lupus erythematosus and rheumatoid arthritis. Alternate splicing results in multiple transcript variants that encode the same protein. [provided by RefSeq, Aug 2011],SLEB11,Epigenetics & Nuclear Signaling,ErbB-HER Signaling Pathway,IL-6 Receptor Signaling Pathway,Immunology & Inflammation,Protein phosphorylation,Signal Transduction,Transcription Factors,STAT4

Molecular Weight: 86 kDa

Gene ID: 6775

UniProt: [Q14765](#)

Pathways: [JAK-STAT Signaling](#)

Application Details

Application Notes: WB,1:500 - 1:2000,IF,1:50 - 1:200,IP,1:50 - 1:200

Restrictions: For Research Use only

Handling

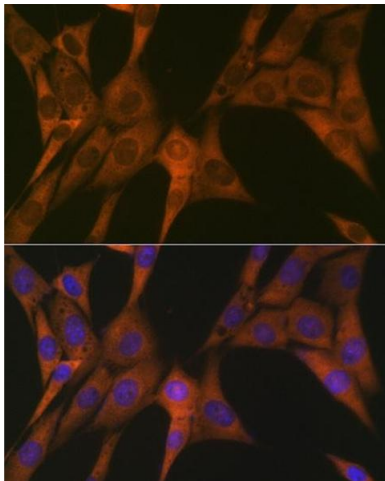
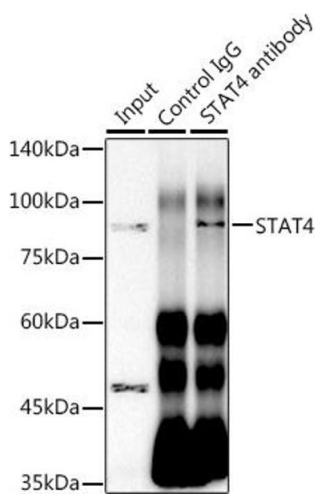
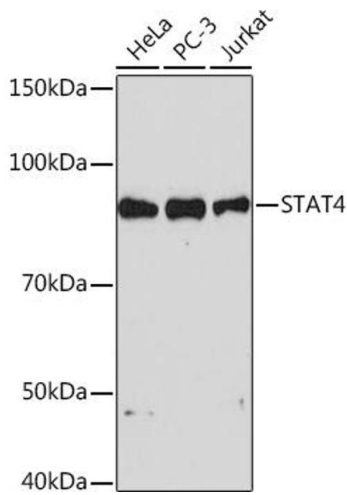
Buffer: PBS with 0.02 % sodium azide,0.05 % BSA,50 % glycerol, pH 7.3.

Preservative: Sodium azide

Precaution of Use: This product contains Sodium azide: a POISONOUS AND HAZARDOUS SUBSTANCE which should be handled by trained staff only.

Storage: -20 °C

Storage Comment: Store at -20°C. Avoid freeze / thaw cycles.



Western Blotting

Image 1. Western blot analysis of extracts of various cell lines, using ST Rabbit mAb (ABIN1681118, ABIN7101700, ABIN7101701 and ABIN7101702) at 1:1000 dilution. Secondary antibody: HRP Goat Anti-Rabbit IgG (H+L) (ABIN1684268 and ABIN3020597) at 1:10000 dilution. Lysates/proteins: 25 µg per lane. Blocking buffer: 3 % nonfat dry milk in TBST. Detection: ECL Basic Kit (RM00020). Exposure time: 90s.

Immunoprecipitation

Image 2. Immunoprecipitation analysis of 300 µg extracts of HeLa cells using 3 µg ST antibody (ABIN1681118, ABIN7101700, ABIN7101701 and ABIN7101702). Western blot was performed from the immunoprecipitate using ST antibody (ABIN1681118, ABIN7101700, ABIN7101701 and ABIN7101702) at a dilution of 1:1000.

Immunofluorescence

Image 3. Immunofluorescence analysis of NIH-3T3 cells using ST Rabbit mAb (ABIN1681118, ABIN7101700, ABIN7101701 and ABIN7101702) at dilution of 1:100 (40x lens). Blue: DAPI for nuclear staining.

Please check the [product details page](#) for more images. Overall 4 images are available for ABIN7101700.