



[Go to Product page](#)

Datasheet for ABIN7101703

anti-FMR1 antibody

3 Images

Overview

Quantity:	20 µL
Target:	FMR1
Reactivity:	Human
Host:	Rabbit
Clonality:	Monoclonal
Conjugate:	This FMR1 antibody is un-conjugated
Application:	Western Blotting (WB), Immunohistochemistry (IHC)

Product Details

Immunogen:	A synthesized peptide derived from human FMRP
Isotype:	IgG
Cross-Reactivity:	Human, Mouse, Rat
Characteristics:	Monoclonal Antibodies
Purification:	Affinity purification

Target Details

Target:	FMR1
Alternative Name:	FMR1 (FMR1 Products)
Background:	The protein encoded by this gene binds RNA and is associated with polysomes. The encoded protein may be involved in mRNA trafficking from the nucleus to the cytoplasm. A trinucleotide

Target Details

repeat (CGG) in the 5' UTR is normally found at 6-53 copies, but an expansion to 55-230 repeats is the cause of fragile X syndrome. Expansion of the trinucleotide repeat may also cause one form of premature ovarian failure (POF1). Multiple alternatively spliced transcript variants that encode different protein isoforms and which are located in different cellular locations have been described for this gene. [provided by RefSeq, May 2010],FMRP, FRAXA, POF, POF1,Cell Type Marker,Cell Type Marker_Dendrite marker,Cell Type Marker_Neuron marker,Cell Type Marker_Synapse marker,Epigenetics & Nuclear Signaling,Neurodegenerative Diseases,Neuroscience,RNA Binding,FMR1

Molecular Weight: 58 kDa/61 kDa/66 kDa/68 kDa/69 kDa/70 kDa/71 kDa

Gene ID: 2332

UniProt: [Q06787](#)

Pathways: [Regulation of Muscle Cell Differentiation, Skeletal Muscle Fiber Development](#)

Application Details

Application Notes: WB,1:500 - 1:2000,IHC,1:50 - 1:200

Restrictions: For Research Use only

Handling

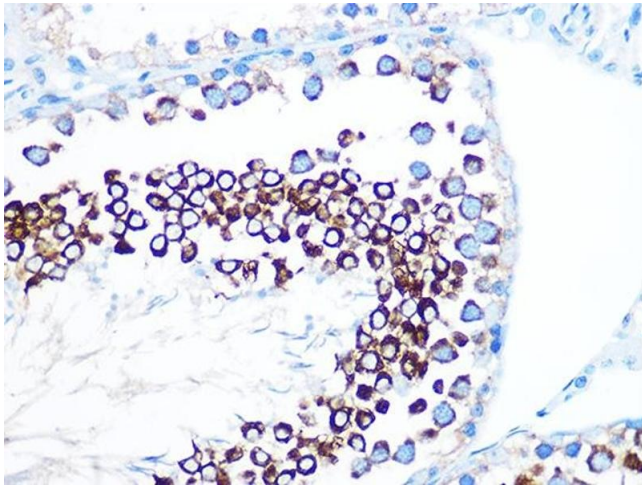
Buffer: PBS with 0.02 % sodium azide,0.05 % BSA,50 % glycerol, pH 7.3.

Preservative: Sodium azide

Precaution of Use: This product contains Sodium azide: a POISONOUS AND HAZARDOUS SUBSTANCE which should be handled by trained staff only.

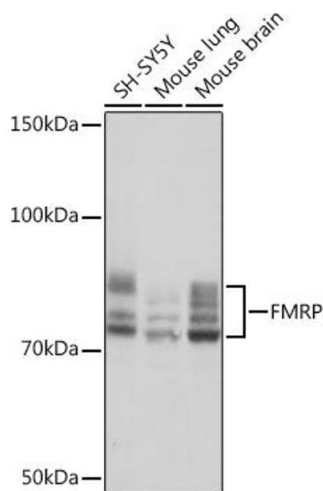
Storage: -20 °C

Storage Comment: Store at -20°C. Avoid freeze / thaw cycles.



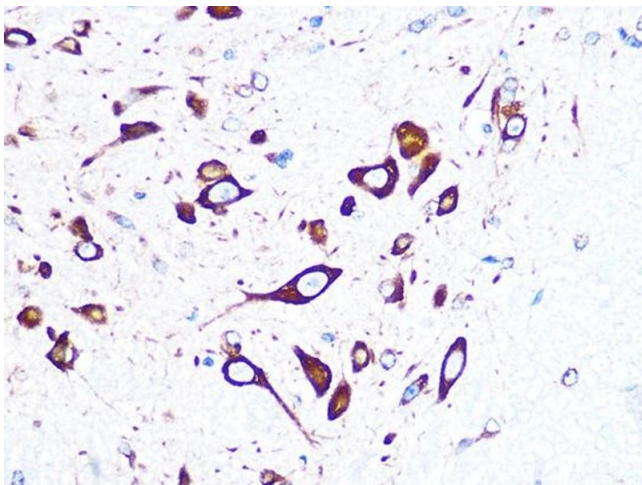
Immunohistochemistry

Image 1. Immunohistochemistry of paraffin-embedded rat testis using FMRP Rabbit mAb (ABIN1679778, ABIN3019025, ABIN3019026 and ABIN7101703) at dilution of 1:100 (40x lens). Perform microwave antigen retrieval with 10 mM PBS buffer pH 7.2 before commencing with IHC staining protocol.



Western Blotting

Image 2. Western blot analysis of extracts of various cell lines, using FMRP Rabbit mAb (ABIN1679778, ABIN3019025, ABIN3019026 and ABIN7101703) at 1:1000 dilution. Secondary antibody: HRP Goat Anti-Rabbit IgG (H+L) (ABIN1684268 and ABIN3020597) at 1:10000 dilution. Lysates/proteins: 25 µg per lane. Blocking buffer: 3 % nonfat dry milk in TBST. Detection: ECL Basic Kit (RM00020). Exposure time: 1s.



Immunohistochemistry

Image 3. Immunohistochemistry of paraffin-embedded mouse spinal cord using FMRP Rabbit mAb (ABIN1679778, ABIN3019025, ABIN3019026 and ABIN7101703) at dilution of 1:100 (40x lens). Perform microwave antigen retrieval with 10 mM PBS buffer pH 7.2 before commencing with IHC staining protocol.