



Datasheet for ABIN7101705  
**anti-PODXL antibody**



[Go to Product page](#)

2 Images

Overview

Quantity:	20 µL
Target:	PODXL
Reactivity:	Human
Host:	Rabbit
Clonality:	Monoclonal
Conjugate:	This PODXL antibody is un-conjugated
Application:	Western Blotting (WB), Immunohistochemistry (IHC)

Product Details

Immunogen:	A synthesized peptide derived from human PODXL
Isotype:	IgG
Cross-Reactivity:	Human
Characteristics:	Monoclonal Antibodies
Purification:	Affinity purification

Target Details

Target:	PODXL
Alternative Name:	PODXL ( <a href="#">PODXL Products</a> )
Background:	This gene encodes a member of the sialomucin protein family. The encoded protein was originally identified as an important component of glomerular podocytes. Podocytes are highly

## Target Details

---

differentiated epithelial cells with interdigitating foot processes covering the outer aspect of the glomerular basement membrane. Other biological activities of the encoded protein include: binding in a membrane protein complex with Na<sup>+</sup>/H<sup>+</sup> exchanger regulatory factor to intracellular cytoskeletal elements, playing a role in hematopoietic cell differentiation, and being expressed in vascular endothelium cells and binding to L-selectin. [provided by RefSeq, Jul 2008],Gp200, PC, PCLP, PCLP-1,Cancer,Cardiovascular,Cell Biology & Developmental Biology,Cytoskeleton,Extracellular Matrix,Hematopoietic Progenitors,Signal Transduction,Stem Cells,Tumor biomarkers,PODXL

---

Molecular Weight: 165 kDa

---

Gene ID: 5420

---

UniProt: [O00592](#)

---

Pathways: [Tube Formation](#)

## Application Details

---

---

Application Notes: WB,1:500 - 1:2000,IHC,1:50 - 1:200

---

Restrictions: For Research Use only

## Handling

---

---

Buffer: PBS with 0.02 % sodium azide,0.05 % BSA,50 % glycerol, pH 7.3.

---

Preservative: Sodium azide

---

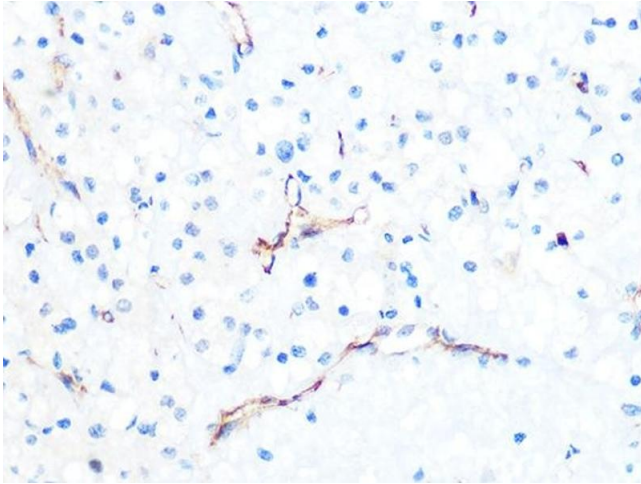
Precaution of Use: This product contains Sodium azide: a POISONOUS AND HAZARDOUS SUBSTANCE which should be handled by trained staff only.

---

Storage: -20 °C

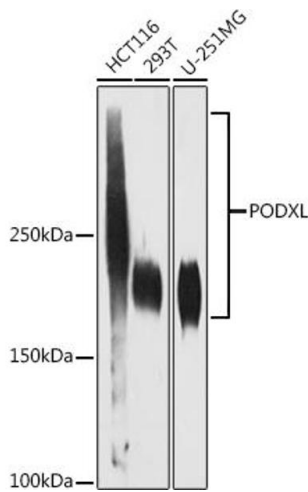
---

Storage Comment: Store at -20°C. Avoid freeze / thaw cycles.



### Immunohistochemistry

**Image 1.** Immunohistochemistry of paraffin-embedded human kidney cancer using PODXL Rabbit mAb (ABIN1678504, ABIN3019044, ABIN3019045 and ABIN7101705) at dilution of 1:100 (40x lens). Perform microwave antigen retrieval with 10 mM PBS buffer pH 7.2 before commencing with IHC staining protocol.



### Western Blotting

**Image 2.** Western blot analysis of extracts of various cell lines, using PODXL antibody (ABIN1678504, ABIN3019044, ABIN3019045 and ABIN7101705) at 1:1000 dilution. Secondary antibody: HRP Goat Anti-Rabbit IgG (H+L) (ABIN1684268 and ABIN3020597) at 1:10000 dilution. Lysates/proteins: 25 µg per lane. Blocking buffer: 3 % nonfat dry milk in TBST. Detection: ECL Enhanced Kit (RM00021). Exposure time: 180s.