



Datasheet for ABIN7101711
anti-TFF3 antibody



[Go to Product page](#)

2 Images

Overview

Quantity:	20 µL
Target:	TFF3
Reactivity:	Human
Host:	Rabbit
Clonality:	Monoclonal
Conjugate:	This TFF3 antibody is un-conjugated
Application:	Immunohistochemistry (IHC)

Product Details

Immunogen:	A synthesized peptide derived from human TFF3
Isotype:	IgG
Cross-Reactivity:	Human
Characteristics:	Monoclonal Antibodies
Purification:	Affinity purification

Target Details

Target:	TFF3
Alternative Name:	TFF3 (TFF3 Products)
Background:	Members of the trefoil family are characterized by having at least one copy of the trefoil motif, a 40-amino acid domain that contains three conserved disulfides. They are stable secretory

Target Details

proteins expressed in gastrointestinal mucosa. Their functions are not defined, but they may protect the mucosa from insults, stabilize the mucus layer and affect healing of the epithelium. This gene is expressed in goblet cells of the intestines and colon. This gene and two other related trefoil family member genes are found in a cluster on chromosome 21. [provided by RefSeq, Jul 2008],ITF, P1B, TFI,Cell Biology & Developmental Biology,Cytoskeleton,Extracellular Matrix,Signal Transduction,TFF3

Molecular Weight: 10 kDa

Gene ID: 7033

UniProt: [Q07654](#)

Application Details

Application Notes: IHC,1:50 - 1:200

Restrictions: For Research Use only

Handling

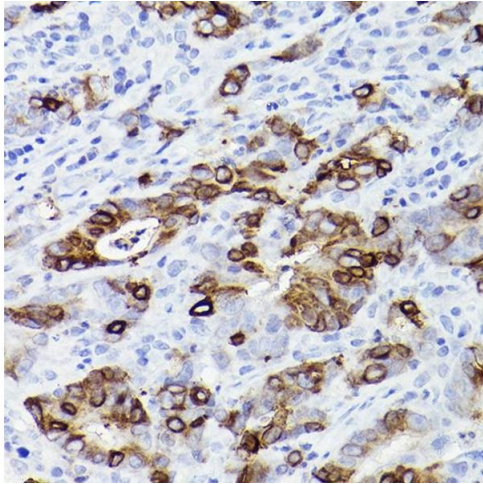
Buffer: PBS with 0.02 % sodium azide,0.05 % BSA,50 % glycerol, pH 7.3.

Preservative: Sodium azide

Precaution of Use: This product contains Sodium azide: a POISONOUS AND HAZARDOUS SUBSTANCE which should be handled by trained staff only.

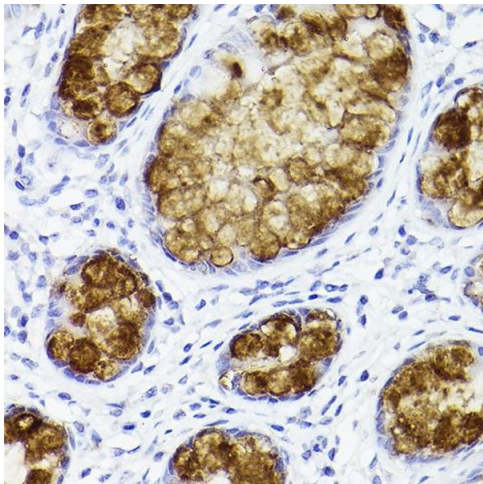
Storage: -20 °C

Storage Comment: Store at -20°C. Avoid freeze / thaw cycles.



Immunohistochemistry

Image 1. Immunohistochemistry of paraffin-embedded human colon carcinoma using TFF3 Rabbit mAb (ABIN1680916, ABIN3019077, ABIN3019078 and ABIN7101711) at dilution of 1:100 (40x lens). Perform high pressure antigen retrieval with 10 mM citrate buffer pH 6.0 before commencing with IHC staining protocol.



Immunohistochemistry

Image 2. Immunohistochemistry of paraffin-embedded human colon using TFF3 Rabbit mAb (ABIN1680916, ABIN3019077, ABIN3019078 and ABIN7101711) at dilution of 1:100 (40x lens). Perform high pressure antigen retrieval with 10 mM citrate buffer pH 6.0 before commencing with IHC staining protocol.